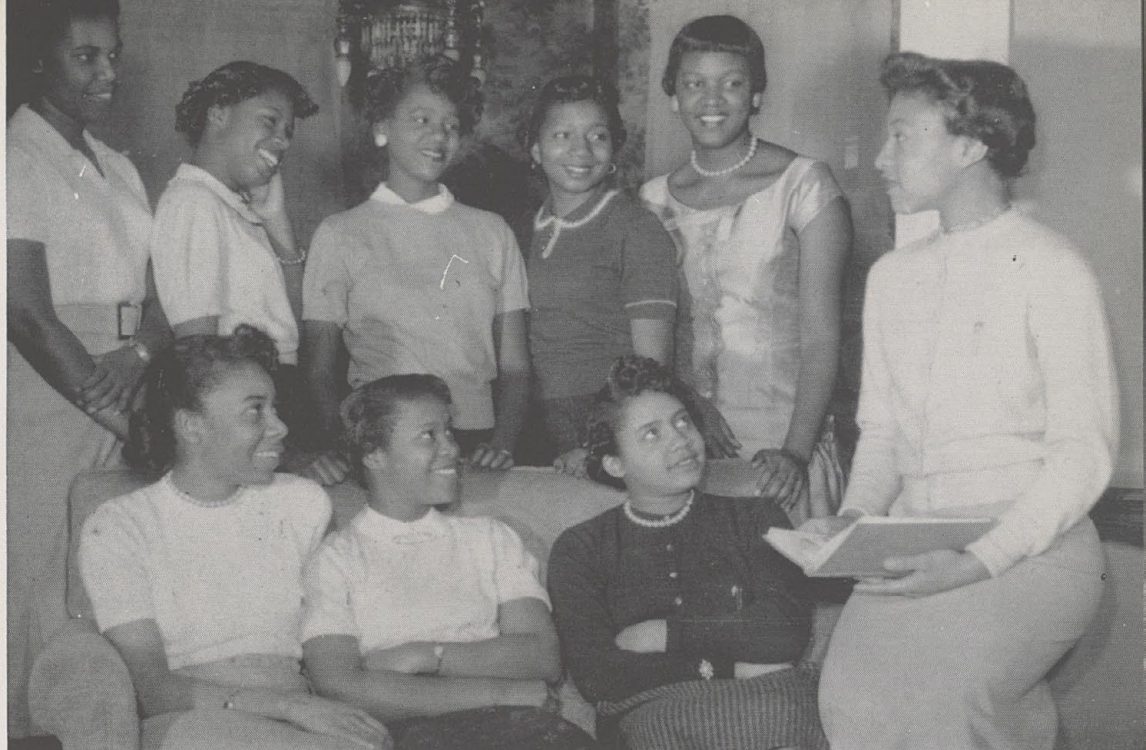


Alpha Beta Chi

First Row: Carolyn Felder (Treasurer), Priscilla Davis, Leatha Howard, Lavern Walker (President). Second Row: Ann Felder (Recording Secretary), Phyllis Williams, Marion Love, Delores Brown, Betty Freeman.



Alpha Beta Chi, created in May, 1951, was founded by a small group of girls at Withrow High School. Later girls from other schools sought membership and new chapters were formed.

A B O V E

The club is noted for its annual fashion show, a formal dance, and several charitable activities.

The purpose of the organization has been to create lasting friendships, to promote a well-rounded social life for all its members, and to encourage loyalty, faithfulness, and sincerity throughout the year.

Ivyette Sorority was founded by two members of Omicron and Sigma Omega Chapters of Alpha Kappa Sorority in the spring of 1945. The sorority's purpose is to encourage girls to plan for higher education and to help girls in leadership, development, and community participation.

B E L O W

Ivyettes is not a chapter sorority and is composed of 29 girls from Walnut Hills, Withrow, Taft, and Hughes.

These sorority sisters gave the annual Mr. and Miss Ivy Dance and also their annual talent show and dance. At Thanksgiving they took time to help a needy family.



Ivyettes

First Row: Liz Williams, Barbara Manifee, Noddie Felder (Treasurer). Second Row: Janie Woods (President), Penny White (Recording Secretary), Frances Van Dyke. Third Row: Charlotte Render (Vice-President), Patricia Wilkins (Business Manager), Roma Jean Scruggs, Thelma Vann, Joann Pakestian (Financial Secretary).