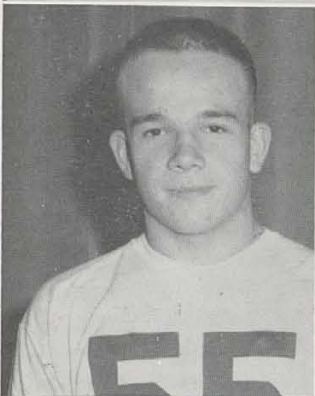
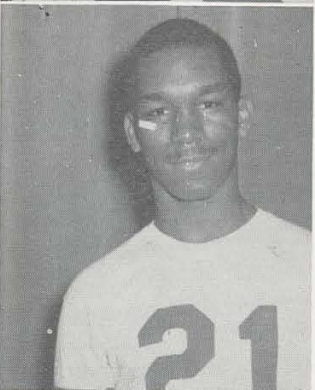


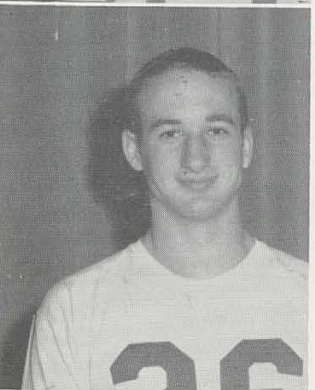
SCOTT TYLER



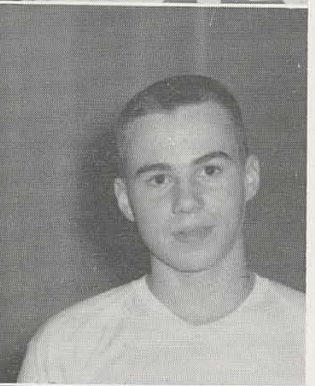
TIM FLEMING



ELLIOT WILLIAMS



TOM PARTHENIKIS



KEN PETERS



BOB BANES

## GRID SEASON MEDIOCRE, DUE TO BAD BREAKS, INEXPERIENCED PLAYERS

First Row, Left to Right: Adolphus Ward, Martin Tyler, Paul Burgess, Doug Copenhaver, Tim Fleming, Paul Fleming, George Siebert, Scott Tyler, Don Osswald. Second Row: Ron Bailey, Jesse Hodges, Larry Hughes, Charles Braddock, Elliot Williams, Charlie Neal, Chuck Kile, Bob Traber, Pete Georgetown. Third Row: Jack Williams, Mgr.; Tom Parthenikis, Lawyer Lawson, Jim Heidenright, Jeff Heinrich, Larry Walker, Bob Banes, Ken Peters, Jeff Hoskins, Bill Johnson, Mgr.

Heidenright Grabs the Pass.



The season started early for the Big Reds this year. The week after school started, Hughes was engaged in the 10th Annual Pigskin Preview. Once again, the teams were divided into the Rangers and the Raiders. In the first game, Hughes played Central, and fought a scoreless tie. The Big Red defense was much improved over previous years, and was led, in this contest by Larry and Walter Walker, and Howard Denham. The score of the second game was 0-0, as Hughes again showed fine defense against Walnut Hills.

In the first game of the season, Hughes fell way short of victory, 34-20, at the hands of Lima. The Big Reds were plagued with mistakes, and all breaks were to the advantage of Lima.

The mighty Roger Bacon team, subdued a determined Hughes team.

DOUG COPENHAVER

PAUL BURGESS

BOB TRABER

