

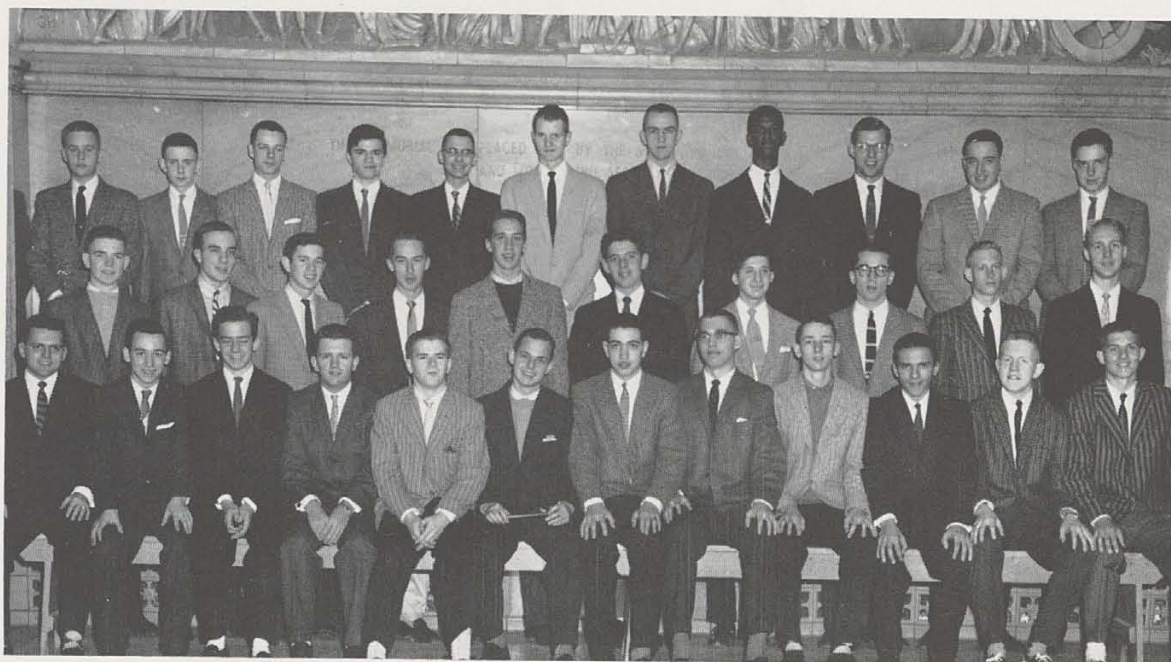


HUGHES CLUB

Gene Henn, Advisor, Ken Scheurer, and Tom Turner admire the athletic trophies in the Hughes Club case.

SENIORS

First Row, Left to Right: J. Compositor, R. Marion, E. Mullinger, B. Phillips, Corresponding Secretary; T. N. Turner, Vice-President; Gene Henn, President; W. Marshall, Corresponding Secretary; J. Morrison, Treasurer; P. Minges, Program Chairman; G. Mitchell, Sergeant at Arms; R. Yelton, C. Schneider. Second Row: R. Henke, K. Keller, L. Roseauere, A. Ruppner, D. Oswald, R. Schott, N. Confaxes, R. Finkemeier, W. Lower, P. Westermeyer. Third Row: R. Rampton, D. Evans, G. Welch, P. Ammons, W. Strawbridge, W. Clippard, S. Clarky, B. Camp, H. Noack, W. Kemner, W. Christman.



JUNIORS

First Row, Left to Right: E. Bergsmark, R. Kelly, J. Davis, D. Burke, D. Shepherd, J. Daken. Second Row: F. Loveland, E. Berghausen, R. Cameron, C. Williamson, R. Tarvin, E. Steinle. Third Row: T. Ertel, W. Gangloff, E. Weber, L. Rattliff, J. Davis, J. Siebel, R. Taylor.



Hughes Club was formed to establish throughout the school and community high standards of character for its members.

Each year, Hughes Club undertakes a project as a service to the school. Some samples of this action are the W.C.E.T. TV, a portable P.A. and the Trophy Case in the front hall. Each year Hughes Club undertakes its annual pilgrimage to Brown County, Indiana or General Butler State Park, Kentucky. Under the leadership of Kenneth L. Scheurer, this proved to be quite a trip. Funds are raised through the annual John-Alden-Priscilla Dance.