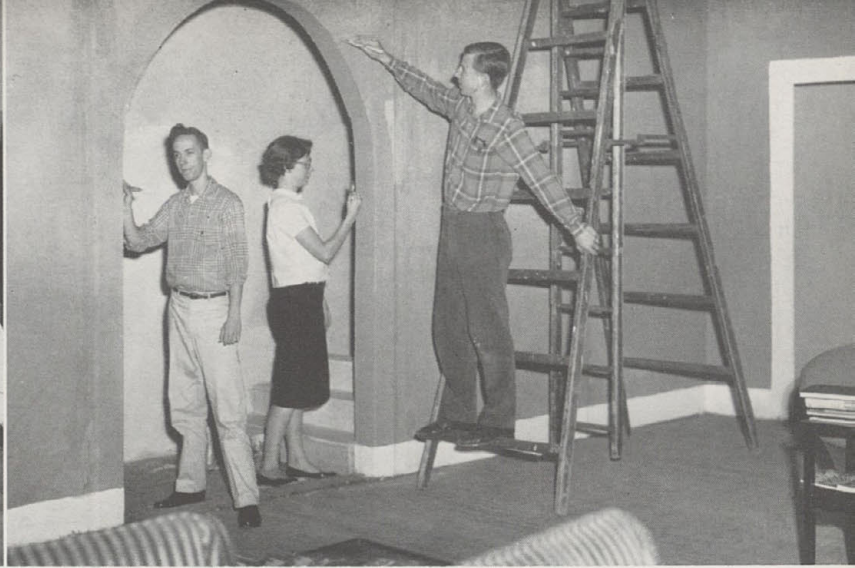




The art staff busies itself making designs to brighten up the pages of the '60 annual.



The play workers transform drab backdrops into convincing scenery for our many productions.

Art Beautifies Hughes

All the classes of art teachers Miss Frances Adomeit, Mrs. Josephine Deutsch and Miss Marcella Schroth combine to form the Art Department. This unit is invaluable in its help to the Music and Dramatic Departments. The art staff designs posters and programs for all the musical concerts given throughout the year. When the plays and the annual Merry-Go-Round are produced, the stage comes alive with the many realistic settings the ambitious students devise.

At Christmas time the art division decorates a large tree in the front hall. This year, for the very first time, the tree was an artificial one. It looked very modernistic in white, red and gold. The uniqueness of the design aroused much comment and enthusiasm among the student body. A picture of the tree may be seen on the opposite page.



The versatile art students lend their talents to the making of posters.

J. Sears, J. Chenault, J. Lawson, A. Patterson, P. Cox, R. Ponder, J. Heidenreich

