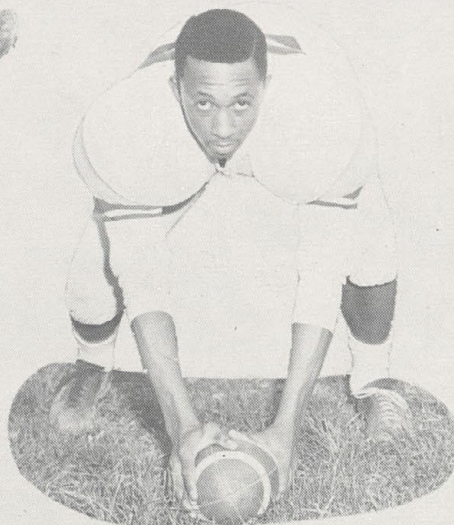
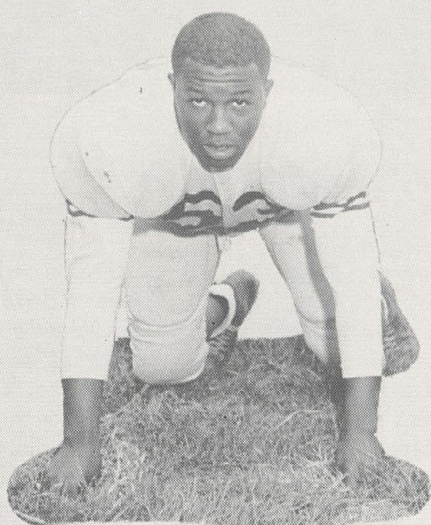


LARRY HUGHES
Back

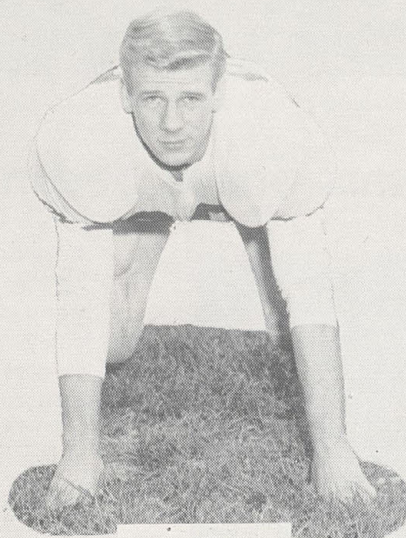
ALLEN STOKES
Center



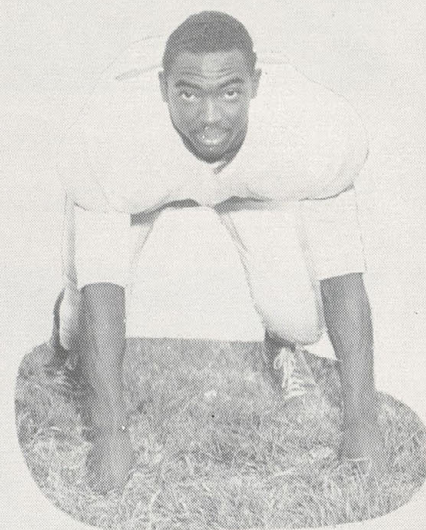
EARNEST KENNED
Back



WALTER WALKER
Guard

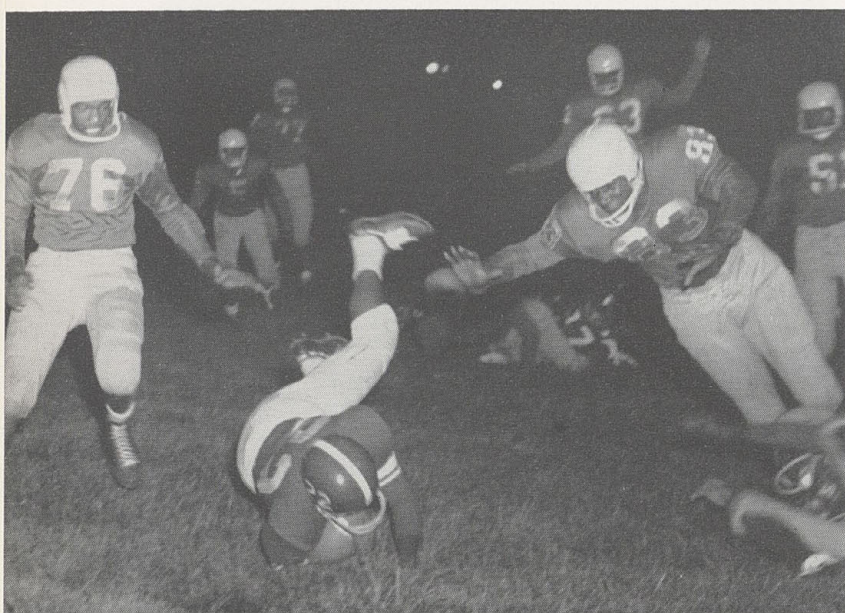


TOM STRUNK
Tackle



CHARLIE NEAL
Guard

Larry Hughes is tripped up in the Preview by a Taft tackler.



Allen Stokes, Don Gabel, and Harold Prather prevented any further Bulldog touchdowns. At the end of the game Hughes led the league with a 3-0 record.

Hughes, out to tame Western Hills' Mustangs, wound up on the short end of a 14-6 score. West Hi took the first kickoff and quickly scored. Behind 8-0, Hughes fought doggedly until late in the second quarter, when Bobby Williams intercepted a Mustang pass and ran 80 yards for the Big Reds' only score. The second half was highlighted by the work of the defensive units of both teams. In the waning moments, West Hi scored again to make the score 14-6. In a last-ditch attempt to score, Hughes tried a fake punt on fourth down, but failed and the Mustangs took over and "froze" the ball.

The Big Red suffered their second defeat from Walnut Hills. In the first quarter, Larry Parks sneaked over to score Hughes' only touchdown and the score at the half stood: Hughes, 6; Walnut Hills, 0. In the second half, the Eagles scored twice and won 16-6.