

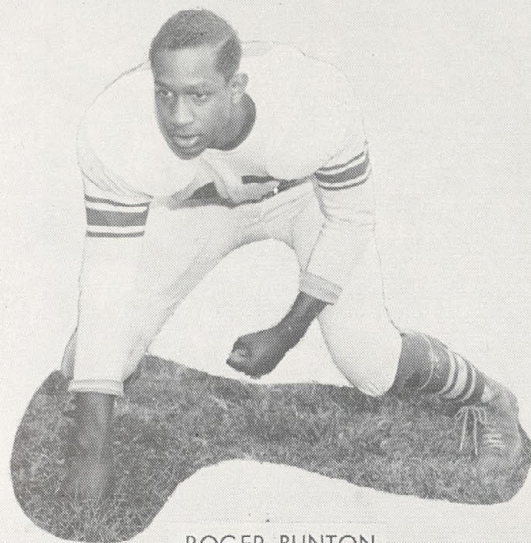
LARRY PARKS
Back



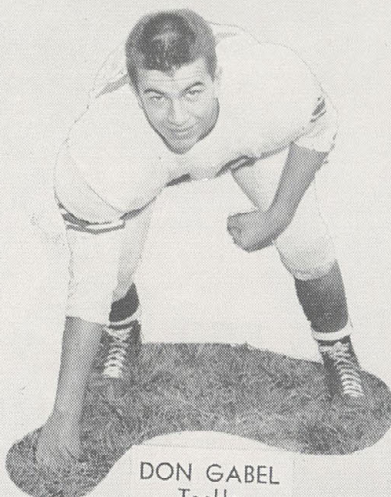
VIC MOORE
Back



BOBBY WILLIAMS
End



ROGER BUNTON
End



DON GABEL
Tackle



CLIFF BELL
Center

Charlie Neal clears the way as Don Hardy picks his way upfield through Mariemont territory.

Disgruntled, Hughes tangled with Mariemont, champions of the Eastern Hills League, in a non-league game. The only score made came when Larry Parks threw a touchdown pass to Roger Bunton. A short jump pass from Parks to Bobby Williams for the extra points was blocked. Hughes' defense was so potent that the Warriors never penetrated past Hughes' 25-yard line. This victory boosted the morale of the Big Reds for their last game.

Hughes' final encounter was with Taft. When the two teams met in 1958, Hughes was on top of the league and Taft was on the bottom. Hughes' over-confidence and Taft's determination combined to produce a most humiliating defeat for the Big Reds. This year Hughes was out for revenge. The Big Reds' deadly offense struck first with a pass from the unerring arm of Larry Parks into the hands of Roger Bunton. Hughes led at the half, 6-0. The Senators scored on a 16-yard jaunt in the second half but could not add the two extra points. The game ended in a stalemate, 6-6. As a result, Hughes finished the season tied with Taft for second place in the Public High School League.

