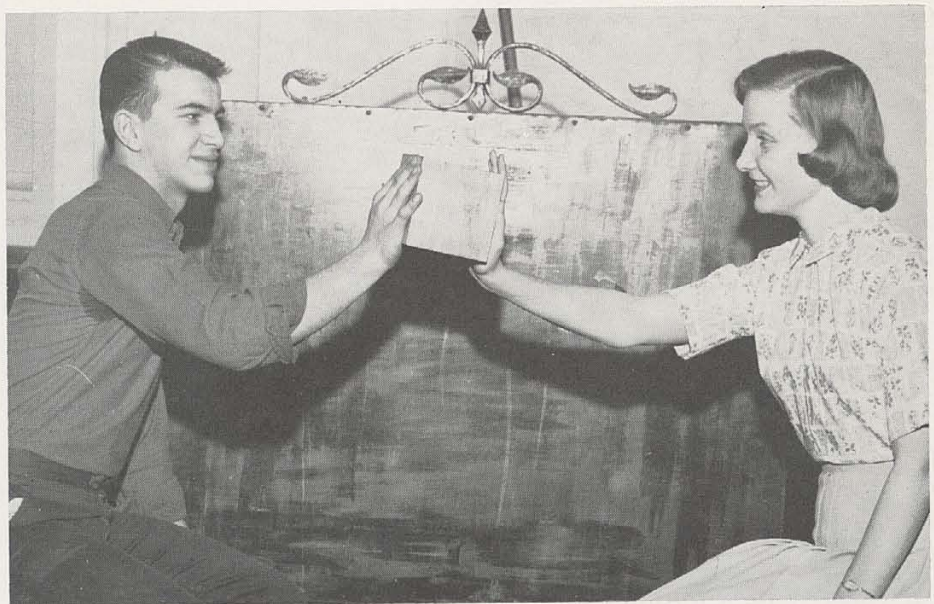




Best Looking: "Mirror, mirror in the hand, am I not grand?" says Jerry Ellis, assisted by Carolyn Cook.



Best All-Around: Don Gabel and Alice Heuck are no squares, but a little solid geometry never hurt anyone, even if it is a special type of polyhedron like a cube.



Friendliest: Look, Tom Caton and Donna Reaves, you two surely don't look very pleased for this ANNUAL picture!

Most Likely to Succeed: Climbing the ladder to success are Bob Beyer and Sandy Bereskin. Watch out for that last step!

Best Artists: Mary Jane Rietman and John Thompson are the two to keep the Little Red Schoolhouse that way, and they appear to be doing a good job.

