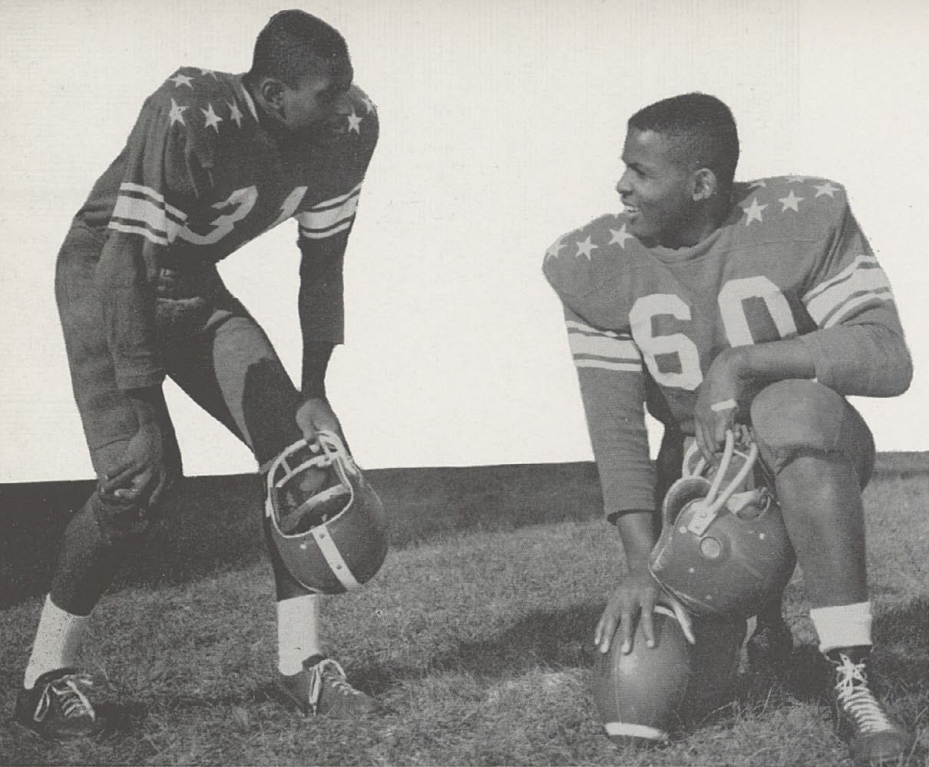
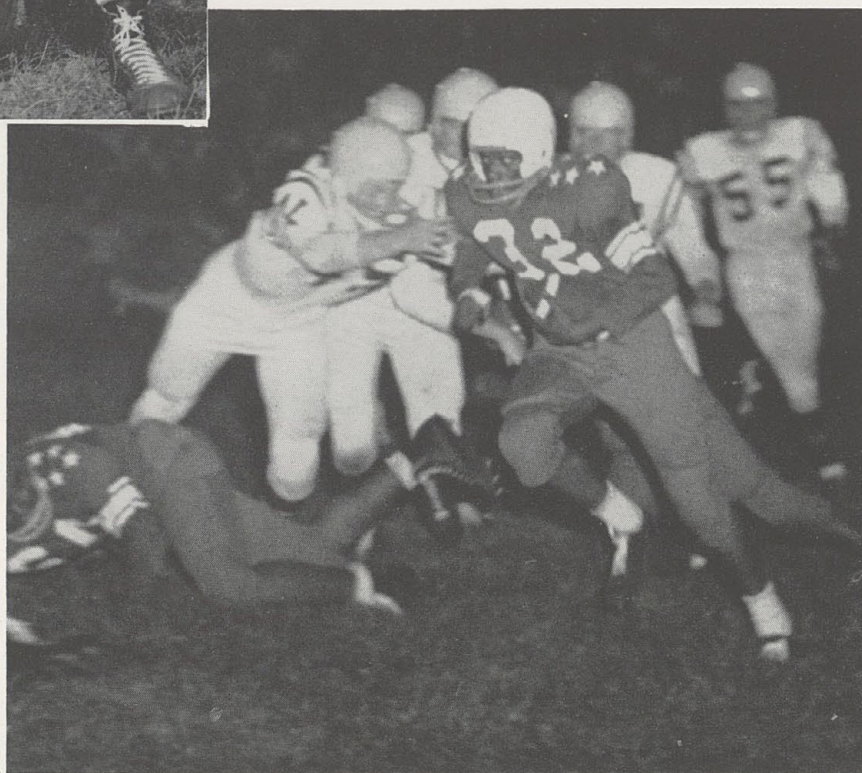


Season Closes with Big



Don Hardy and Darryl Allen—Football co-captains and only three-year lettermen.

Wayne Swanson (32) slashes his way through a stubborn Woodward line to gain additional yardage.



Before entering play, sophomore Ralph Grayson receives instructions from coaches.



In the season opener, the Hughes eleven met a rugged Hamilton Garfield football squad and were handed their first defeat, 19-0. Hamilton Garfield, rated as fourth in the state of Ohio, tallied three touchdowns while the Big Reds were held scoreless.

Hughes' first league tilt, against Western Hills, was highlighted by halfback Don Hardy's scoring three touchdowns, enabling the Big Reds to cop their first league victory 28-0. John Adkins scored early in the first quarter when he ran 16 yards around left end and across the goal-line. Later in the same quarter, halfback Don Hardy snagged a pass from John Cannedy in the end zone for the second touchdown. Dave Jordan provided the two extra points. In the second period, Hardy again scored by scampering 54 yards after intercepting a Mustang pass. One period later,