

Sophomore B

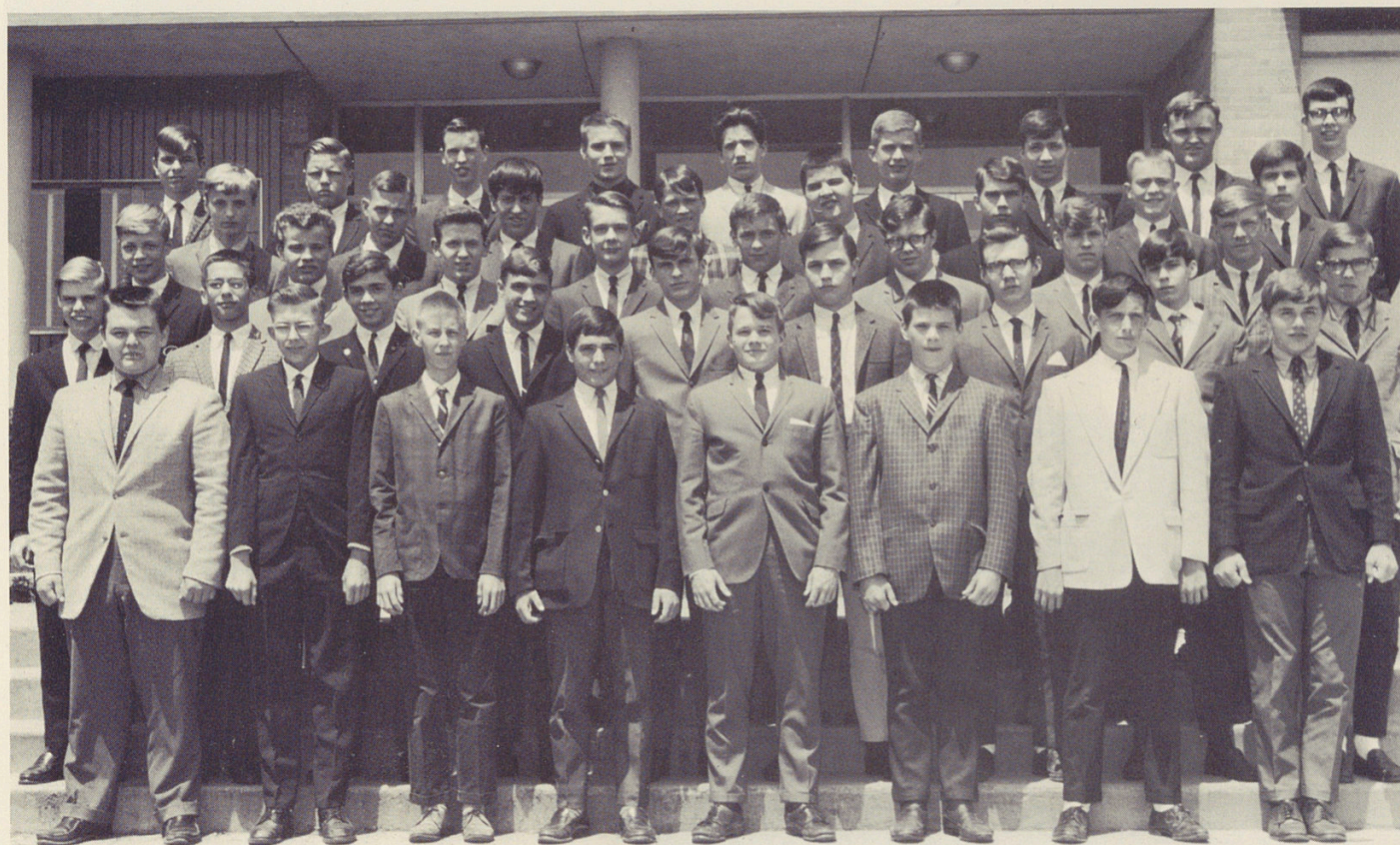
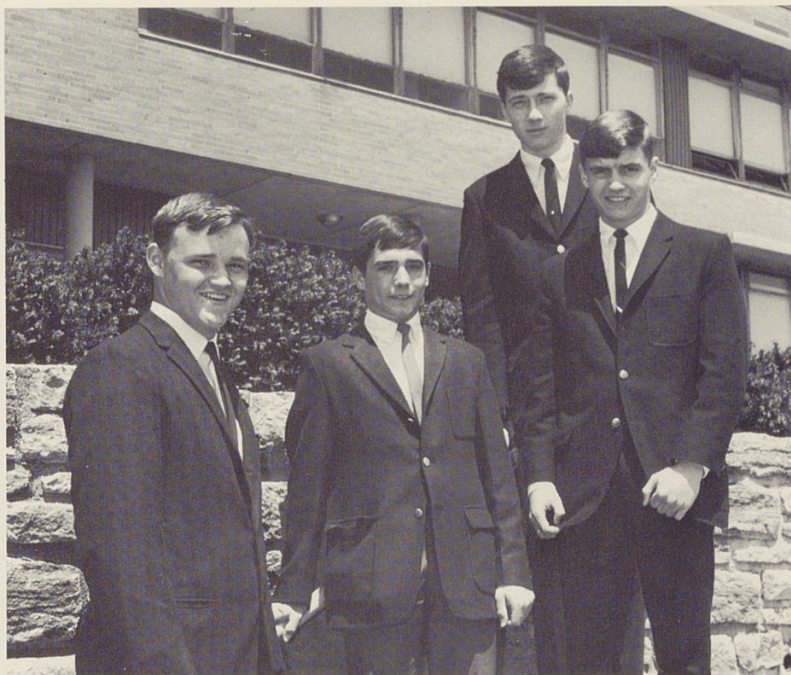
2B Officers

L. Erpenbeck--Secretary

W. Fleck--President

J. Halenkamp--Treasurer

M. Gehring--Vice-President



Left to Right--1st ROW: J. Hein, F. Gripshover, G. Foltz, W. Fleck, D. Gribben, D. Finke, L. Gilliam, J. Feighery. 2nd ROW: F. Henn, J. Dorger, D. Herrmann, M. Gehring, J. Featherstone, T. Gallenstein, J. Gronefeld, L. Fussinger, R. Gaines. 3rd ROW: J. Gantenberg, G. Gurren, J. Glenn, W. Ewald, M. Elsbernd, J. Foote, S. Gongola, M. Erion. 4th ROW: B. Haake, S. Heidrich, G. Hackman, J. Dickman, G. Epplen, N. Feldhues, D. Dickman, G. Faris. 5th ROW: J. Franxman, T. Greene, S. Fortner, T. Flanagan, L. Fischesser, R. Droege, J. Halenkamp, L. Erpenbeck, M. Durr