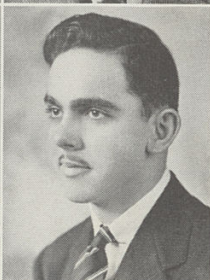


JOHN MILLER

Baseball 2, 3, 4.
Basketball 3.
Camera Club 2.
Cardinal Staff 4.
Class Play 2.
Class Pres. 1, 2.
Hi-Y Member 2.
Pres. of Hi-Y 4.
Vice-Pres. of Hi-Y 3.
Scholarship 1, 2, 4.

KENNETH MILLER

F. F. A. Member 2, 3.

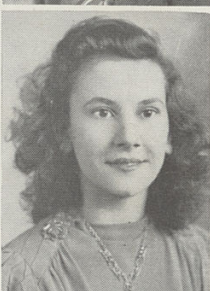
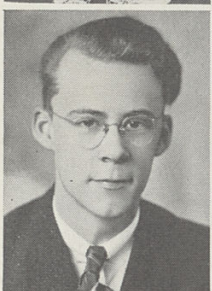


DOROTHY MOYER

County Chorus 1.
Band 1, 2, 3, 4.
Commedial Test 3.
Cardinal Staff 4.
Chorus 1, 2, 3.
Class Play 3.
Girl Reserve 4.
Orchestra 3.
Scholarship 1, 3.
Treas. of Class 3.
4-H Club 1, 2.

SAMUEL NEFF

Baseball 1, 2, 3.
Basketball 1, 2, 3, 4.
Chorus 1, 4.
Football 2.
Hi-Y Member 2.
Operetta 4.
Scholarship 3.

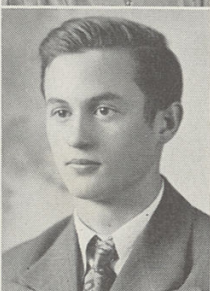
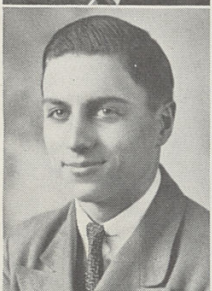


ROBERT PHILLABAUM

Band 1, 2, 3, 4.
Class Play 2.
Chorus 1, 2, 3, 4.
Hi-Y Member 3, 4.
Operetta 4.
Orchestra 4.
Scholarship 4.

MARY ELLEN ROCKEY

Band 1, 2, 3, 4.
Cardinal Staff 4.
Chorus 1, 2.
Class Play 2, 3.
County Band 1, 2, 4.
County Orchestra 1, 3.
Librarian 4.
Orchestra 1, 2, 3, 4.
Scholarship 1, 2, 3, 4.
4-H Club 1, 2, 3, 4.

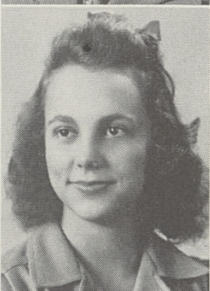
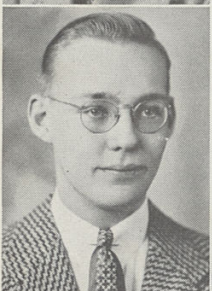


BILLY ROGERS

Agricultural Scholarship 4.
Band 1, 2, 3, 4.
County Band 2.
Dance Orchestra 2, 3.
F. F. A. Member 1, 2, 3, 4.
Treas. of F. F. A. 2.
Vice-Pres. of F. F. A.
Pres. of F. F. A. 4.
Hi-Y Member 2, 3, 4.
Operetta 1.
Scholarship 1.
4-H Club 1, 2, 3, 4.

BERL ROSE

F. F. A. Member 1, 2, 3.

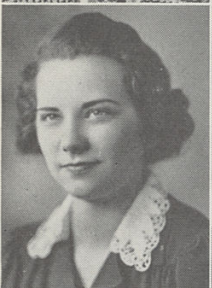


PHILLIP SCHAEFFER

Basketball 3, 4.
Camera Club 3, 4.
Treas. of Class 4.
Dance Orchestra 4.
Football 1, 2.
Hi-Y Member 4.
Scholarship 1, 2, 3, 4.

BETTY STEPHENSON

Commercial Contest 2, 3.
Band 1, 2, 3, 4.
Cardinal Staff 3, 4.
Cheer Leader 4.
Chorus 1, 2, 3, 4.
County Band 1, 2, 3, 4.
County Orchestra 1.
Girl Reserve Member 2, 3, 4.
County Chorus 1, 3.
Pres. of Girl Reserve 4.
Librarian 3.
Operetta 1, 2, 3, 4.
Orchestra 1, 2, 3, 4.
Scholarship 1, 2, 3.
4-H Club 1, 2, 3, 4.

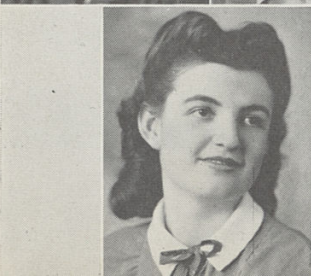


ROSEMARY STIVER

Cardinal Staff 4.
Girl Reserve 1, 4.
Librarian 4.
Orchestra 1.

MILDRED WINDHORST

Basketball 1, 2.
Cardinal Staff 4.
F. H. A. Member 1, 2.
Orchestra 1.



BESSIE WILLIS

Athletic Council 1.
Basketball 1, 2.
Cardinal Staff 4.
Chorus 1, 2.
Orchestra 1.

DOROTHY TURNER

(Not Pictured)
Art and Handy Crafts Club 2, 3.
Cardinal Staff 4.
Chorus 2.
Dramatic Club 3, 4.
Sewing Club 1.
F. F. A. Member 2, 3.