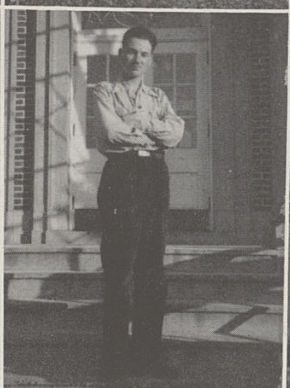
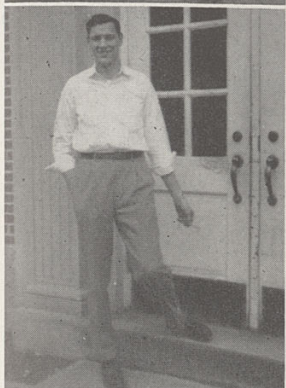
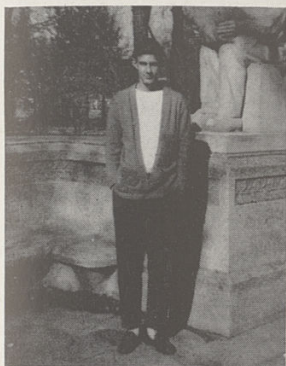


NAME	Elmer Simons	Bruce Swanson	Anita Thomas	Betty Thomas
LIKES	baby food	California	characters	to sleep
DISLIKES	work	gabby girls	choir practice	social snipers
ASSET	humor	silence	big brown eyes	perseverance
USUALLY SEEN	cracking jokes	Krogers	at the box office	editing
AMBITION	own a race horse	be a Navy officer	be a matron	have M.D. after Thomas



NAME	Fred Tull	Paul Turpin	Gerald Whitney	Joan Wiener
LIKES	study halls	leave school at 3:18	music	cameras
DISLIKES	school	to talk	school	two-timing boys
ASSET	shyness	mustache	trombone	innocent look
USUALLY SEEN	telling tall tales	in his Studebaker	driving his sister's car	playing cards
AMBITION	to graduate	to train pigeons	lead a band	ride in a convertible