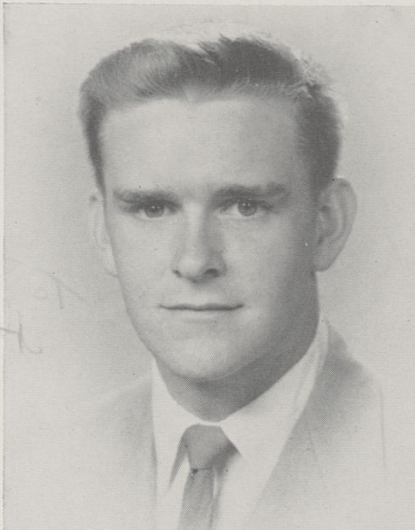


SENIORS

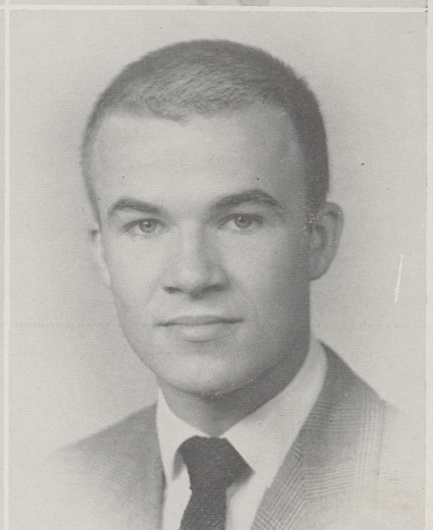
WILLIAM FORREST ANSELL

Transferred from Richmond 2; Track 2, 3, 4; Football 3, 4; Hi-Y 3, 4, Pres. 4; Masque and Mantle Sec'y 4; Vice-Pres. of Senior Class; Christmas Play 4; Variety Show 2, 3, 4; National Thespian 4; Senior Play.



SHIRLEY MAE ALLEE

G.A.A. 1, 2, 3, 4; M-Teens 1, 2, 3; Freshman Home Ec. Club; Senior Home Ec. Club 3, 4; Majorette 4; Masque and Mantle 4.

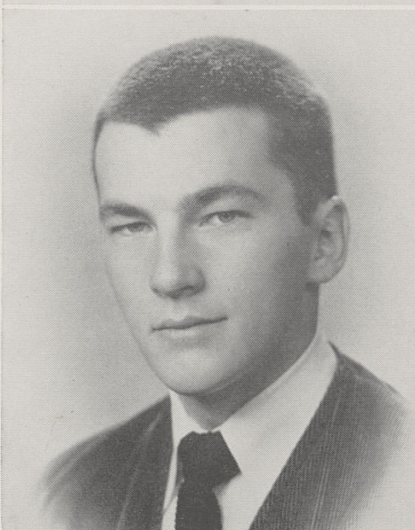


MARY MAXINE AMBURGEY

Freshman Home Ec. Club; Senior Home Ec. Club; Masque and Mantle 4.

JAMES EDWARD BRADY

Football 1, 2, 3, 4, Co-Captain 4; Basketball 1, 2, 3; Baseball 1, 2, 3, 4; Hi-Y 2, 3, 4; Variety Show 4.



GENE ROBERT CAIN

Hi-Y 2, 3, 4, Treas. 3; J.C.L. 3, 4; Masque and Mantle 4; War Path 3; Student Council 3; Annual Staff, Bus. Mgr. 4.

LYNNE JEAN APPLEGATE

G.A.A. 1, 2, 3, 4, Sec'y 3, Vice Pres. 4; M-Teens 1, 2, 3, 4; Masque and Mantle 4; War Path 2, 3, 4, Asst. Editor 4; Cheerleader 3, 4; Christmas Play 4; Variety Show 3, 4; Senior Play.

Best of luck to a swell guy
Jim Brady

Best of luck to a fine lady
Lynne