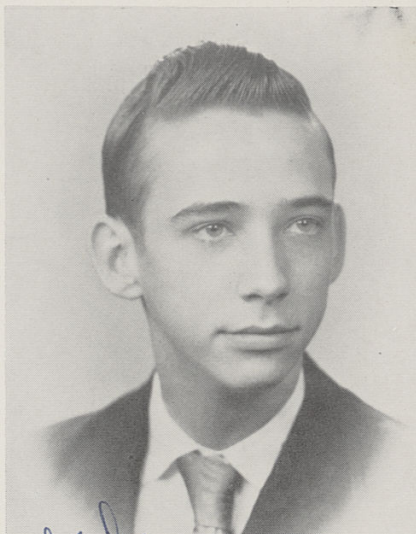


SENIORS

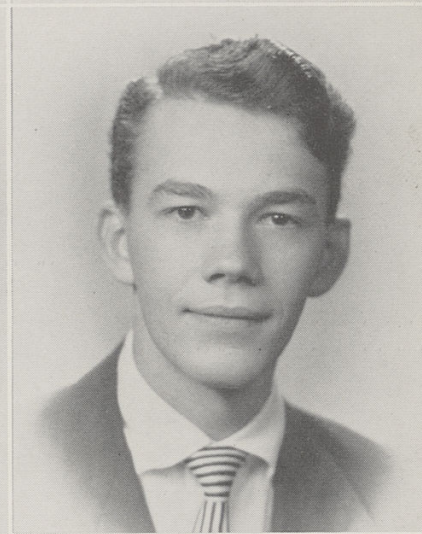
PAUL L. HOULLION

Transferred from Purcell 4; Masque and Mantle 4.



NANCY LOU GILMAN

G.A.A. 1, 2, 3, 4; M-Teens 1; Freshman Home Ec. Club; Student Council 2, 3, 4; Chorus 2, 3, 4; War Path 3; Band 1, 2, 3, 4, Pres. 4; Masque and Mantle 4; Variety Show 2, 3.



JENNIFER HAENSSEL

Transferred from St. Louis, Mo., 3; Senior Home Ec. Club 3; M-Teens 3, 4; G.A.A. 3; Masque and Mantle 4; Variety Show 4; Senior Play.

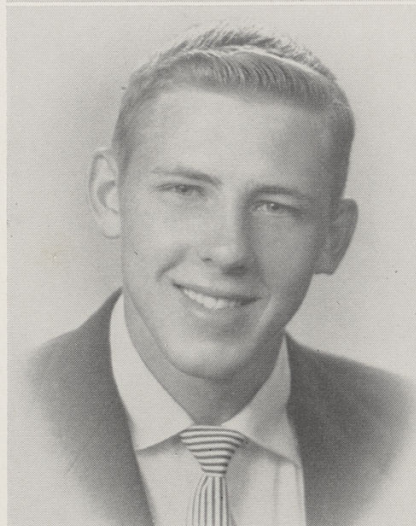
KENNETH JOHNS

Band 1, 2, 3, 4; Drum Major 1, 2, 3, 4; Variety Show 1, 4; Masque and Mantle 4; Designed Mariemont "T" Shirts; Stage sets for operettas.

*To Bill -
my friend
always
Sandy*

JOHN RODNEY JONAS

Football 1, 2, 3, 4; Basketball 1, 2, 3, 4, Capt. 2, Co-Capt. 4; Baseball 1, 2, 3, 4; Intramural Sports 1; Pres. of Sophomore Class; Hi-Y 2, 3, 4; Junior Class Play; Masque and Mantle 4; National Thespian 3, 4; Variety Show 4.



CAROL ANN HAYDEN

M-Teens 1, 2, 3, 4; Variety Show 3; Chorus 3; Senior Home Ec. Club 4.