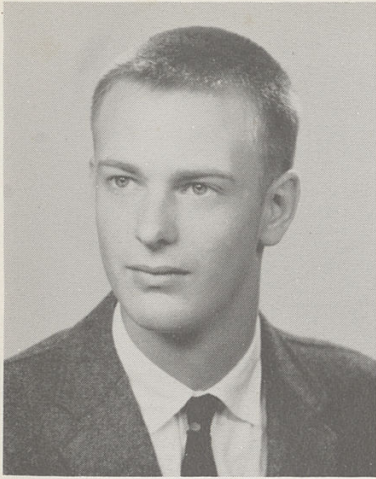


CARL A. LINDELL

Happy

Var. Show 2, 3;
Latin Club 2; Class V.
Pres. 3; Jr. Play Cast;
Sch. Team 2, 3; In-
tramurals 1; Key Club
1, 2, 3; Basketball 2,
3; Baseball '3.



Tops!

GAA 1; Var. Show
1; JCL 4; Latin Club
1, 2, 3; Class Pres. 3;
Stu. Coun. 2, 3; Ter-
race Parker 2; Bulldog
1; Jr. Play Cast; Sch.
Team 1, 2, 3; Canteen
2; Safety Coun. 2; Key
Club 1, 2, 3; Nat. Hon.
Soc. 3, 4.

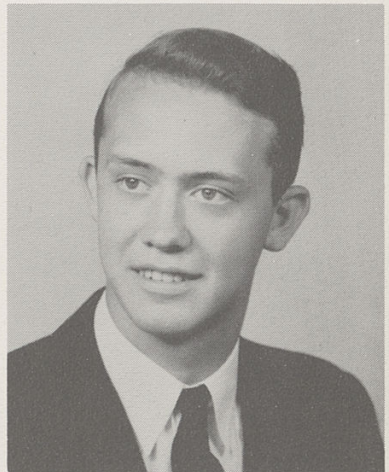
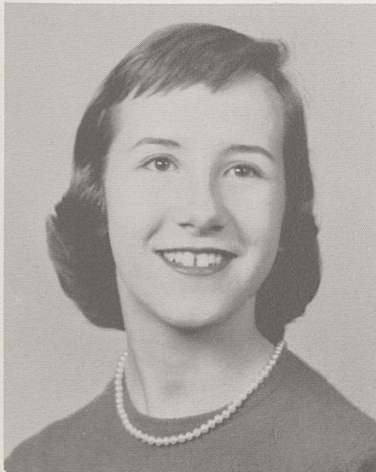
PHOEBE A. LLOYD



CAROL LEE McCOLLUM

Candy

GAA 1, 2, 3, 4; M-
Teens 1, 2, 3, 4; Var.
Show 2, 3; Nat. Thes.
3, 4; Nat. Hon. Soc. 3,
4; Stu. Coun. 4; Chief-
tain 1, Ed.-in-Chief 4;
Warpath 1, Art Ed. 2,
3; Jr. Play Stu. Dir.;
Sr. Play Prod.; Canteen
1, Sec. 2, Co-Pres. 3;
Assembly Com. 2; Pep
Club 2, 3, 4; Girl's
State Governor; Girl's
Nation 3; Cheerleader
2, 3, 4.



Chuck

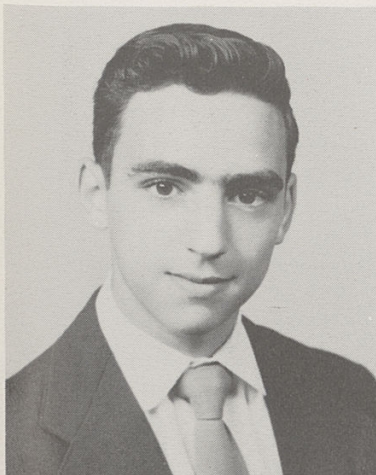
Intramural's Scoring
2, 3.

CHARLES W. LOVINS

JOHN LEE MARTINA

Jay

Sci. Club 1; Band 1;
Intramurals 1, 2, 4;
Library 1; Jr. Achieve.
3, 4.



Jay, Chuck, Candy, Happy, and Phoebe