

BRENDA KAY WARTHEN

Happy-go-lucky.

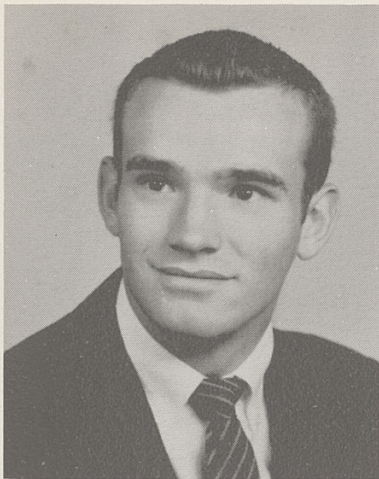
FTA 2, Treas 3, Pres. 4; GAA 1, 2, 3, 4; M-Teens 1, 2, 3, Class Rep. 4; Sci. Club 4; Nat. Thes. 3, 4; World Aff. 2, 3, V. Pres. 4; Home Ec. Club 4, Pub. 3; Chieftain; Warpath 4; Jr. and Sr. Play Prod.; Sch. Team 1; Canteen 2, 3, 4; Pep Club 3, 4.



"Woolsey"

Var. Show 1, 2, 3, 4; Hi Y 2, 3, 4; Canteen 1, 2, 3, 4; Football 3, 4; Basketball 1, 2, 3; Track 1, 2, 3, 4.

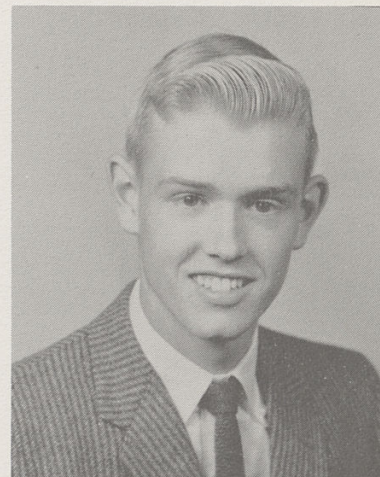
DALE WOOSLEY



WALTER W. WYATT

Say "cheese".

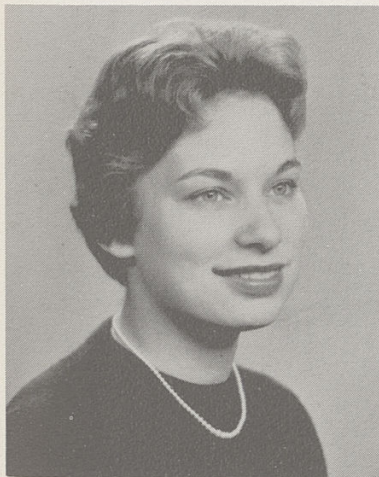
Sci. Club 3, 4; Hi Y 2, 3, 4; Band 1, 2; Stu. Coun. 3; Chieftain Photographer; Warpath 3; Jr. Play Cast; Sr. Play Prod.; Intramurals 2, 3; Canteen 1, 2, 3, Treas. 4; Track 3, 4; Tennis 1; Var. Show 3.



Heart-breaker.

GAA 1, 2, 3, 4; M-Teens 1, 2, 4; Sec. 3; Var. Show 3; Nat. Thes. 3, 4; FTA 4; Class Sec. 1; Stu. Coun. Sec. 3, 4; Chieftain 4; Warpath 1, 2, 3, 4; Breakfast Club 4; Jr. Play Cast; Sr. Play Prod.; Canteen 1, 2, 3, 4; Off. Staff 3; Pep Club 2, 3, Co-Pres. 4.

SANDRA ANN WISE



Wally, Sandy, Brenda; and Dale