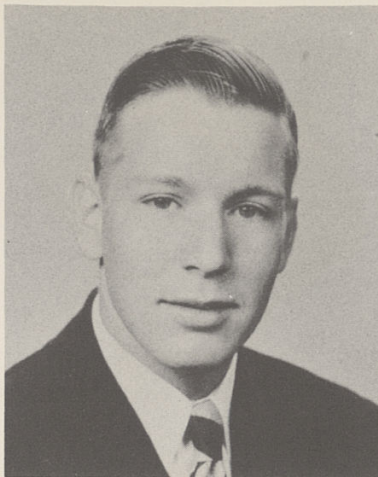




**CHARLENE NUGENT**

*"I shall laugh myself to death."*

M-Teens 1, 2, 3, G.A.A. 1, 2, Home Ec. Club 3, 4, Chorus 1, 2, 3, 4, Junior Play Production, Senior Play Usher.



**WILLIAM C. OSSWALD**

*"His mental ability matches his physical ability."*

Baseball 1, 2, 3, 4, Football 1, 2, 3, 4, Co-Captain 4, Intramurals 1, 2, 3, 4, Boys State 3, National Honor Society 3, War Path 4, Science Club 4.



**THEARD PARSONS**

*"His was not a forceful way but he had a gentle smile and a kindly word to say."*

Science Club 4.



**ETHEL MARY PAYNE**

*"Her ways are ways of pleasantness, and all her paths are peace."*

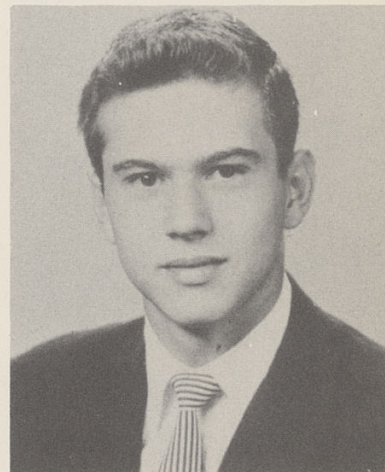
M-Teens 2, 3, G.A.A. 2, 3, National Thespian 4, Student Council 1, 2, 3, 4, President 4, Home Ec. Club 4, Variety Show 1, Junior Play Production Cast, Senior Play Prompter, Annual Staff 4, Chorus 1, 4.



**MARCIA PICKENS**

*"She that was ever fair and never proud, had tongue at will, and yet was never loud."*

M-Teens 1, 2, 3, 4, G.A.A. 1, 2, 3, 4, National Thespian 3, 4, Treasurer 4, Home Ec. Club 2, Variety Show 3, 4, Junior Play Cast, Senior Play Makeup Annual Staff 4, War Path 4, Science Club 4.



**LLOYD JAMES POLLOCK**

*"Oh what may a man within him hide, Though angel on the outward side."*

Football 1, 2, 3, 4, Track 1, 2, 3, 4, Hi-Y 2, 3, 4, Science Club 4, Band 1, 2, Intramurals 1, 2, Senior Play Stage Crew.