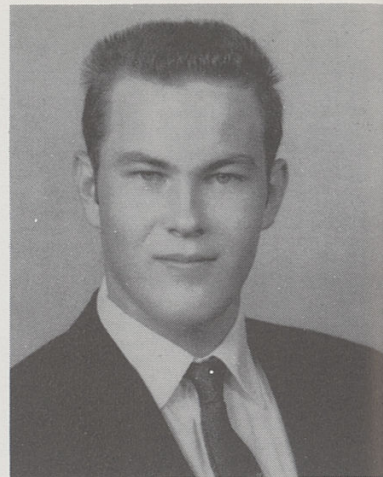


**MARIEANNE
CAROSELLI**
"A woman is always
changeable and
capricious."

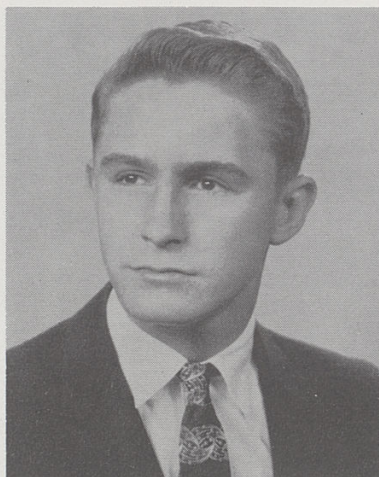
GAA 1, 2, 3, 4;
Pep Club 1, 2, 3, 4;
Var. Show 1, 2, 4;
M-Teens 1, 2, 3; War-
path 3, 4; Chieftain
4; Canteen 1, 2, 3,
4; Office Staff 3; Li-
brary Staff 4; Pom-
Pom Corps 3, Co-
Capt. 4; Times-Star
Reporter 3; Enquirer
Reporter 4; Nat. Thes.
4; Jr. Play Prod.; Sr.
Play Prod.; JCL 2.

WILLIAM BARRERE
"Patience is the door
of joy."



**WILLIAM CARSON
BURCHETT**

"What force cannot
do, ingenuity can."
Intramural Basket-
ball 1, 2, 3, 4; Base-
ball 1.



**JEANNE CARYL
CONDIT**

"Every cloud has a
silver lining."

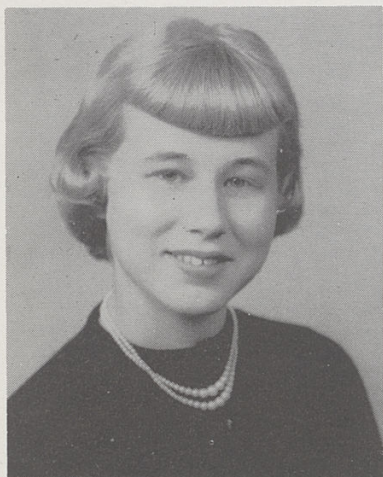
GAA 1, 2, 3, 4;
Cheerleading 2, 3,
Captain 4; Pep Club
2, 3; Co-Pres. 4; M-
Teens 1, 3; Jr. Play
Prod.; Canteen 1, 2,
4; Home Ec. Club 4;
Warpath 4; Chorus
1, 3, 4; Breakfast
Club 4; Var. Show 2,
3, 4; Office Staff 3;
Officers' Club 4; Li-
brary Staff 1; JCL 2.



**SANDRA ANN
CONING**

"All truths are not
to be told."

GAA 1; M-Teens 1,
3; Jr. Play Prod.; Sr.
Play Prod.; Pep Club
2, 4; Home Ec. Club
4; Canteen 1, 2, 4;
Library Staff 2; JCL
2; Warpath 4.



**EDWARD LEE
BURDELL**

"Fools rush in where
angels fear to tread."

Transferred from
Withrow 1; Band 1,
2, 3; Current Affairs
1, 2; Hi-Y 2, 3; JCL
1, 2; Chorus 2, 3, 4;
Var. Show 2, 3, 4;
Nat. Thes. 4; Jr. Play
Cast; Sr. Play Cast;
Breakfast Club 2, 3,
4; Warpath 4; Intra-
murals 1, 3, 4; Base-
ball 1, 2; Basketball
2; Chieftain 4; Can-
teen 2, 3, 4.

