

**ADELAIDE MARIE
KERR**

"Confidence of success is almost success."

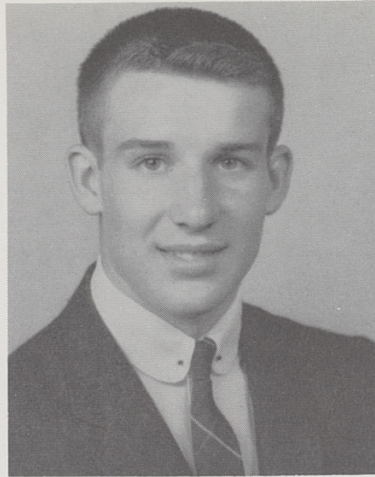
GAA 1, 2; Home Ec. Club 1, 4; Office Staff 3, 4; FBLA, V. Pres. 4; Sec. to Mr. Ernesting 3; Chorus 1.



**DONALD EDWIN
HUGHES**

"Duty before pleasure."

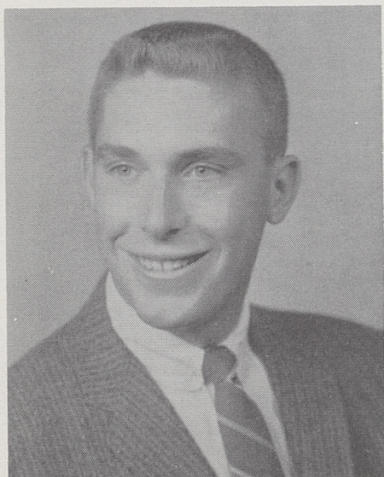
Class Sec. 1; JCL 2; Sr. Play Cast; Var. Show 4; Canteen 1, 2, 3, 4; Hi-Y 2, 3, Sec. 4; Track 1, 2, 3, 4; Basketball 1, 2, 3, 4.



JOHN P. HUHEEY

"The world is his, who enjoys it."

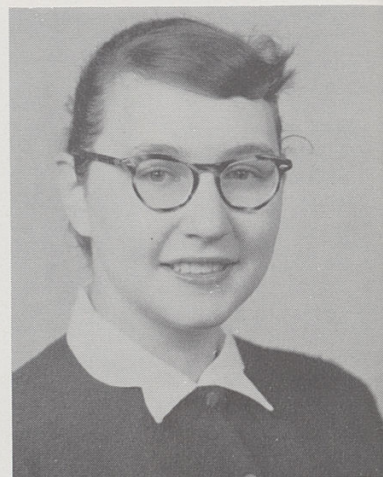
Football 1, 2, 3; Basketball 1, 2, 3, 4; Golf 1, 2, 3, 4; Hi-Y 2, 3, 4; Jr. Play Cast; Canteen 1, 2, 3, 4; Pep Club 4; Nat. Thes. 4; Intramurals 1; Var. Show 2, 3, 4.



**DORIS EVERHART
KIRBY**

"A mathematician has reached the highest rung on the ladder of human thought."

GAA 1, 2; FTA 2; Nat. Thes., Treas. 4; Jr. Play Cast; Sr. Play Cast; Latin Club 2; Scholarship Team 1, 2, 3; Office Staff 3; Nat. Hon. Soc. 4; Bulldog 2.



**JUDY CAROLINE
LANCE**

"Look to the rainbow."

Chorus 1, 2, 3, 4; GAA 1, 2, 3, 4; Var. Show 1, 2, 3, 4; Canteen 1, 2; Breakfast Club 2, 3; Pres. 4; Pep Club 2; JCL 2; Jr. Play Cast; Sr. Play Cast; Chieftain 4; Nat. Thes. 4; Officers' Club 4; Science Club 4; Scholarship Team 2, 3, 4; Girls' State 4; Hi-Fi Dels, V. Pres. 3; Nat. Hon. Soc. 3, 4.



**DALLAS McCLURE
HUSSEY**

"I was grateful to be able to answer promptly, and I did. I said I don't know."

Var. Show 1, 2, 3, 4; Band 1, 2, 3, 4; Latin Club 2; Breakfast Club 3, 4; Jr. Play Prod.; Sr. Play Cast; Nat. Thes. 4; Chorus 1, 2, 3, 4.

