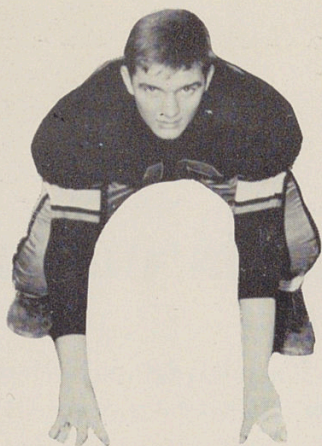


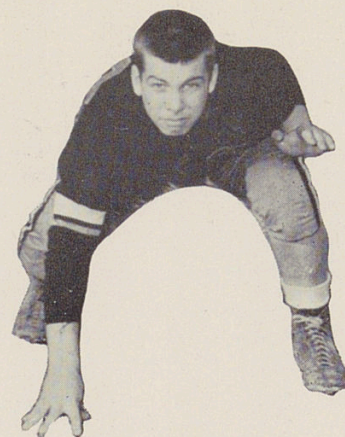
BENNY DUNCAN



BILL EDWARDS



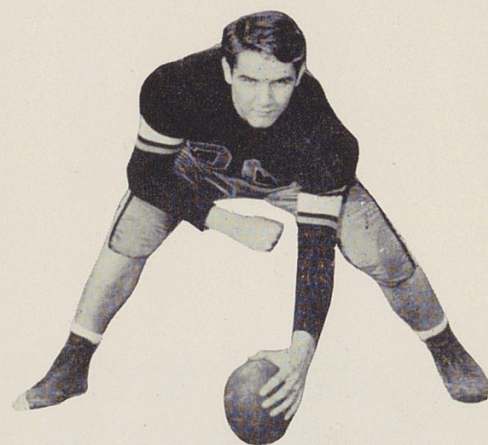
DON MACHEN



JOHN BAUMES

reach athletic peak ●

for the tiger eleven. Harry Andreadis, H. B. A tricky runner and a great defensive man. Carl Eschenback, T. battling blocker and a demon on defense, man who also made the all city team. Dick Boyle, T. A fast line-man, fine blocker and fighting tackler. Lowell Lumley, G. Honorary Captain, always the tiger's claw in the varsity's offense and defense. Eddie Grove, T. A line-man who was a lion on the defense. Floyd Jordan, E. A grid iron man who is unexcelled in effort or ability. Willard Van Epps, H. B. A back who sidelined for part of the season, who came back later to aid the varsity toward victory. Jim Thorpe, H. B. A fleet-footed half back who ran wild in the Central game to run up the score.



PAUL MAGILL

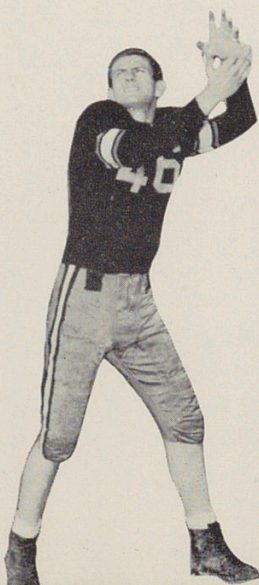
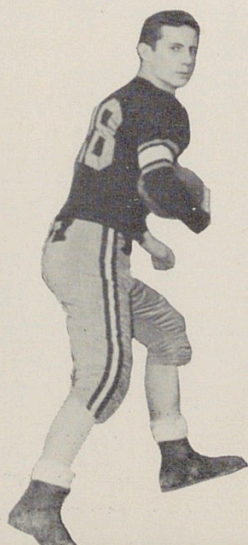
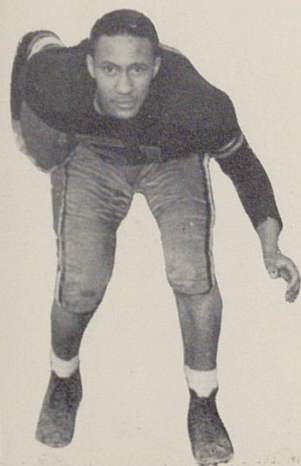


LEONARD BERNARD

JIM THORPE

WILLIE VAN EPPS

FLOYD JORDAN



DICK MITCHELL



CLYDE TIDWELL

