

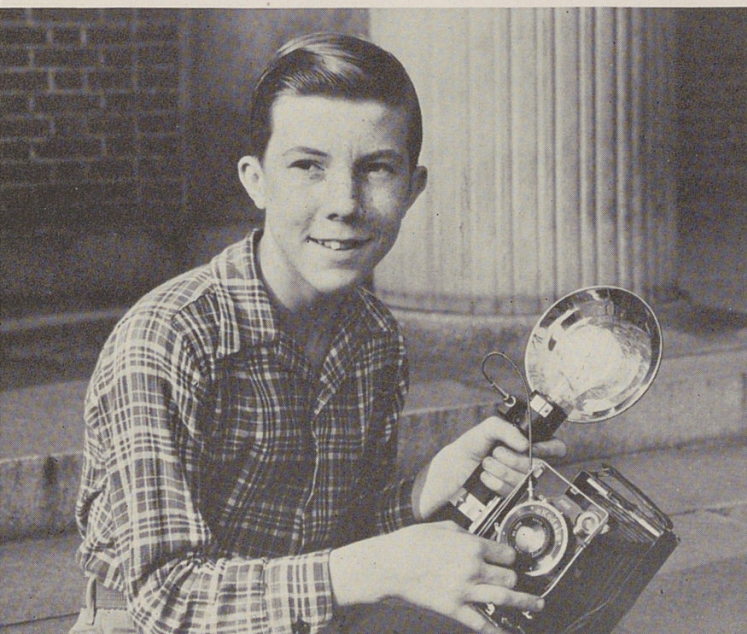
DIMENSIONS, LAYOUTS, AND SCHEDULES--ALL ARE ENDLESS TASKS OF THE ART STAFF

The Art Staff of Withrow is the planner of the Withrow Annual. Supervising picture schedules, making the "dummies," and pasting up layouts are some of the never-ending worries of the Art Staff. Under the guidance of Miss Green the staff is kept busy every night after school. Precision is a "must" for these

workers. The preparation of the Annual has taken not only time and energy, but also an abundance of skillful, competent workers headed by Ken Umbach and Joe Frattallone, art co-editors. The tireless effort, the cooperation of everyone, and the exceptional ability make this staff unsurpassable.



FIRST ROW: D. Lessel, M. Humphreys, S. Hermetet, B. Rahe. SECOND ROW: J. Deffren, V. Bain, P. Finn, J. Poulous. AROUND TABLE: F. Gates, C. Stricker, C. House, Miss Green, T. Jacobs.



Roger Burdorf is the Withrow boy who snaps the shutter as student photographer for the Annual. Since he is employed in a camera shop, this freshman is well qualified to take pictures of our current events.

R. Burdorf