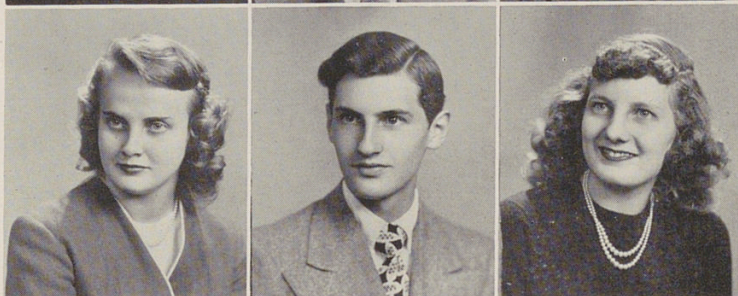


BARRE, JUNE, "Runt"  
Alpha Y 2; Beta Chi 4.

BATSAKES, GEORGE  
Gens Togata 2, 3; Track 1, 2, 3, 4; Lunchroom 2, 3, 4.

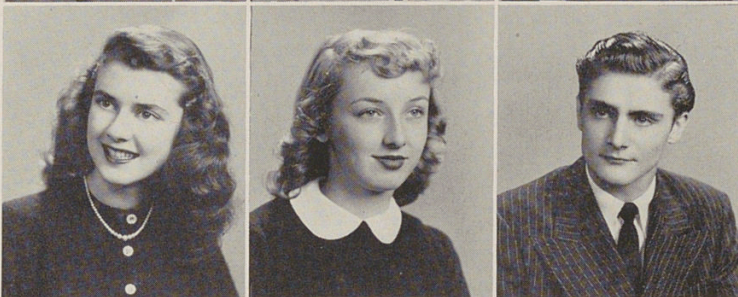
BATSAKES, JIMMIE  
Track 1, 2, 3, 4; Cross Country 3; Gens Togata 2, 3, 4.



BAUER, JOYCE, "Joy"  
Home Economics Club 4.

BECKTOLD, JOHNNIE

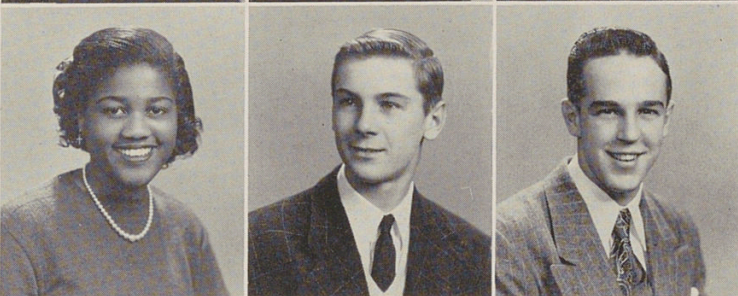
BEIER, CHARMAINE, "Charmy"  
Tower Y 4; Home Economics Club 4; Minstrels 2, 3.



BEMIS, BARBARA  
Tower News Representative 3.

BENDER, PAT  
Minstrels 2, 3; A Cappella Choir 2, 3, 4; Girls' Glee Club 1.

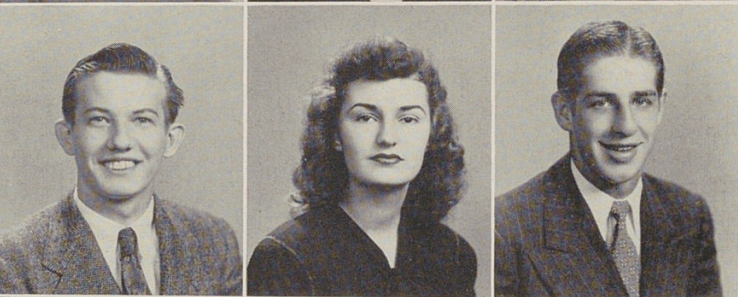
BENHASE, JIM  
Minstrels 2, 3; A Cappella Choir 2, 3, 4.



BENSON, FLORA ALICE  
Baseball 3; T.I.D. 4.

BILK, JACK

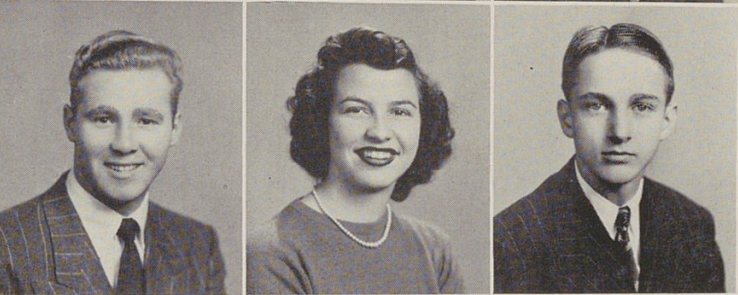
BILMAN, DONALD, "Jonnie"  
Golf 2, 3, 4; Delta Hi-Y 1; Tower News Representative 1.



BISCHOF, ED  
Entered Withrow in Sophomore year from Milan, Indiana.

BISSELL, PATRICIA ANN, "Pat"  
Entered Withrow in Junior year from Mt. Healthy, Ohio; Thalian 4.

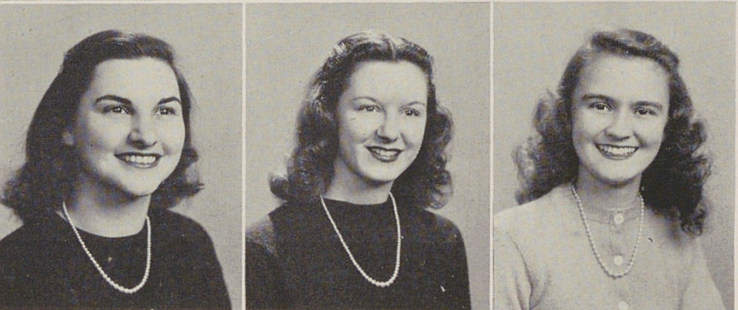
BLUM, ROBERT, "Rose Bud"  
Football 1, 2, 3, 4; Baseball 1, 2; Physics Club 4.



BLUM, ROGER, "Rog"  
Football 1, 2.

BOEHMER, MARIAN  
Beta Chi 3; Bowling 3; Tower-Y 4; War Stamp Representative 1.

BOLING, ROBERT  
Basketball 1; Baseball 2; Spanish Club 4.



BOOKOUT, BEVERLY SUE, "Susie"  
G.A.A. 3, 4; Bowling Club 3, 4; Archery Club 1, 4; Beta Chi 3, 4; Annual Advertising Staff 4; Tower News Business Staff 4; Red Cross Knitting Club 2, 3.

BOONE, BARBARA, "Jo"  
Spanish Club 3; Treasurer 3; Glee Club 3, 4, Vice President 4; Minstrels 1, 2, 3.

BORROW, CAROL  
Entered Withrow in Junior year from Chicago, Illinois; Tower-Y 4; Thalian 4.