

**PRESTON, FLORENCE, "Flo"**

Entered Withrow Junior year from Buffalo, New York Beta Chi 4.

**PRINZEL, RITA**

Skate Club 1, 2; Tower Y 3, 4; G.A.A. 3; Dance Club 3; Tip Toppers 3; War Stamp Representative 3; A Cappella Choir 4; Glee Club 3, 4; Home Economics 4.

**PROCTER, CATHERINE, "Cat"**



**PRYORE, CHESTER CORNELIUS, "Neil"**

Beginner's Mineral Club 1; Baseball 1; Advanced Mineral Club 2, Secretary 2; Defense Stamp Representative 2; Junior Choir, 2; Minstrels 2; Boys' Glee Club 1, 2, 3, Accompanist 2; Sigma Hi Y 1, 2, 3, Critic 3; Cutting and Polishing Club 3; Senior Choir 3; Graduated in three years.

**PUGH, DORIS, "Dodie"**

Spanish Club 2, 3, 4; Beta Chi 3, 4; Tower Y 4; Annual Literary Staff 4; Archery 4; Bowling 4; G.A.A. 4.

**PURIFICATO, CHARLES, "Chuck"**

Football 1, 2, 3; Baseball 2, 4.



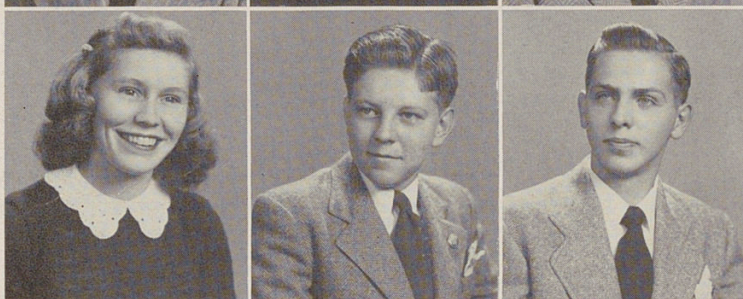
**PUTMAN, EDWIN R. "Put"**

**RADTKE, JEAN**

G.A.A. 1, 4; Girls' Glee Club 1, 2, 3, 4; Band 1, 4; Annual Ad. Staff 3; Athletic Representative 1, 2; Tower News 4; War Stamp Representative 3.

**RADTKE, LELAND, "Lee"**

Baseball 2; Spanish Club 2.



**RAHE, HELEN, "RAYE"**

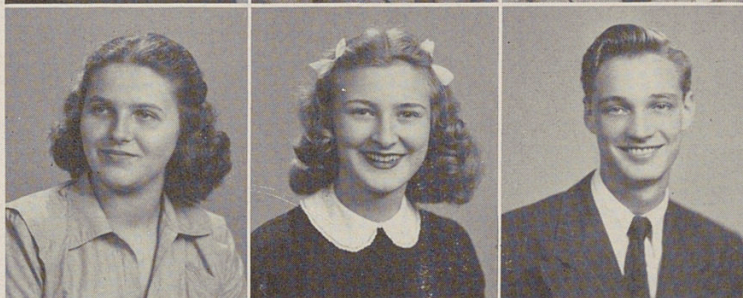
Girls' Glee Club 1, 2, 3, 4; Volley Ball 3, 4; Baseball 3; Gens Togata 3; Y Teens 4; Beta Chi 4; War Stamp Representative 3.

**RANSICK, Lee**

Annual Representative 1, 2, 3, 4; Camera Club 2.

**RATCLIFF, HALCOLM, "Hal"**

Beta Hi-Y, 4; Beta Chi 4.



**RATTERMANN, JOYCE**

Gens Togata 2, 3; Tower Y 4; Beta Chi 4.

**RAUH, MARTHA, "Marty"**

Entered Withrow in sophomore year from Buchtel High School, Akron, Ohio. Annual Literary Staff 3, 4, Assistant Editor 4; Camera Club 3, 4, Secretary Treasurer 4; Thalian Dramatic Club 3, 4; Girls' Glee Club 2, 3; Physics Club 3, 4; Alpha-Y 2; Tower-Y 3, 4; Gens Togata 2, 3, 4; Home Room Representative 3; Classical Music Club 3; Tower News Staff 4; Annual Representative 3; G.A.A. 3, 4; Volleyball 3, 4; Individual Sports 4; Tennis Club 4; Archery 4.

**RAUTENSTRAUCH, PHISTER, "Rocky"**

Re-entered Withrow in junior year from the Army. Track 4.



**RAYMOND, MARJORIE, "Margie"**

Alpha-Y 1, 2; Beta Chi 4.

**READMOND, JUNE**

Spanish Club 4; Volleyball 1, 3, 4; Badminton 2; G.A.A. 4; Beta Chi 3.

**REED, NORMAN, "Ace"**

Track 2, 3; Vice-President of W.V.A.C. 2, 3, 4; Basketball 2; Football 2, 3, 4. Came to Withrow in sophomore year from Shortridge, Indiana.



**REEVES, DAVID, "Slim"**

Beta HiY 4; Railroad Club 4; Thalian Dramatic Club 3, 4; Camera Club 4; Radio Club 4.

**REINHOLD, RONALD, "Reiny"**

Physics Club 3; Beta Hi Y 4, Program Director 4.

**REMPE, ROBERT, "Remp"**

Railroad Club 1; Beta Hi-Y 3; Bowling Team 3; Radio Club 3.