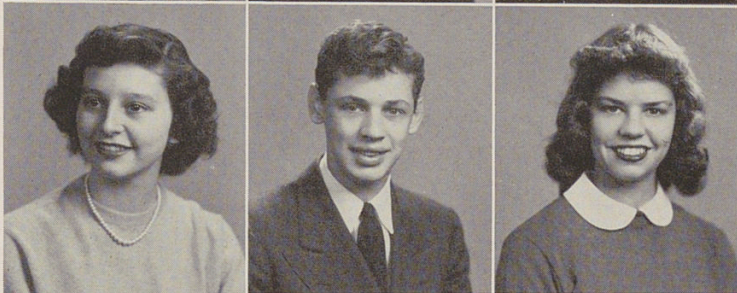




STANT, LOUIS, "Louie"

Nature Club 1, 2, 3; Sigma Gamma 4; Physics Club 3; Choir 4; Glee Club 3; Minstrels 3; Railroad Club 3, 4; Epsilon Hi-Y 1; Beta Hi-Y 4; Tennis Club 3.



STARR, CHARLENE, "Char"

Camera Club 2, 3, 4; Archery 1; Alpha Y 2; Physics Club 3; Tower Y 4.



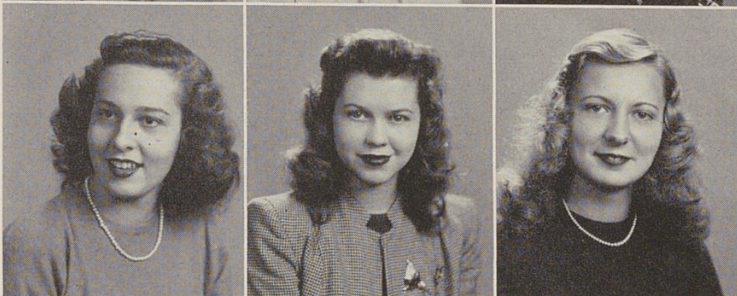
ST. CLAIR, JEAN

Tower Y 4; Alpha Y 2; G.A.A. 4; Bull's Eye Club 4.



STEIN, LaVERNE, "Ruthie"

Home Room Annual Representative 1, 2, 3; G.A.A. 1, 2, 3; Baseball 1, 2, 3; Swimming Club 1; Alpha Y 1, 2; Tower Y 3; French Club 2, 3; Glee Club 2, 3; Freshman Choir 1.



STEPHENS, JEROME P., "Jerry"

Entered Withrow in Senior year from Ashland, Kentucky; Varsity Basketball 4.



STEVENSON, BARBARA, "Barb"

G.A.A. 3, 4; Swimming; Tip Toppers 3; Thalian 3, 4; Physics Club 3; Tower News Reporter 3, 4; Tower News Representative 4; Quill and Scroll 3, 4; Classical Music Club 3, 4.



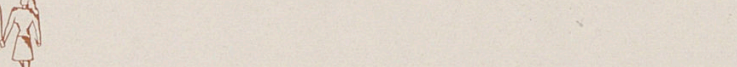
STEVENSON, GRACIE

Literatas 1, 2; Minstrels Design and Make Up 1, 2, 3; French Club 2, 3, 4; Treasurer 3; Tennis Club 4; Annual 2, 3, 4, Advertising Staff Manager 4.

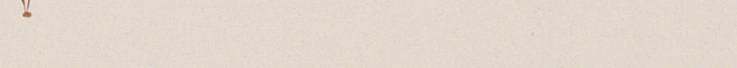


STEWART, JANET, "Jan"

Literatas 1, 2; G.A.A. 3, 4; Bowling 1, 3, 4; Volley Ball 3, 4; Tower Y 3; Girls' Glee Club 1, 2.

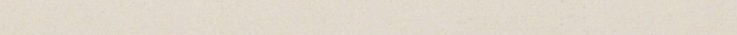


STEWART, TOM, "T-Dee"



STIGALL, CHARLES, "Stig"

Railroad Club 3, 4; Camera Club 3, 4; Secretary-Treasurer 4; Stamp and Coin Club 1; War Stamp Representative 1; Individual Sports 1; Bowling Club 1; Nature Club 3, 4; Tower News 3.



STILLMAKER, JEANNE, "Stilly"

Spanish Club 1, 2, 3, 4; Secretary 2; French Club 4; G.A.A. 1; Baseball 1, 2, 4; Basketball 2, 3; Table Tennis 3; Tower Y 4; Bowling 4; Volley Ball 2.

STITTS, MAXEL, "Max"

Archery 1; War Stamps 1; Chess 1; Annual Representative 1; Minstrels 2; Tennis 4; Physics Club 4; Beta Chi 4; Hi Y 4; Camera Club 4; A Cappella Choir 2; Athletic Representative 4.

STOFFER, MARTHA, "Marty"

Alpha Y 1, 2; Tower Y 3, 4; Minstrels 3; Beta Chi 4; Tip Toppers 4.

STOFFREGEN, WILMA, "Willi"

Glee Club 1, 2, 3, 4.

STRANGE, VIRGINIA, "Ginny"

A Cappella Choir 2, 3; Archery 1, 2; Volley Ball 1, 2.

STREET, MARILYN, "Dyna"

Ad Staff 4; G.A.A. 4; Bowling Club 4.

STUNTZ, ELEANOR, "Ellie"

Volley Ball 2; Swimming Club 2, 4; Spanish Club 1, 4; Tower Y 4; Glee Club 1, 2, 3; Freshman Choir 1; Baseball 4.

STURGEON, VERA, "Boots"

Freshman Choir 1; Junior Choir 1, 2; Alpha Y 2; Tower Y 3, 4; Beta Chi 3, 4; Tennis 1; Home Economics Club 4; Glee Club 1, 2, 3.

STURM, HELEN ANN

Archery 1; War Stamp Representative 1, 2; Volley Ball 2; Physics Club 3; German Club 3, 4; Secretary 3, 4; Tower Y 4; Home Economics Club 4.

SUDBRACK, CLAIRE, "Dimples"

Alpha Y 2; Gens Togata 2; Bowling Club 1, 2; Lunch Room.

SUTHERLAND, DOTTE, "Dot"

Entered from New Hanover High School, Wilmington, North Carolina in Junior year.