

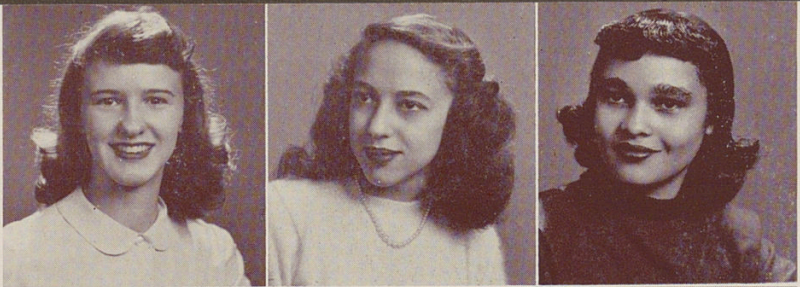
**ABRAHAM, RUTH CLAIRE, "Ruthie"**

A Cappella Choir 3, 4; G.A.A. 1, 4; Thalian Dramatic Club 3, 4; Withrow Minstrels 3; Spanish Club 4; Gens Togata 1; Bowling Team 3.

**ACKERMANN, MARTHA, "Marty"**

Alpha Y 2; Tower Y 3, 4; Home Economics 4; Beta Chi 4.

**ADAIR, NYDA MARJORIE, "Butch"**



**ADAMS, DAVE, "D.L."**

French Club 2.

**ADAMS, JOAN**

**ADEN, JEAN, "Jeanie"**

Bowling Club 1, 2; Volleyball 1, 2; Baseball 1, 2; Home Economics Club 4; Beta Chi 4; Tip Toppers Club 2, 3, 4; Treasurer 4; Future Merchandisers 4.



**ALLEE, CAROL**

War stamp Representative 1; Alpha Y 2; Tower Y 3; Annual Business Staff 2, 3, 4, Co-Manager 4.

**ALLEN, MARY SUE, "Tudy"**

A Cappella Choir 2, 3, 4, Secretary 4; Girls Glee Club 1, 4; Tennis Club 4; G.A.A. 2, 3, 4; Dance Club 2, 3, 4; Gens Togata 1; Minstrels 2, 3, 4; Basketball 4; Volleyball 4; Madrigal Choir 4.

**ALLEN, RICHARD NELSON, "Alan"**

Band 1, 2, 3, 4; Presentation Orchestra 1, 2, 3, 4; German Club 2, 3.



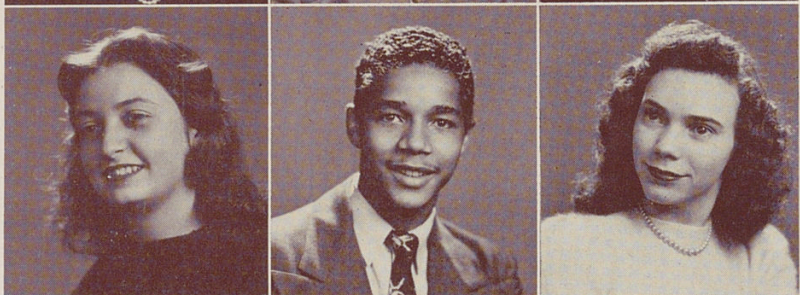
**ALLISON, NORMA JEAN, "Dorbie"**

Tower News 3, 4, Page two Co-Editor 4; A Cappella Choir 2, 3; Orchestra 1, 2, 3, 4; Minstrel Presentation Orchestra 2, 3, 4; Literatas 1, 2, Vice-President 2; Scribblers 3, 4, Vice-President 3; French Club 4; Girls Glee Club 1; Dux Femina 4; Senior Council 4; Gens Togata; String Quartette.

**ANDERSON, JAMES**

**ANDERSON, SHIRLEY**

Beta Chi 3, 4; Tower Y 4; Home Economics 4; Dance Club 4.



**ANDREADIS, SOPHIE**

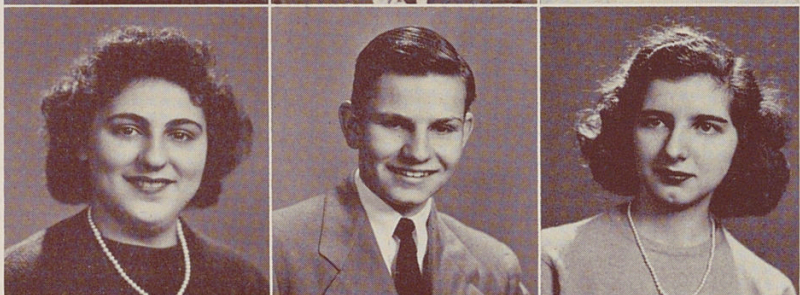
G.A.A. 1, 2, 3, 4; Hockey 2, 3, 4; Volleyball 1, 2; Baseball 1, 2; Tower Y 3, 4.

**AVRIL, FERDINAND RITTER**

Sigma Gamma 4; Band 1, 2, 3, 4; Presentation Orchestra 1, 2, 3, 4; Withrow Players 3, 4; Hi-Y 3.

**ANDREWS, PATRICIA ANN, "Pat"**

Freshman Choir 1; Junior Choir 1, 2; Glee Club 3, 4; Hockey 2; Volleyball 3; Annual Typist 4.



**ANDRIOT, JOY HOPE**

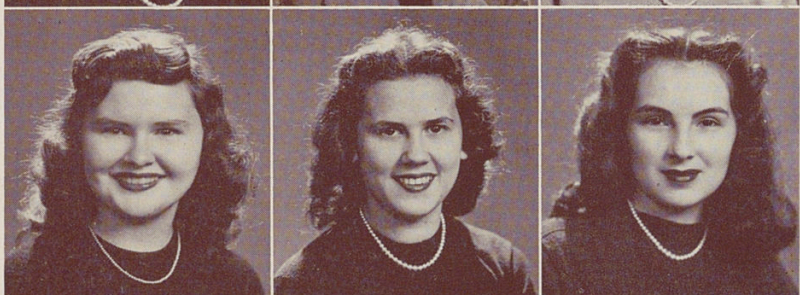
Alpha Y 1; Minstrels 2, 3; Bowling 3; Home Economics Club 3, 4.

**ANCHUTZ, MARY JANE, "Shutz"**

Glee Club 1, 2; Freshman Dramatics 1; Junior Choir 2; Gens Togata 1, 2, 3; Scribblers 3, 3; A Cappella Choir 3, 4; Minstrels 2, 3, 4; Freshman Choir 1; Off-Key Club 1; Tower Y 4; Madrigal Choir 4.

**ARMANDROFF, JACKIE GAY**

Glee Club 1, 2, 3, 4; Junior Choir 1, 2; Spanish Club 3, 4; Dance Club 2, 3; G.A.A. 1, 2, 3; Archery 1; Athletic Representative 3; Bowling 4.



**ARMSTRONG, KEATING A., "Ken"**

Entered Withrow from Deer Park High School in senior year; Tower News 4; Annual Staff 4; Tiptoppers 4; Beta Hi-Y 4; Withrow Players 4.

**ATKINSON, BARBARA ALLYNE, "Barb"**

Tower News Representative 1, 2; Home Economics Club 4; Tower Y 3, 4; Beta Chi 4.

**ATTIG, JANICE MARY, "Teedie"**

Basketball 1; Music Club 2; Freshman Dramatic Club 1; Tower Y 3, 4; Tennis Club 4; Home Economics Club 4.

