

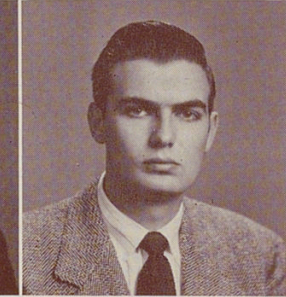
KEITH, WALTER EUGENE, "Walt"

Beta Chi 3.

KEMP, CHARLOTTE JANE, "Janie"

Dux Femina 4; Girls Glee Club 2, 3, 4; Junior Choir 1, 2; A Cappella Choir 3, 4; Robe Chairman 4; Senior Council 4; Annual Advertising Staff 2, 3; Gens Togata 1, 2; Secretary 2; Scribblers 3, 4; Secretary 4; Off-Key Club 3; Minstrels 3; Tower News 4; Tower News Representative 4.

KENDLE, NINA FAYE



KERCHNER, GRACE WINNIFRED, "Winnie"

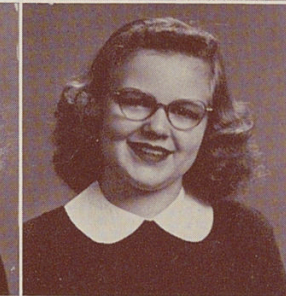
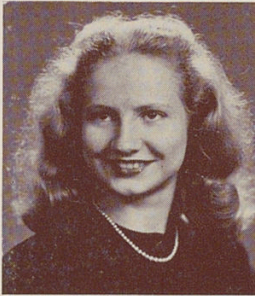
Literatas 2.

KIRSCHNER, GERSON

Entered Withrow in Junior Year from Hughes; Minstrels 3.

KIRSTEN, RONALD, "Ron"

Tip Toppers 2, 3, 4, Vice President 4.



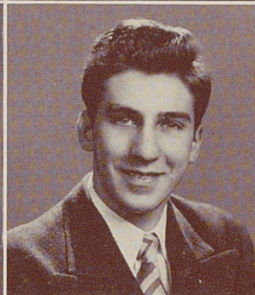
KJELLENBERG, MARILYN JOANNE, "Shelly"

Dance Club 2, 3, 4, President 4; Hockey 1, 2; Withrow Players 3, 4, Secretary 4; G.A.A. 1, 2, 3, 4; Tower News Representative 2; Glee Club 3, 4; Junior Choir 2; Minstrels 2, 3.

KNIGHT, ELLEN LEE

KNODEL, MARILYN

Dux Femina 4; Withrow Players 2, 3, 4, Treasurer 4; Band 1, 2, 3; Presentation Orchestra 1, 2, 3, 4, Orchestra 2, 3; Literatas 1, 2, Treasurer 2; Scribblers 3, 4; Tower News 3, 4; Off-Key Club 3; Gens Togata 1, 2; Physics Club 3; Annual Representation 1; War Stamp Representative 2; Athletic Representative 4; G.A.A. 1; Volleyball 1.



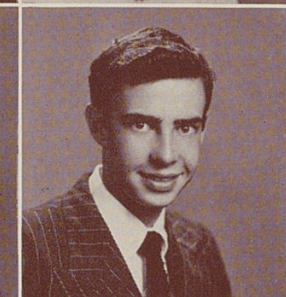
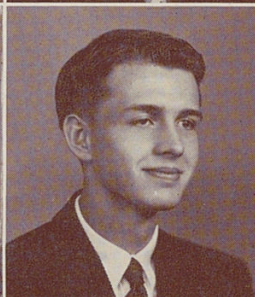
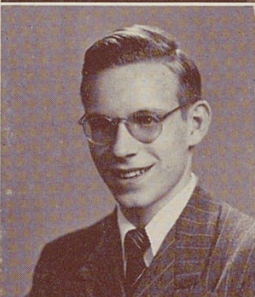
KNOLL, MARTHA, "Marty"

Dance Club 1, 2, 3, Treasurer 2; Glee Club 1; A Cappella Choir 2, 3, 4; Librarian 3, 4; Minstrels 2, 3; War Stamp Representative 1; Tennis Club 3, 4; Spanish Club 4; Withrow Players 1, 2; G.A.A. 1, 2, 3, 4; Volleyball 4; Off-Key Club 2, 3; Madrigal Choir 4.

KOCH, ARTHUR WILLIAM, "Cookie"

KOEHLER, BETTY LOU, "Lou"

Thalian 3, 4; Tip Toppers 2, 3, 4, Secretary 3; Tower News Representative 2, 3; Dance Club 1, 2; Volleyball 1, 2, 3, 4; Bowling 3, 4.



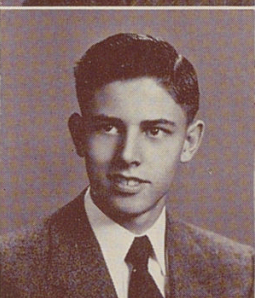
KOENINGER, EDWARD, "Ed"

KORSEBARG, RICHARD GENE

Annual Representative 2; Presentation Orchestra 2, 3; Band 2, 3, 4; Orchestra 2, 3, 4.

KRIENEN, WILLIAM CHARLES, "Tiger"

Entered Withrow in Junior year; Annual Staff 3; Tennis Club 3; Tower News 4.



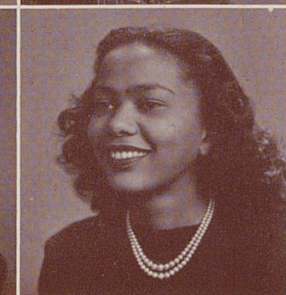
KRUMMEL, WALTER PAUL

Physics Club 3, Vice President 3; Hi-Y 3, 4; Bowling Team 3, 4; Golf Team 3, 4; Tennis Club 3; Camera Club 4.

LAHUSEN, KATHERINE, "Katie"

Entered Withrow in Junior Year; Camer Club 3, 4; Tower Y 3, 4; Physics Club 4.

LAING, BEVERLY



LANCASTER, NANCY HELEN, "Nance"

Entered Withrow in Junior Year; A Cappella Choir 3, 4; Tip Toppers 3, 4; Physics Club 4; Swimming Club 4.

LAWRENCE, DOROTHY ANN, "Dot"

G.A.A. 2, 3, 4; Tower Y 3, 4; Thalian 3, 4; Lunchroom 3, 4; Bowling Team 2, 3; Archery 3, 4.

LEAHR, ROBERTA FLORENCE, "Bert"

Girl Reserves 1, 2, 3; Beta Chi 4; Home Economics Club 4.