

LECKE, MAXINE CAROLYN, "Max"

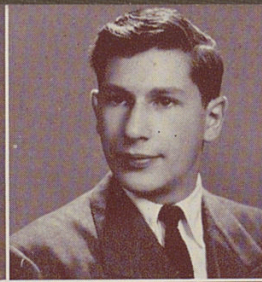
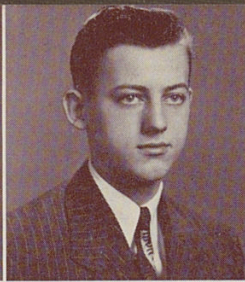
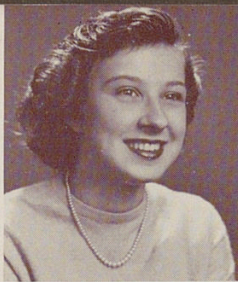
Baseball 1; Glee Club 4; Volleyball 2; Tower Y 3, 4; Junior Choir 3.

LEIMBERGER, JOHN ROBERT

Gym Team 3.

LEVI, DONALD M., "Don"

Stamp Club 1; Alpha Hi-Y 3; Band 1, 2, 3, 4; Minstrels 1, 2, 3; Presentation Orchestra 4.



LEWIS, ELEANOR JEANNE, "Jeannie"

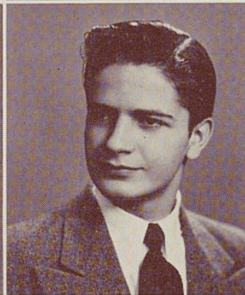
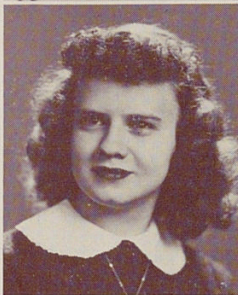
Volleyball 1; G.A.A. 1, 2; Beta Chi 2, 3; Band 3, 4; Tower Y 4; Home Economics Club 4.

LEWIS, O. MAYO

Camera Club 1, 2; Physics Club 2, 3; Radio Club 2; Minstrels 2, 3.

LOSCHIAVO, ROSEMARY, "Ro"

Freshman Choir 1; Junior Choir 1, 2, 3; Glee Club 4; Tower News Representative 3; Home Economics Club 4.



LOVE, ELIZABETH MARIE, "Tootie"

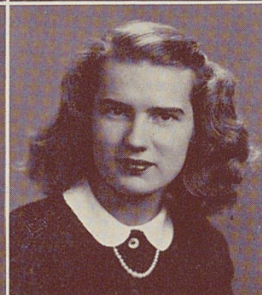
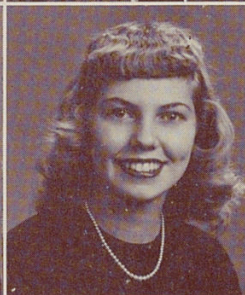
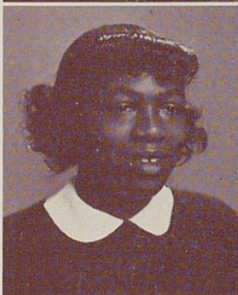
Lunchroom 1, 2.

LUCAS, JOAN, "Putsie"

Music Appreciation Club 2; Bowling Club 3; G.A.A. 3; Tower Y 3; Bulls Eye Club 3; Minstrels 3; Junior Choir 3; Home Economics Club 3; Off-Key Club 3; A Cappella Chord 4; Minstrel Make-Up Committee 4; Annual Representative 3.

LUEDEKER, EVELYN HENNY, "Eve"

Bowling Club 3, 4; Beta Chi 3.



LUNDBERG, BARBARA JANE, "Barb"

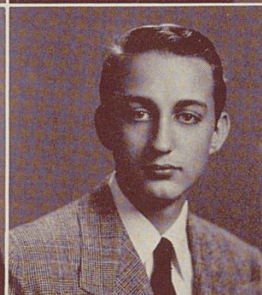
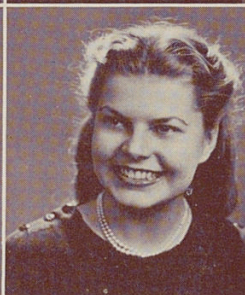
Tower News 4; Girls Glee Club 1, 2, 3, 4; A Cappella Choir 4; Beta Chi 2; Tower Y 3; G.A.A. 3, 4; Music Club 1; Freshman Choir 1; Baseball 3; Basketball 3.

LUNDQUIST, JOANNE LOUISE

Entered Withrow in Junior Year from Hartford, Connecticut. Dance Club 3; Tower News 3; Senior Choir 3, 4; Home Economics Club 3; Physics Club 4; Tennis Club 4; Madrigal Choir 4 (Alternate).

LUTZ, THOMAS A.

Glee Club 2, 3, 4; Minstrels 3.



LUYSTER, MARJORIE BLANCH

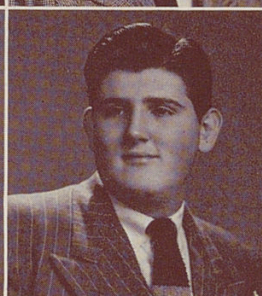
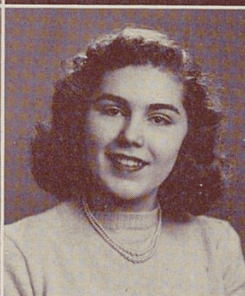
G.A.A. 1, 2, 3; Senior Life Saving 3.

LYNN, LUCILLE, "Luce"

Volleyball 2; Baseball 3; Basketball 3, 4; Dance Club 3; G.A.A. 3, 4; Bowling 4.

MACARTHY, DAVID JACKSON, "Mac"

Band 1, 2, 3, 4; Lunchroom 3, 4; Alpha Hi-Y 3; Beta Hi-Y 4; Railroad Club 3, 4; Board of Directors 3, 4; Sergeant at Arms 3; Track 1; Basketball Manager 2; Minstrels 1, 2, 3; Annual Representative 4.



MAGEL, SALLY ANN

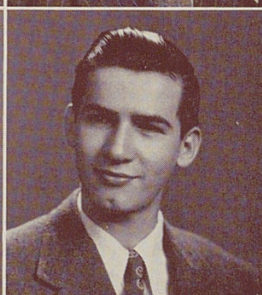
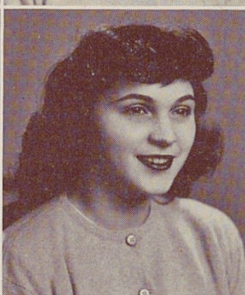
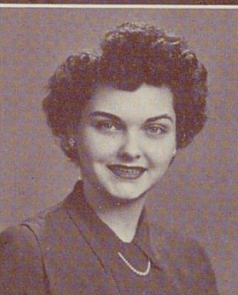
Entered Withrow in Junior Year.

MALORA, ELISSA JEAN, "Elis"

Entered Withrow in Junior Year; Music Club 3; Physics Club 3; Junior Choir 3; Tennis Club 3, 4; Tower Y 3, 4; Thalian 4; A Cappella Choir 4; Girls Glee Club 4.

MALLORY, JOHN LAWRENCE

Entered Withrow in Senior year. Stamp Club 4.



MANN, MERLIN D., "Merle"

Boys Glee Club 1, 2, 3, 4; Minstrels 1, 2, 3; Tower News 3, 4; Circulation Manager 4; Track 1, 2; War Stamp Representative 1, 2.

MANTHEY, JANET, "Jan"

Glee Club 2, 3, 4; G.A.A. 1, 2, 3, 4; French Club 3, 4; Tower Y 3, 4; Dance Club 3, 4.

MAPLE, MAUDE JESSIE

Gens Togata 2, 3, 4.

