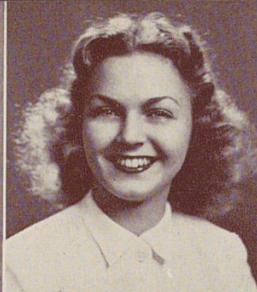


**REESE, EILEEN, "Ike"**

Riding Club 3; Home Economics Club 4; G.A.A. 3, 4; Minstrels Sewing Committee 3, 4; Hockey 1; Volleyball 2.

**REEVES, JOYCE A.**

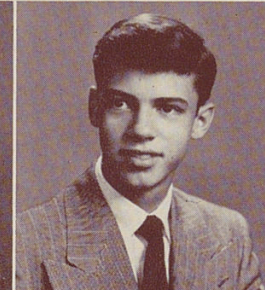
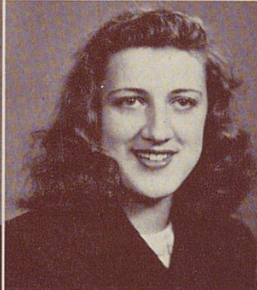
A Cappella Choir 2, 3; G.A.A. 1, 2, 3; Dance Club 1, 2, 3; Minstrels 2, 3; Athletic Representative 3; Girls Glee Club 1; Tennis Club 3; Spanish Club 1, 2, 3, Program Chairman 3.

**REEVES, JOYCE ANN, "Jo"****REINER, SHIRLEY JEAN, "Shirl"**

Chess Club 1; Bowling Club 2, 3; Annual Representative 1, 3; Junior Choir 2, 3, 4; Home Economics Club 4.

**REINHOLD, JEANNINE MARIE**

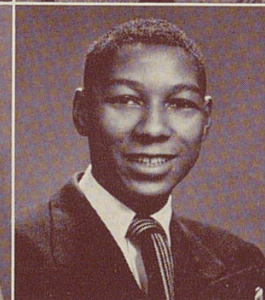
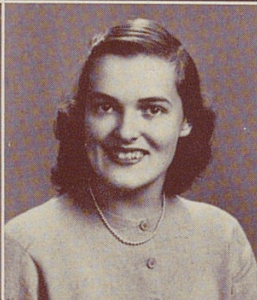
Hockey 1; Swimming Club 1, 2, 3, 4; G.A.A. 1, 2, 3, 4; Life Saving 1, 3; Baseball 1; Archery 2, 4; Water Pageant 2; Tower Y 3; Riding Club 3; Home Economics Club 4; Volleyball 1; Freshman Choir 1; Athletic Representative 2, 3; Basketball 4.

**RESER, LOUIS, "Lou"****RICKETSON, HOWARD C., "Rick"****RIGGERS, MARGARET WILMA**

Glee Club 1, 2; A Cappella Choir 2, 3; Beta Chi 2, 3, 4; Tip Toppers 1, 2, 4; G.A.A. 1, 4; Home Economics Club 4; Music Club 2, 3; Gens Togata 2; Basketball 2; Volleyball 4.

**RILEY, JAMES, "Pickle"**

Tennis Club 3; Tennis Team 3.

**RIMMER, NANCY JANE, "Nance"**

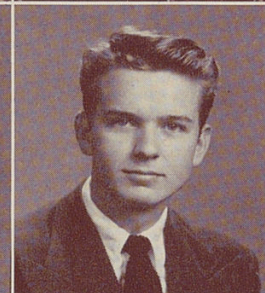
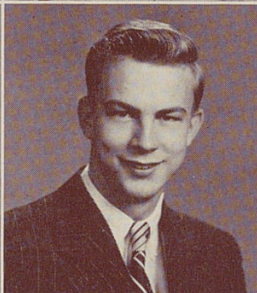
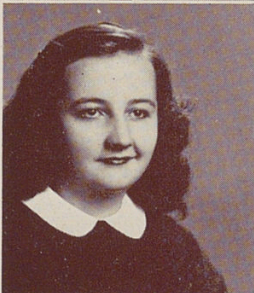
G.A.A. 1, 4; Bowling 1, 2; Alpha Y 1; Tower Y 4; Home Economics Club 4; Beta Chi 4; Volleyball 1, 4.

**RIPPE, HERBERT LOUIS, "Rip"**

Entered Withrow from Central High in Sophomore Year; Cross Country 2; Athletic Representative 2.

**ROACH, EDWARD ALLEN**

A Cappella Choir 3, 4; Minstrels 3, 4; Physics Club 3; Gens Togata 2; Track 1, 2.

**ROBINSON, ELLEN VIRGINIA, "Bunts"**

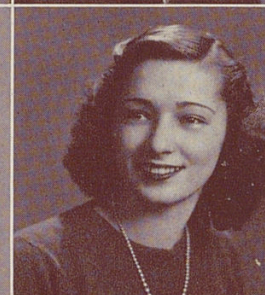
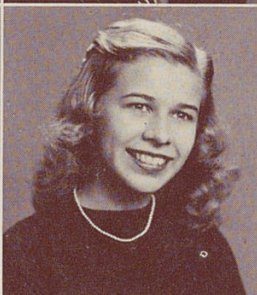
Entered Withrow in Sophomore Year; Girl Reserves 1, 2; Beta Chi 1; Glee Club 1.

**ROLF, NANCY LOUISE, "Nance"**

Spanish Club 2, 3, 4; Hockey 1, 2, 3; Volleyball 1, 2, 3; G.A.A. 1; Glee Club 1, 2; A Cappella Choir 2, 3, 4.

**ROUDEBUSH, NANCY ELIZABETH, "Nance"**

Swimming Club 1, 2, 3, 4, Manager 4; Swimming Team 3; Spanish Club 4; Tip Toppers 2, 3; Archery 3; G.A.A. 1, 2, 3, 4; Basketball 2; Tower News 4; Senior Life Saving 3; Water Pageant 2, 4.

**RUBENBAUER, SHIRLEY JOY, "Joy"**

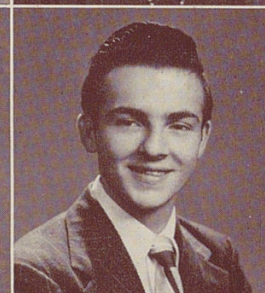
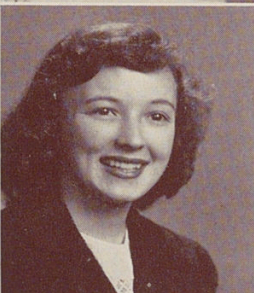
Tower News 4; Tower Y 2, 3, 4, President 4; Minstrels 2, 3, 4; War Stamp Representative 1, 2.

**RUCHTY, MARY CLARE, "M. C."**

Entered Withrow from St. Mary's in Sophomore Year. Dux Femina 4; Spanish Club 3, 4; Beta Chi 3; Thalian Dramatic Club 3, 4, Corresponding Secretary 4; Tower News 3, 4, Exchange Editor 4; Glee Club 2; G.A.A. 2, 3, 4; Swimming Club 2, 3, 4; Dance Club 2, 3, 4; Individual Sports 3, 4; Basketball 4; Volleyball 4; Baseball 4.

**RUTHERFORD, ORION ALBERT, "Shorty"**

Tower News Representative 2; Basketball 1; Baseball 2; Track 1, Manager 1.

**SANDBURG, DONALD, "Don"**

Stamp Club 1; Tower News 1; Nature Club 1; Hi-Y 3, 4; Physics Club 4; Annual Representative 3.

**SANDERS, JANET KATHRYNE, "Sandy"**

G.A.A. 2, 4; Bowling 3, 4; Gen Togata 3.

**SCHANZ, KENNETH M., "Ken"**

Boys Glee Club 2, 3; Junior Choir 2, 3; A Cappella Choir 4; Minstrels 3, 4; Baseball 2.

