**TURNER, RELAUS, "Reed"**

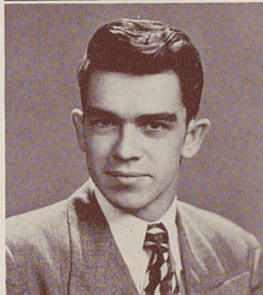
Football 2; President of Sigma Hi Y.

TYNAN, VERNON EUGENE, "Tiny"

Track 1; Junior Choir 2; Glee Club 1, 2.

VARNAU, HELEN JEAN

German Club 2, 3; Tower Y 3; Home Economics Club 4.

**VEGA, DANIEL POWELL, "Dan"**

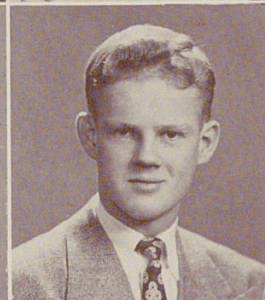
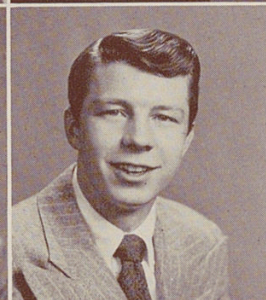
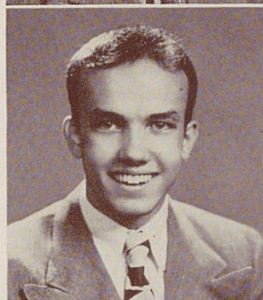
Tennis Club 2; Minstrels 2, 3; Alpha Hi Y 3; A Cappella Choir 3; Beta Hi Y 4; Boys Glee Club 2, 3; Track Team 1.

VENABLE, MARY ANN

Mistrel Sewing Committee 1, 2; Bowling 3; Home Economics 3, 4; Treasurer 3.

VETORINO, ELEANOR JEAN, "Blackie"

G.A.A. 1, 2, 3; Tower Y 3; Junior Choir 1, 2; Archery 1, 2, 3; Bull's Eye Club 1, 2; Baseball 3; Volleyball 1, 2.

**VEHR, ROY KENNETH**

German Club 4.

VOGEL, WILLIAM, "Bill"**VOSS, JOHN H., "Jack"**

Football 1; Off-Key Club 3, 4.

WARNER, JAMES EARL, "Hymie"

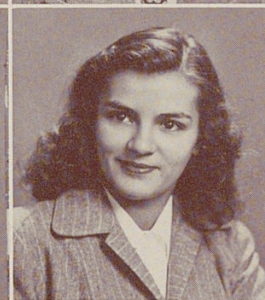
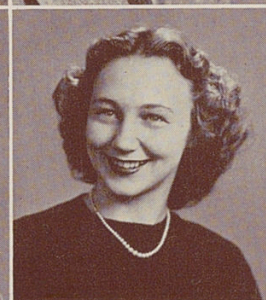
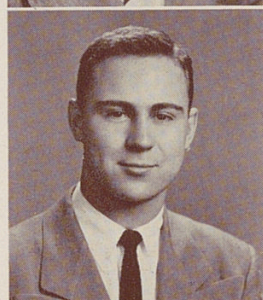
Boys Glee Club 1; A Cappella Choir 2, 3, 4; Vice President 4; War Stamp Representative 1, 2; Minstrels 1, 2, 3, 4; Off-Key Club 3; Railroad 4.

WEEKS, MYRA RUTH

Dance Club 1, 2, 3, 4; Basketball 2; Volleyball 2, 4; Baseball 2; Swimming Pageant 2, 4; G.A.A. 1, 2, 3, 4.

WEIGEL, JANET THERESA, "Jan"

Hockey 1, 2, 3, 4; G.A.A. 1, 2, 3, 4; Volleyball 1, 2, 3, 4; Basketball 1, 2, 3, 4; Baseball 1, 2, 3, 4; Manager 4; Outing Club 2, 4; Tennis 4; Tennis Club 4; Bowling 4; Archery 2.

**WEISS, BETTY ANNE, "Puhdie"**

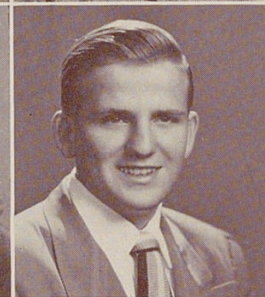
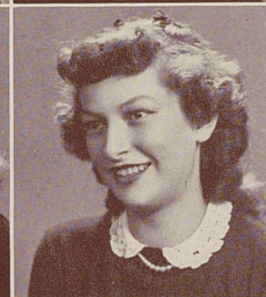
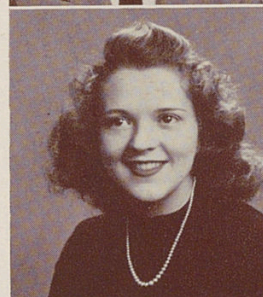
Alpha Y 2; Gens Togata 2; Tower Y 3, 4; Spanish Club 4; Home Economics Club 4.

WEISE, DORIS JOAN, "Dorie"

Alpha Y 2; G.A.A. 1; Home Economics Club 4; Beta Chi 4; Tower Y 4; Athletic Representative 4.

WENDEL, ARTHUR WILLIAM, "Art"

Golf Team 1, 4; Camera Club 3, 4; Latin Club 3; Railroad Club 4; Annual Representative 2; War Stamp Representative 1, 2; Beta Chi 4; Tower News 4; Tip Toppers 4.

**WEST, MARLYS ROSE**

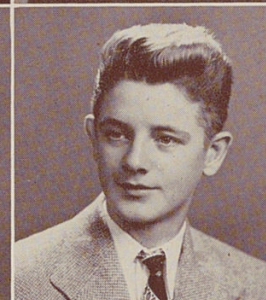
Literatas 1, 2; Tower Y 3, 4; Gen Togata 3, 4; Bowling 3, 4; Manager 4; G.A.A. 3, 4; Minstrels 2, 3, 4; Basketball 3, 4; Volleyball 3, 4; Home Economics Club 3, 4; Vice President 3, 4.

WESTON, JAMES ALBERT

Entered Withrow from Covina High School in Senior Year.

WHEATLEY, COLLEEN RAE

Girls Glee Club 2, 3, 4; Athletic Representative 3; Archery 1; Table Tennis 2, 4; Volleyball 2, 3; Hockey 1, 2.

**WHEELER, MARJORIE ANN, "Marg"**

Archery 1; Alpha Y 2; Beta Chi 3; Home Economics Club 2, 4.

WHITE, GARNET MAY

Girls Glee Club 2, 3, 4; Dance Club 2, 3, 4; Thalian Dramatic Club 3, 4; G.A.A. 2, 3, 4; Beta Chi 2; Tower Y 3.

WHITE, MARY ALICE

Alpha Y 1; Beta Chi 3; Tower Y 3; Tower Y 3; Tower News Representative 4.

