



Joe Frattalone, Co-Art Editor



Pat Finn, Co-Art Editor



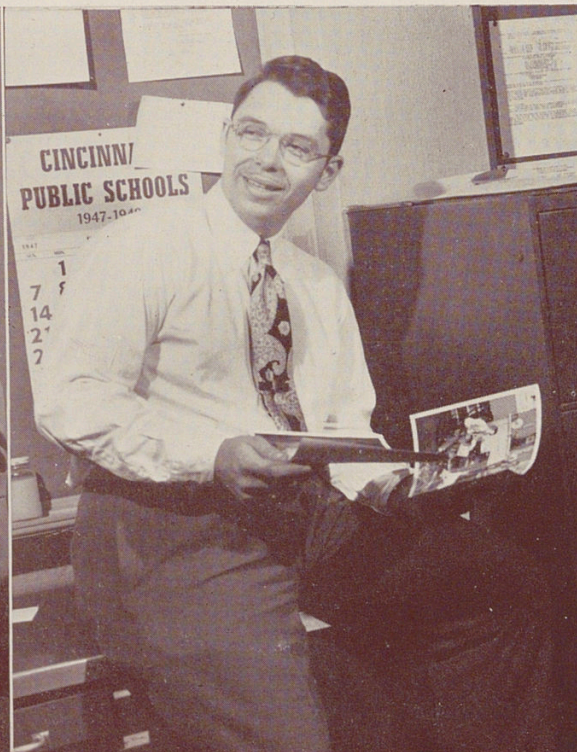
Walter Meade, Literary Editor

Through the cooperation of the literary staff editor, the advertising editor, and the art editors, the Withrow Annual has become a real success. Endless hours of work and worry may cause wrinkles and gray hairs for these busy bees, but their great satisfaction comes when they see their masterpiece, The 1948 Withrow Annual. Well organized staffs are essential to this victory. It is the responsibility of the editors and their staffs to see that all materials are submitted to the printers on time so that YOU may receive your annual by class day.

Mary Ann Cramer and Carol Allee, Co-Business Managers



Jim Morrissey, Co-Ad Manager



Stan Hermette, Co-Ad Manager

