



Row 1—Adkins, Bette Glynn: Literatas 1,2; Scribblers 4; Vice Pres. 3; Spanish Club 4; Thalian 3,4; Tower News Rep. 1,2,3, First Page Co-Editor 4; Athletic Rep. 2. **Adler, Herbert Paul ("Herb"). Aigner, June Emily:** Beta Chi 2; Junior Choir 3; Alpha-Y 2.

Row 2—Albrecht, Dorothy Marie ("Dottie"): Camera 2,3,4; Lunchroom 1,2,3,4. **Alexander, Betty Lou ("Lou"):** Home Ec. Club 4; Bowling 2,3,4; Volleyball 3,4; Phi Gamma Sigma, Pres. **Albrecht, Ruth Evelyn:** Gens Togata 1,2,3; Lunchroom 1,2,3,4; C.L.C.

Row 3—Anderegg, David ("Dave"): Sigma Gamma; History Club 2; Vice Pres. 3; Philologia 3; Vice Pres. 4; Senior Choir 2,3, Treas. 4; Minstrels 1,2,3,4; Tennis Club 1,2,3; Tower News 3; Business Mgr. 4; Senior Council; Alpha Hi-Y 3; Beta Hi-Y; Tri Chi. **Anderson, Juanita Rose ("Min"):** Beta Chi 2,3; Future Merchandisers 4; Physics Club 3; Spanish Club 2,3; G.A.A. 1,2,3; Dolphin Club 2,3,4; Baseball 1,3; Alpha Hi-Y 1; Interfraternity Council 3,4; Phi Gamma Sigma, Treas. 4. **Anshutz, William Stover ("Bill"):** History Club 3,4; Physics Club 3; Philologia 3,4; Baseball 1,3,4; Basketball 1,2; Football 1,2,3,4; Tiger Club 3,4; Alpha Hi-Y 3; Beta Hi-Y, Treas. 4; Tri Chi.

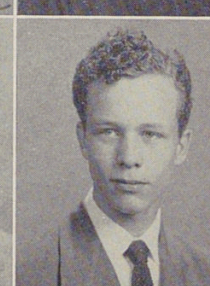
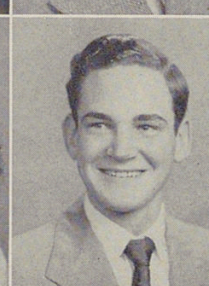
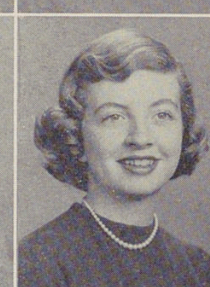
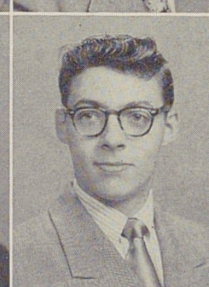
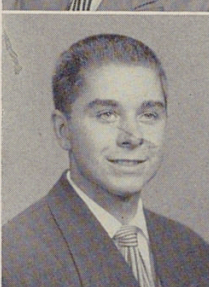
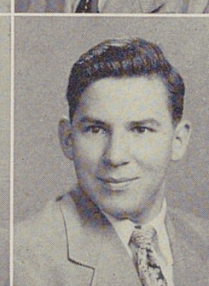
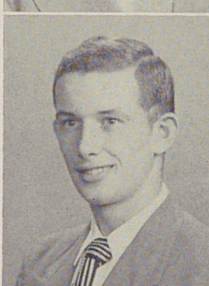
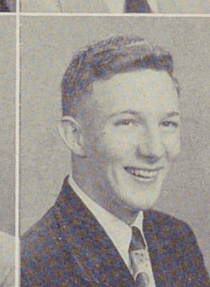
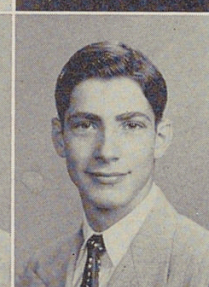
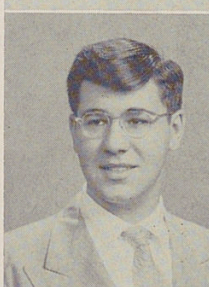
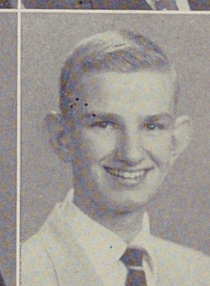
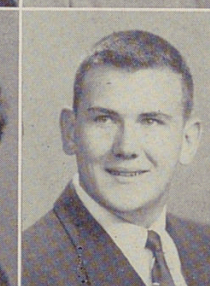
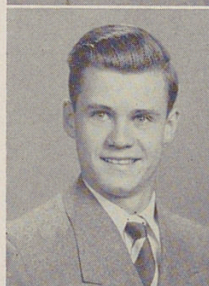
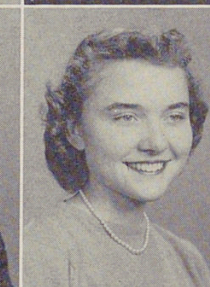
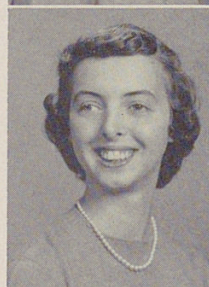
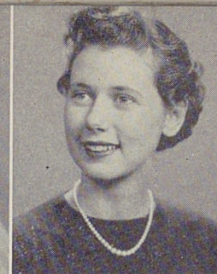
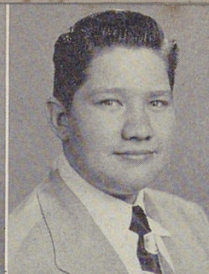
Row 4—Anthe, Dorothy Pauline ("Dottie"): Home Ec. Club 1; Girls' Glee Club 3,4; Baseball 2; Theta Alpha. **Ashman, Margaret Ann ("Marg"):** Dux Femina; French Club 3,4; Scribblers 4; Gens Togata 1,2; Junior Town Meeting Club 4; Minstrels 3,4; G.A.A. 1,2,3,4; Volleyball 1,2,3,4; Baseball 2,4; Dance Club 1,2,3; Tennis Club 1; Bowling 4; Tower News Rep. 4; Altruist. **Avril, Werneth John ("Wernie"):** Band 1, 2,3; Co-Pres. 4; Orchestra 1,2,3,4; Minstrels 1,2,3,4; Withrow Players 1,2,3, Pres. 4; Tower News 3; Tower News Rep. 2,3; Alpha Hi-Y, Sec. 3; Beta Hi-Y 4; Tri Chi, Vice Pres. 4.

Row 5—Aglamesis, Peter Thomas ("Pete"): Philologia 3,4. **Ballard, Francis James ("Frank"):** Entered Withrow in Junior year from Walnut Hills; Minstrels 3,4; Alpha Hi-Y 3; Beta Hi-Y 4; Chi Sig. **Bang, George Robert ("Gay"):** Entered Withrow in Sophomore year from Hughes; Gens Togata 3; Thalian 4; Pep Squad 2

Row 6—Barbeau, Robert Edward ("Ears"): Football 2,3,4; Baseball 3,4. **Bardis, Thomas John ("Tor"):** Baseball 3,4; Iota. **Barnes, Jeane Marlene ("Marie"):** Merchandising Club; Home Ec. Club 1,2; Minstrels 3,4; G.A.A. Bowling; Annual Rep. 1,3; Alpha Y; Theta Alpha.

Row 7—Barnes, John Ray: Gens Togata 2; Philologia 3,4; Physics Club 3; Minstrels 1,2,3,4; Tennis Club 1,2; Thalian 3,4; Projection Crew 1,2,3, 4; Railroad Club 1; Alpha Hi-Y 3; Beta Hi-Y 4; Chi Sig, Sgt.-at-Arms 2; Vice Pres. 3. **Barton, John Howard:** Annual Rep. 3; Projection Crew 1,2; T.O. **Batsche, Jean Sherwood ("Jeannie"):** French Club 3,4; Minstrels 3; G.A.A. 2,3; Volleyball 2,3; Baseball 2; Dance Club 2,3; Tennis Club 4; Tower News 3; Pep Squad 2; Alpha-Y 1, Vice Pres. 2; E.O.X., Pres. 4.

Row 8—Bauer, Mary Elizabeth ("Minnie"): Beta Chi 4; Home Ec. Club 4; G.A.A. 3,4; Basketball 3,4; Volleyball 2,3,4. **Bauer, August Paul:** French Club 4; Annual Photographer 3; Annual Rep. 1; Tower News Rep. 4. **Beck, Ben:** Entered Withrow in Sophomore year from Hughes; T.O., Treas. 4.



proud withrow graduates,