



Row 1—Martin, John Clifford ("Jay"): Entered Withrow in Freshman year from Newport, Ky.; Football 1,2,3,4; Basketball 1,2; Track 1,2,3; Baseball 2; Beta Hi-Y 3,4. **Mattes, Marlene Marie**: German Club 1,2,3; Vice-Pres. 4; Physics Club 3; Senior Choir 2,3,4; Minstrels 2,3,4; G.A.A. 1,2,3,4; Hockey 2,3,4; Volleyball 1,2,3,4; Basketball 1,2,3; Mgr. 4; Baseball 1,2,3,4; Individual Sports 3,4; Bowling 4. **McCabe, David Frederic** ("Dave"): Football 1.

Row 2—McCollom, Dorothy Jean ("Dottie"): Home Ec. Club 2. **McCollum, Mary Joyce** ("M.J."): Scribblers 3,4; French Club 2; History Club 3; Gens Togata 3; G.A.A. 1,2,3,4; Archery 1; Bulls Eye Club 1; Hockey 2,3,4; Basketball 1,2,3,4; Volleyball 1,2,3,4; Baseball 1,2,3,4; Annual Lit. Staff 3,4. **McCormick, John Lucian** ("Louiggi"): Rifle Club 2,3; Kappa.

Row 3—McFee, Norma Ann ("Mickey"): Spanish Club 1,2,3; Junior Choir 2; Girls' Glee Club 3,4; G.A.A. 1,2,3,4; Archery Mgr. 4; Tennis Club 2; Individual Sports 1,2,3,4; Annual Rep. 2,3; Annual Ad Staff 3,4; E.O.X. **McGoron, James Albert** ("Mac"): T.S. **McHugh, Peggy Ann** ("Peg"): Future Merchandisers 4; Volleyball 1,2; Bowling 1.

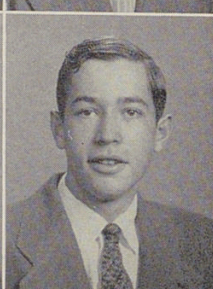
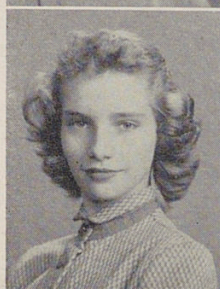
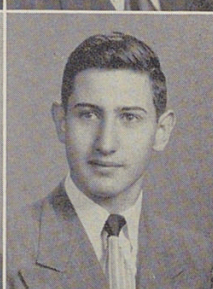
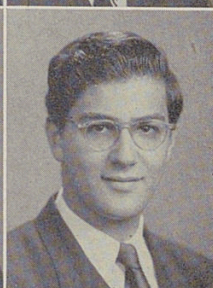
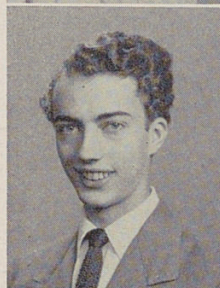
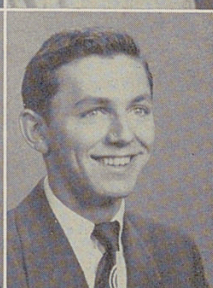
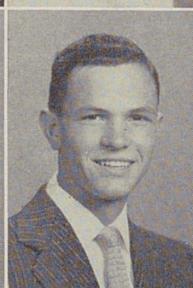
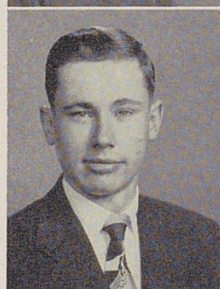
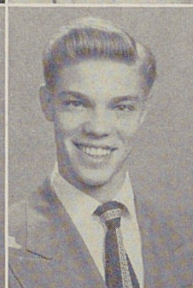
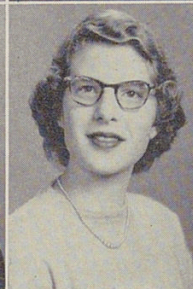
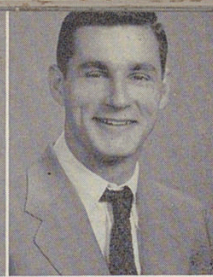
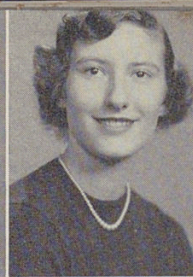
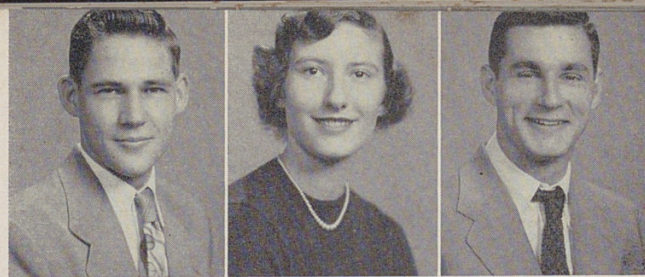
Row 4—McKee, Richard Edwin ("Ed"): Senior Choir 2,3,4; Madrigal 4; Boys' Glee Club 3,4; Minstrels 2,3,4; Rifle Club 2; Savings Stamp Rep. 1,2. **McKeon, Nancy Lee** ("Nance"): Gens Togata 2,3; Greek Club 1; Literas 1; Lunchroom 3,4; C.L.C. **McKinley, Bette Ann**: Entered Withrow in Sophomore year from Hillsdale School; French Club 3,4; Gens Togata 2; Scribblers 4; Minstrels 2,3,4; Tennis Club 2,3,4; G.A.A. 4; A.B.K., Treas. 4.

Row 5—Mealy, Valerie Ann ("Skipper"): Home Ec. Club 2; Badminton 3; Archery 3; Tower News Rep. 2; T.N.T., Corr. Sec. 3. **McVicker, Norman Westfall**: Spanish Club 2; Beta Chi 4; Minstrels; Thalian 4; Beta Hi-Y; Chi Sig. **Messemer, Ronald John** ("Messmo"): Football 1,2; Baseball 3,4; Tower News Rep. 2; Iota.

Row 6—Meyer, Donald Elmer ("Don"): Iota. **Milam, Barbara Jean** ("Barb"): Girls' Glee Club 1,2; Annual Lit. Staff 2. **Miller, Allan Millard** ("Al"): Tenth Grade Choir 2; Junior Choir 2; Boys' Glee Club 3,4; Minstrels 3,4; Annual Rep. 2.

Row 7—Miller, Ann Ruth: Beta Chi 4; G.A.A. 1,2,3,4; Hockey 1,2,3,4; Hiking 1,2, Mgr. 3,4; Volleyball 1,2,3,4; Dolphin Club 3,4; Basketball 1,2,3,4; Baseball 2,3,4; Individual Sports, 2,3,4; Tennis 2,3,4; Tower News 1; Savings Stamp Rep. 2. **Miller, Charlotte** ("Char"): Gens Togata 2,3; Minstrels 1,2,3,4; G.A.A. 1,2,3,4; Hockey 1,2,3,4; Volleyball 1,2,3,4; Basketball 1,2,3,4; Baseball 1,2,3,4; Individual Sports 2,3,4; Hiking Club 4; Dolphin Club 3; Dance Club 2; Savings Stamp Rep. 1; Z.B.K. Corr. Sec. 4. **Miller, Steve Benjamin** ("Benny"): Entered Withrow in Senior year from Anderson; Band 4.

Row 8—Mills, Florene: G.A.A. 1; Bowling 1,4; Volleyball 1,2; Baseball 2; Hockey 1. **Mills, Mildred Allene** ("Millie"): Beta Chi 2,4; Home Ec. Club 3,4; Band 1; G.A.A. 4; Tower Y 4. **Minning, George Thomas**.



at last! their awaited year