



Row 1—**Othling, June Claire** ("Junie"): Gens Togata 1,2; Spanish Club 3,4; Girls' Glee Club 3,4; Presentation Orchestra 3,4; G.A.A. 3,4; Thalian 3,4; E.O.X. **Pappas, Louis**: Chi Sig. **Parker, Charles William** ("Butch"): Senior Choir, Mgr. 4; Minstrels 2,3,4; Track 1; Football 1,2; Withrow Players 3,4; Senior Council; Projection Crew 2,3; Interfraternity Council, Pres. 4; Iota, Pres. 4.

Row 2—**Parker, Shirley Rae** ("Shirl"): Beta Chi 2,3,4; Home Ec. Club 1,2,3,4; G.A.A. 3. **Patrick, Mary** ("Mimi"): Beta Chi 2; Home Ec. Club 1,2; Lunchroom 3,4. **Peagler, Jesselean** ("J.L.P."): Beta Chi 2; Home Ec. Club 2; Junior Choir 2; Girls' Glee Club 2; Tower News Rep. 2.

Row 3—**Peebles, Gordon**: Entered Withrow in Junior year from Deer Park; Junior Choir 3; Annual Art Staff 4; B.T.O. **Pennington, Bobbie Marie**: Entered Withrow in Sophomore year from Lincoln. **Perrino, Minnie Carmella** ("Min"): Home Ec. Club 4; G.A.A. 1,2,4; Volleyball 1,2,3,4; Baseball 3,4.

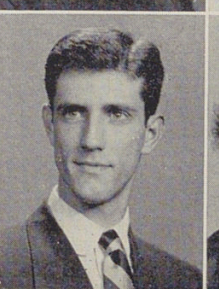
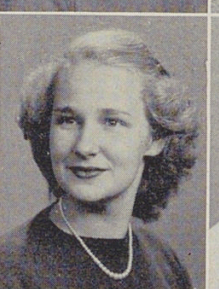
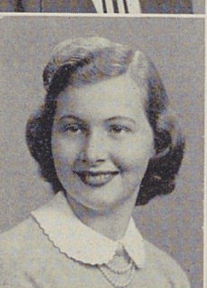
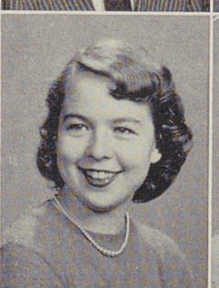
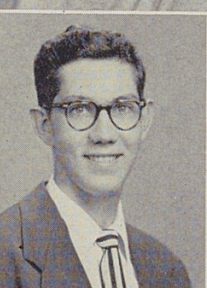
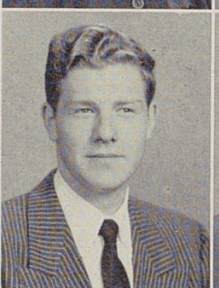
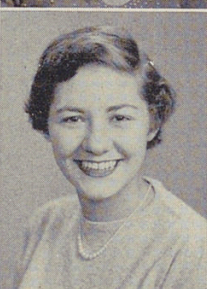
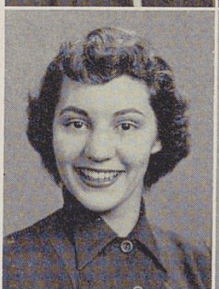
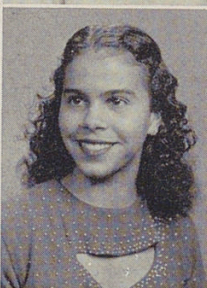
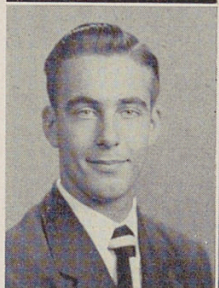
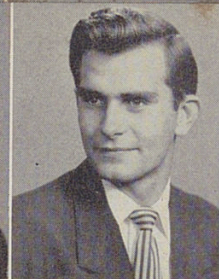
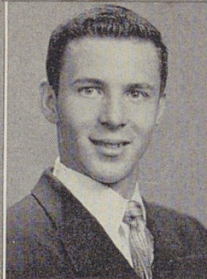
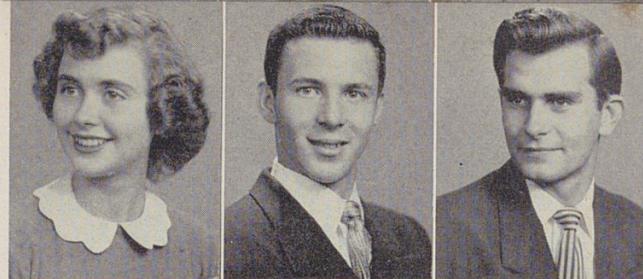
Row 4—**Peters, Sherry**: Spanish Club 2,3, Rec. Sec. 4; Minstrels 4; Tennis Club 1,2,3,4; Dolphin Club 2,3,4; Interfraternity Council 3; A.B.K. Cor. Sec. 4. **Pfiester, Joann** ("Joy"): Home Ec. Club 3; Gens Togata 4; Junior Choir 2; Girls' Glee Club 3; Minstrels 2,3,4; G.A.A. 1,2,3,4; Volleyball 1; Baseball 2; Individual Sports 2; Dolphin Club 2,3,4; Bowling 1; Tennis Club 2; Thalian 4; Tower News Ad Staff 2,3; Annual Rep. 3; Kytives; Historian 3; Pres. 4; Interfraternity Council 3,4. **Phillips, Jeannette** ("Jenny"): Entered Withrow in Junior year from Hughes; Home Ec Club 4; T.N.T.; Iyettes; Interfraternity Council 4.

Row 5—**Phillips, George Henry** ("Cyclops"): Basketball 1; Golf 1,2; Iota. **Philipps, August Martin** ("Bud"): Junior Choir 2,3; Boys' Glee Club 4; Minstrels 4. **Pierce, Shirley Mae**: Beta Chi 3,4; G.A.A. 3,4; Baseball 3; Bowling 4; C.L.C.

Row 6—**Pinson, Agnes Belle** ("Aggie"): Entered Withrow in Senior year from Sylvester, Georgia; Scribblers 4; Thalian 4; Tower News 4; Kytives. **Platt, Carolyn Rose** ("Cissie"): French Club 2,3; Pres. 4; Senior Choir 2,3,4; Minstrels 2,3,4; Volleyball 1; Annual Lit. Staff 3, Co-Editor 4; Tower News Rep. 3; Alpha -Y 1; Z.B.K., Pres. 4; Interfraternity Council 4. **Polder, Juanita**.

Row 7—**Portner, Florae** ("Flo"): G.A.A. 3,4; Basketball 3; Volleyball 3; Bowling 3,4; C.L.C., Vice-Pres. 4. **Prechtl, Sylvanna Theresia**: Entered Withrow in Sophomore year from Hughes; Spanish Club 2,3, 4; German Club 3,4; Junior Choir 3; Girls' Glee Club 4. **Preston, Audrey** ("Audie"): Future Merchandisers 4; Spanish Club 1,2,3; Minstrels 3; G.A.A. 1,2,3; Archery 1,2,3; Basketball 1,2; Volleyball 1; Baseball 2; Tennis Club 2; Annual Art Staff 3; E.O.X.

Row 8—**Price, Donald Dean**: Boys' Glee Club 1,2,3; Senior Choir 3,4; Minstrels 1,2,3,4; Thalian 3, Pres. 4; Annual Rep. 1,2; Tower News Rep. 2, Tower News 2,3; Pep Squad 4; T.O., Vice Pres. 3, Pres. 4. **Price, Mabel Janet**: Entered Withrow in Junior year from Terrace Park; Home Ec. Club 4; T.N.T. **Price, Patricia** ("Pat"): Dance Club 1; Tennis Club 3,4; Volleyball 3; Individual Sports 2; Alpha Y 3,4; Kytives.



to see, and plans to make;