



Row 1—Sachs, Michael ("Mike"): Football 1. **Sanders, Bruenetta**: Entered Withrow in Senior year from Hughes High School. **Sandusky, June Fay**: Home Ec. Club 4; G.A.A. 1; B.O.X.

Row 2—Sandige, Annie Louise ("Ann"): Tower-Y 4. **Sanza, Carmella** ("Curts"): Beta Chi 2; Home Ec. Club 2; G.A.A. 1; Volleyball 1,2,3; Baseball 2; Bowling 3. **Schlottman, Mary Lou** ("Lou"): Baseball 2; Volley Ball 2; Z.B.K.

Row 3—Schmidt, Betty Jane ("Beanie"): Home Ec. Club 1,2; History Club 2,3,4; Spanish Club 4; Physics Club 3; G.A.A. 2,4; Hockey 1,3; Volleyball 2,3,4; Basketball 2,4; Baseball 2,4; Tower News 2, Assistant Editor First Page 3, Co-Editor First Page 4; Tower News Rep. 3. **Schoolfeld, Bruce William** ("Scho"): Football 2,3,4; Basketball Mgr. 2,3,4; Tiger Club 3,4. **Schubert, Joyce Ruth** ("Schubie"): French Club 3,4; Gens Togata 1,2; G.A.A. 1,2,4; Dance Club 1,2,3; Volleyball 3,4; Baseball 3,4; Bowling 4; Archery 4; Altruist, Sec. 4.

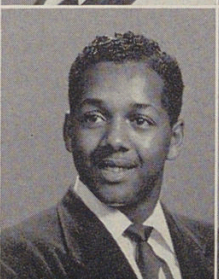
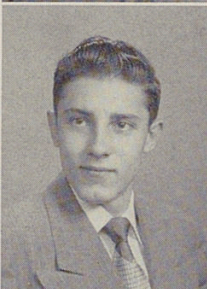
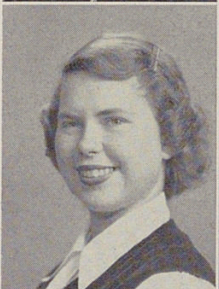
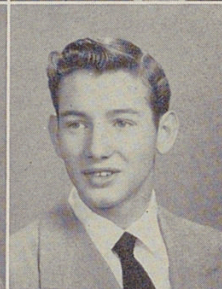
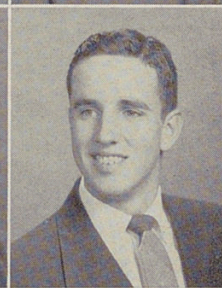
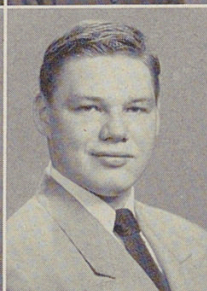
Row 4—Schuster, Carole Elizabeth: Home Ec. Club 4; Volleyball 1,2,3; Tennis 2; Archery 2; Badminton 2; Pep Squad 3; Aliquippa, Sec. 4. **Schweitzer, Carl Gordon** ("Schweitz"): Band 1,2,3,4; Orchestra 1,2,3,4; Presentation Orchestra 1,2,3,4; Minstrels 1,2,3,4; Bowling 1,2. **Schwietert, Bernice Ann** ("Necce")

Row 5—Scott, Pauline ("Patty"): History Club 2,3. **Seilkop, Shirley Jeanne** ("Beanie"): Literatas 1, Treas. 2; Scribblers 3,4; Gens Togata 1,2,3,4; Beta Chi 4; Band 1,2,3,4; Presentation Orchestra 3,4; Minstrels 3,4; G.A.A. 2,3,4; Tennis Club 1; Annual Lit. Staff 3; Annual Rep. 1; Alpha-Y 1. **Shafer, William Coatesworth** ("Shaf"): Senior Class Pres.; Sigma Gamma; Gens Togata 1,2,3; Senior Choir 2,3,4; Alpha Hi-Y 4; Senior Council; Tri Chi, Sgt.-at-Arms 4.

Row 6—Shearwood, Carol Naomi ("Me"): Beta Chi 4; Nature Club 2; Hockey 1; Basketball 2; Baseball 2; Volleyball 2; Tennis Club 2; Bowling 3; Tower News Rep. 4; Camera Club 1; Savings Stamp Rep. 2; Junior Red Cross Club 4; Pep Squad 4; Alpha-Y 1; Tower-Y 4. **Shepler, Marilyn Ruth** ("Shep"): Dux Femina, Sec.; Spanish Club 1,2,3,4; Junior Choir 2; G.A.A. 1,2,3, Treas. 4; Volleyball 1,2,3, Mgr. 4; Baseball 1,2,3,4; Basketball 2; Individual Sports 1,2,3,4; Annual Rep. 2,3; Alpha-Y 1; Kytives. **Shifflet, Neville Earl** ("Nick"): Annual Lit. Staff 2; T.O.

Row 7—Shockley, Nancy Jean ("Peanut"): Orchestra 3,4; Band 2,3,4; Minstrels 1,2,3,4; Tennis Club 3,4; Withrow Players 4; Tower News 2,3,4; A.B.K. **Sies, Lloyd Eugene** ("Breezy"): Entered Withrow in Junior year from Central Vocational High School; Junior Choir 3; Boys' Glee Club 4; Minstrels 4. **Simmons, Margaret Ruth** ("Honey"): Dux Femina; Gens Togata 2,3; French Club 3, Sec. 4; Scribblers 3, Corr. Sec. 4; History Club 4; Senior Choir 3,4; Robe Committee 3,4; Madrigal 3,4; Minstrels 2,3,4; G.A.A. 1,2,3,4; Swimming 1,2,3; Mgr. 4; Dolphin Club 2,3, Pres. 4; Hockey 1,2; Volleyball 1,2,3; Basketball 1,2,3; Baseball 1; Annual Lit. Staff 2; Tower News 2,3, Third Page Editor 4; Savings Stamp Rep. 1,2; Altruist, Treas. 4.

Row 8—Simpson, Charles Pickel ("Sonny"): **Simpson, Janet Aleen**: Spanish Club 2; Beta Chi 3,4; Home Ec. Club 3,4; History Club 4; G.A.A. 3,4; Hockey 1; Volleyball 2,3,4; Baseball 3,4; Shuffleboard 3,4; Table Tennis 3; Archery 4; Tennis Club 1,2,3; Red Cross Club 4; Tower-Y, Sec. 4. **Shroyer, Vera Estelle** ("Vee"): Beta Chi 3; Home Ec. Club 2,3, Pres. 4; Junior Choir 3.



and home a refueling post.