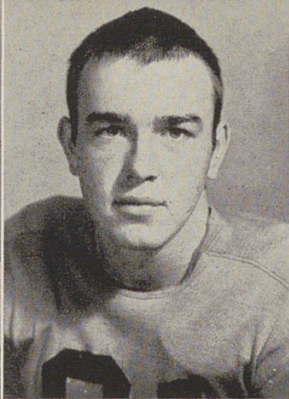
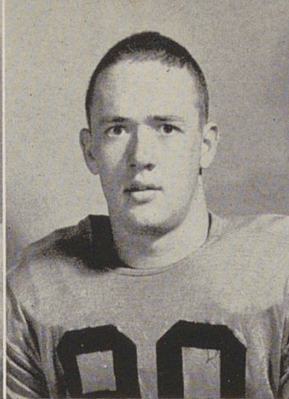


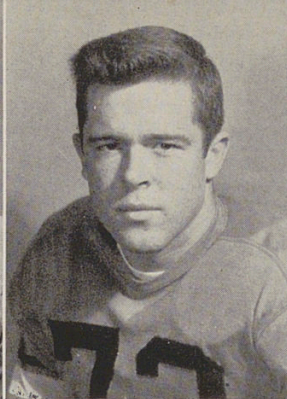
RON LYONS — HB—
5-11 — 170—Sr. a rug-
ged tackler and defen-
sive back — also chalk-
ed up 6 pts.



DON ROGERS — C —
6-1—190 — Sr.— out of
Honorary Captain —
hard - working , bulwark
of line — All-City



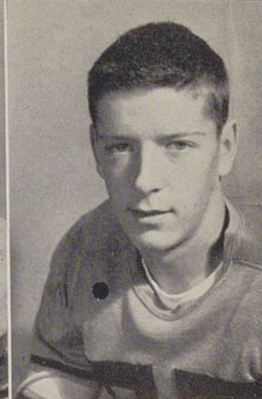
DON ROGERS — C
—6-1—190—Sr.—out of
action due to head in-
jury — always with
team in spirit



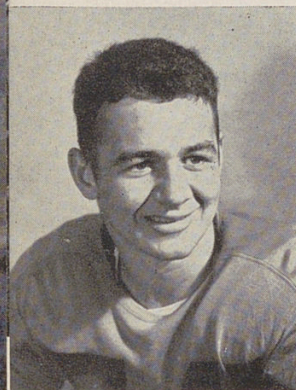
BILL HOLLOMAN — E
— 5-10 — 175 — Sr. —
Co - captain — very
quick — good pass re-
ceiver — rang up 13
pts.



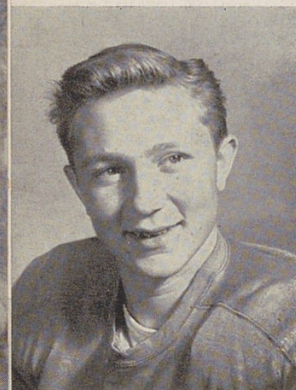
BOB GLENN — HB—
5-8 — 165 — Sr. —
good pass receiver and
kicker — injured and
out most of year



JERRY HENDRIXSON
— G—5-9—165 — Sr.
— consistent performer
— underwent mid-sea-
son appendectomy



HARVEY VAUGHN —
E — 5-11 — 175 —
Jr. — fine blocker —
gained valuable expe-
rience — scored 6 pts.



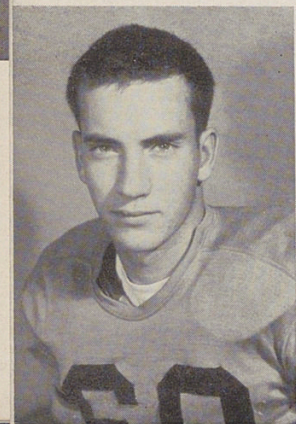
JIM UPSON — G —
5-7 — 165 — Jr. —
likeable Jim gained val-
uable experience —
good prospect for '51

Not Pictured:
BOB BARNETT — HB
— 6 — 175 — Jr. —
strong and aggressive
— scored 12 pts. aver-
aging 5.4 yds. try

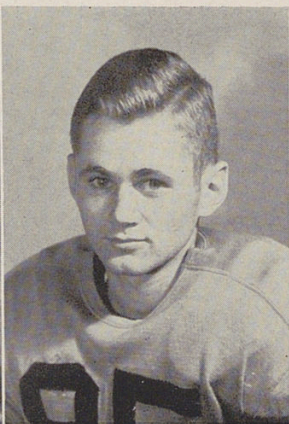
a game demanding both physical prowess



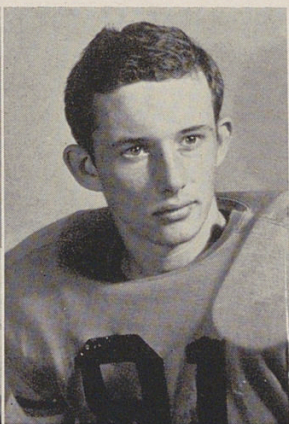
CHARLES BRANDEN-
BURG — QB — 6
— 170 — Sr. — excel-
lent ball handler and
passer—booted 19 pts.



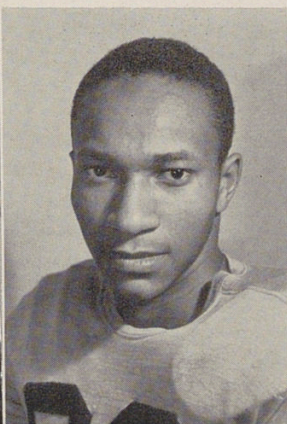
RON WITHERBY — E
— 6 — 165 — Sr. —
very fast flanker —
used often on end-
around — tallied 6 pts.



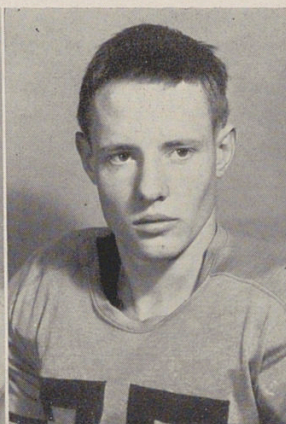
BOB BARBEAU — T
— 6—190 — Sr.—effi-
cient blocker — turned
in consistently good per-
formances



IRV TURNER — FB —
5-8 — 165 — Sr. —
extremely fast — aver-
aged 8.4 yds. / carry
and tallied 24 pts.



KIRT ROCKEL — G—
5-6 — 140 — Sr. —
team player — empha-
tic example of hard
work and determination



BRUCE SCHOOLFIELD
— T — 5-11 — 205 —
Sr. — injured most of
season — a very
staunch, game lineman

