

BILL MARKEL — T — 6
— 185 — Sr. — braw-
ny, rugged gridder —
constantly gave oppon-
ents a rough time

JERRY SCHOONOVER
— FB — 6 — 180 —
Jr. — converted tackle
— scored 36 pts. —
averaged 4.9 yds./try

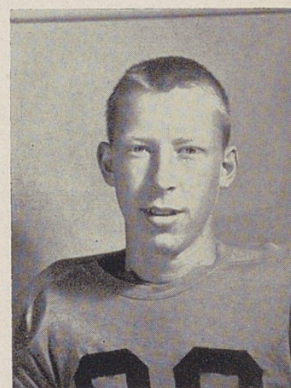
NICK NEIDICH — G
— 5-8 — 150 — Sr. —
small but rough — ef-
ficient blocker — had
a good senior year

BILL ANSHUTZ — G
— 5-11 — 210 — Sr.
— big, very hard to
move — one of the
better defensive line-
men

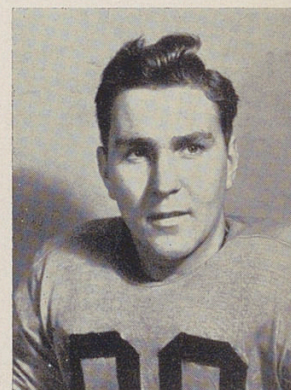
DAVE HAERR — G —
5-8 — 170 — Sr. —
sincere, hard working,
offensive lineman — un-
derstudy to Leonard

GENE BURRELL — E
— 5-11 — 170 — Sr.
— transfer from Ander-
son — especially good
downfield blocker

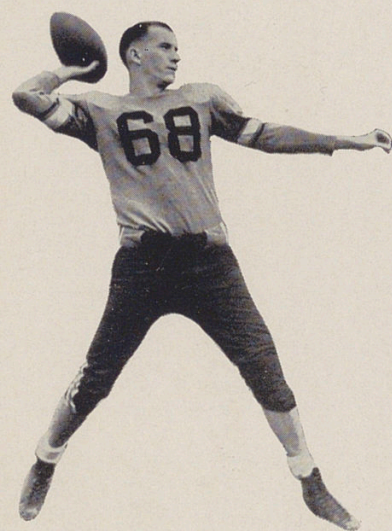
Not Pictured:
DICK MILLER — HB—
5-8 — 165 — Jr. — ex-
ceptionally quick-mov-
ing halfback — regist-
ered 18 pts.



DAVE PLUNKETT — E
— 6-6 — 198 Jr. —
starting wingman — in-
jured in practice, out
most of season



TED NICOLA — G —
5-8 — 165 — Sr. —
perseverant — team
player—used at guard,
tackle, and center



ORDON McNEIL —
— 5-9 — 175 —
soph. — showed real
promise — one of those
most likely to succeed

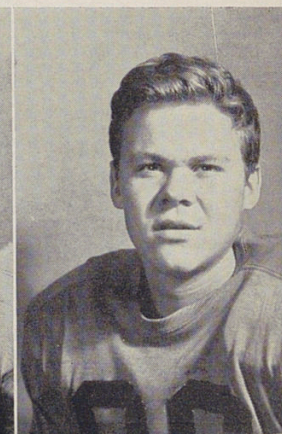
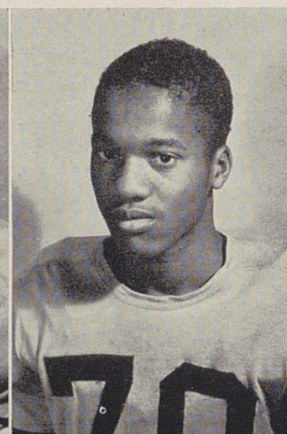
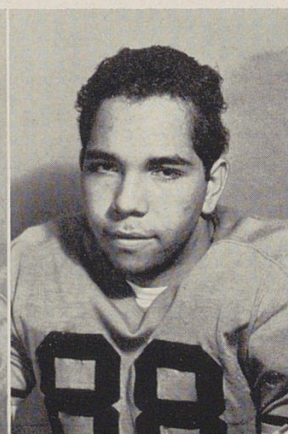
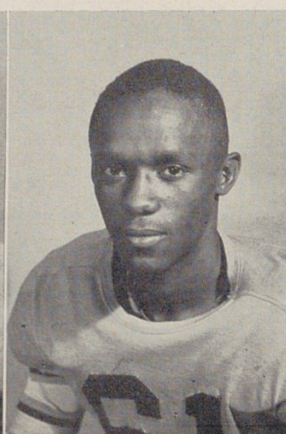
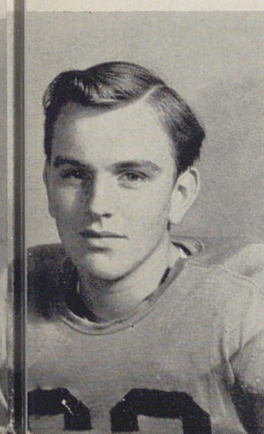
LEON MACKLIN—HB
— 5-8 — 140 — Sr.
— most valuable —
scored 72 pts. and av-
eraged 12.3 yds./car-

JIM WILSON — T —
6 — 190 — Sr. —
capable member of
forward wall — one of
the quickest big players

ELDON GREEN — G
— 5-7 — 170 — Sr. —
very steady and un-
swerving Tiger lineman
— exceptionally fast

TED CARTER — QB —
5-9 — 155 — Jr. —
has large hands — ac-
curate tosser — also
totes pigskin well

DON CURRENS — C
— 5-11 — 190 — Soph.
— only soph starter —
fast for big lineman —
very aggressive



and mental alertness, this robust sport is