

Row 1—Heffner, Margaret Susan "Peggy": Home Ec. Club 3,4. Heinz, Joyce Marie: Tennis Club 1. Henderson, Carolyn.

Row 2—Henderson, Jacqueline Marlene "Jackie": Home Ec. Club 4; Beta Chi 4; Spanish Club 2,4; Alpha-Y 1. Herschelman, Betty Jane: Band 1,2,3,4; Presentation Orch. 2,3,4; Minstrels 1,2,3,4; G.A.A. 1,2,3,4; Volleyball 2,3,4; Basketball 1,2,3,4; Baseball 1; Dance Club 1,2,3; Pres. 4; Tennis Club 2,3; Withrow Players 2,3, Vice-Pres. 4; Tower News Rep. 2; Altruist, Treas. 4. Hersh, Margery Ann: Spanish Club 3,4; Home Ec. Club; Minstrels 2; G.A.A. 1,2; Hockey 1,2; Volleyball 1,2,3; Baseball 1,2; Basketball 1,2,3; Tennis Club 1,4; Tower News 2,4; Camera Club 4; Alpha-Y 1; E.O.X., Sgt.-at-Arms.

Row 3—Hermann, Jean: Minstrels 2,3,4; G.A.A. 1,2,3,4; Volleyball 1,2,3,4; Baseball 1,2; Hockey 3,4; Basketball 2,3,4; Pep Squad 1; Tennis Club 3; Tower News 3,4; Interfraternity Council 3; A.B.K., Vice-Pres. 4. Herrmann, Kenneth Louis "Ken": German Club 1,2,3,4; Philologia 3,4; Gens Togata 3; Treas. 4; Physics Club 3; History Club 4; Minstrels 3,4; Pep Squad 1,2. Hill, Connie Mae: Gens Togata 4; Glee Club 2; Senior Choir 3,4; Minstrels 3,4; G.A.A. 4; Baseball Ref. 3,4; Shuffleboard 4; Bowling 3,4; Basketball 3,4; Baseball 3,4; Individual Sports 4; Tip Toppers 3,4.

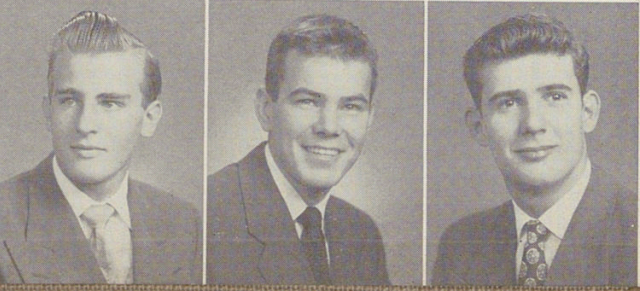
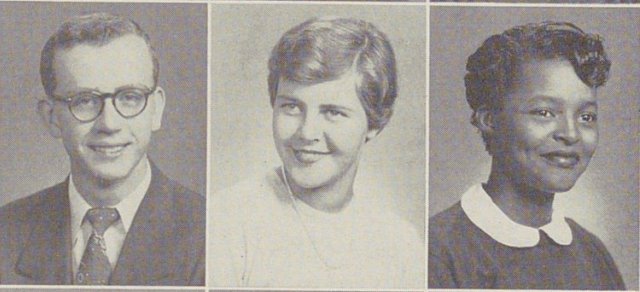
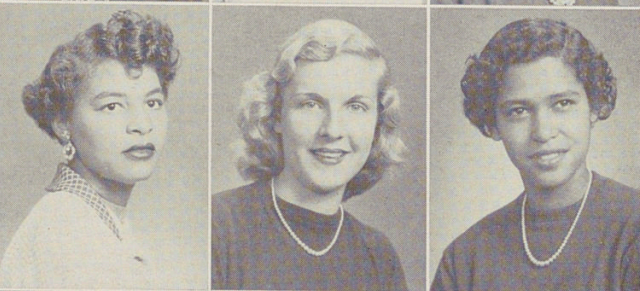
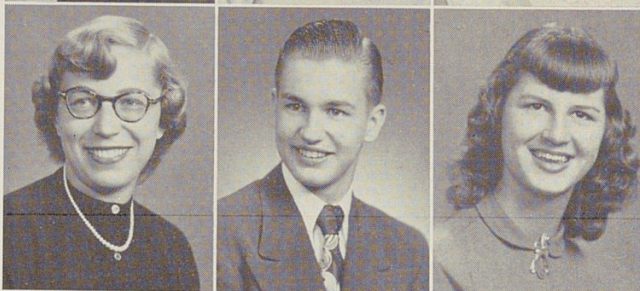
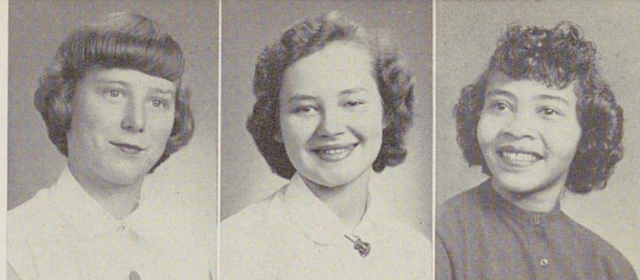
Row 4—Hill, Nellie Faye "Pins": Entered Withrow in Junior year from Norwood High; Home Ec. Club 3,4; Minstrels 3. Hillyard, Lois Estelle: G.A.A. 1,2,3; Volleyball; Thalian 3,4. Hines, Earline.

Row 5—Hofferth, Jim: Entered Withrow in Junior year from Crawfordsville, Indiana; Basketball 3,4. Hogan, Lillian Henrietta. Hohman, Ruth Edna: Spanish Club 2,3,4; Home Ec. Club 4; Minstrels 2,4; G.A.A. 1,2,3,4; Volleyball 1,2,4; Hockey 2,3; Dolphin Club 2; Dance Club 3; Tennis Club 2,3; Athletic Rep. 4; B.O.X., Treas. 4.

Row 6—Honeysuckle, Bettie Jayne. Houstler, Dorothy May "Dottie": Spanish Club 1,2; G.A.A. 1,2,3,4; Bowling Team 2,3,4; Volleyball 1,3; Baseball 1,3,4; Phi Gamma Sigma. Hargrave, Helen Judith.

Row 7—Howard, George Allan: Gens Togata 2; German Club 3,4; Physics Club 3; Minstrels 1,2,3,4; Band 1,2,3,4; Orchestra 1,2,3,4; Tri Chi. Howard, Norma Jeanne: Entered Withrow in Sophomore year from Abington, Mass.; G.A.A. 2,3,4; Dolphin Club 2,3, Pres. 4; Softball 2,3,4; Basketball 2,3,4; E.O.X., Vice-Pres. 4. Huguely, Lillian Delores "Lil": Home Ec. Club 1; Volleyball 1,2; Y-Teens 2, Treas. 3; Tip Toppers 1.

Row 8—Ignatius, John Dudley: Entered Withrow in Junior year from Anderson Twp. School. Ingram, Frank Lequellec "Lucky": Football 1,4; Basketball 1; Track 3,4; K.T.K., Vice-Pres. 4. Irvan Jack: Cross Country 3; Basketball 3.



HAS WORKED HARD TO