

Row 1—Shives, Stephanie Ann "Steph": French Club 3,4; G.A.A. 1,2,3,4; Tennis Club 1; Tower News 4; Annual Rep. 2; Tower News Rep. 4; A.B.K., Rec. Sec. 4. Showes, Thelma Jean "Duckie": Volleyball 4; Basketball 4. Sigafosse, Dick Norman.

Row 2—Sigler, Carol Phyllis "Phyl": Dux Femina; Literatas 1, Vice-Pres. 2; Scribblers 3, Corr. Sec. 4; Gens Togata 1,2,3; French Club 3,4; Physics Club 3; Minstrels 2,4; G.A.A. 1,2,3,4; Hockey 1,2,3,4; Volleyball 1,2,3, Mgr. 4; Basketball 1,2,3,4; Baseball 1,2,3,4; Individual Sports 1,2,3,4; Bowling 4; Pep Squad 2; Thalian 3; Annual Rep. 3; Tower News 2, Ass't. Third Page Editor 3, Co-Editor 4; Kityves. Silber, Ronald Earl "Ron": Philologia 3,4; German Club 2, Treas. 3,4; Rifle Club, Sec. 1,2; Pres. 3,4. Simester, Georgia Ruth "Jody": French Club 2,3, Sec. 4; Physics Club 3; Senior Choir 2,3,4; Minstrels 2,3,4; Athletic Rep. 1,2,3,4; G.A.A. 2,4; Archery 2; Individual Sports 2,3; Dolphin Club 2,4; Withrow Players 2,3,4; Tower News 2; Co-circulation Mgr. 3; Tower-Y 4; Alpha-Y, Pres. 1.

Row 3—Simpson, Eunice Jane: Beta Club 2,3,4; Minstrels 3,4; Home Ec. Club 2,3, Pres. 4; First Aid Club 3, Sec. 4; G.A.A. 2,4; Archery 3,4. Simpson, Barbara Lee "Barb": Re-entered Withrow in Senior year from St. Joseph Academy; G.A.A. 2,4; Baseball 1; Volleyball 1; Bowling 2,4. Skeel, Margaret Ruth "Margy": Gens Togata 2,3,4; Literatas 2; Physics Club 3; Home Ec. Club 4; G.A.A. 3,4; Volleyball 3,4; Baseball 3,4; Individual Sports 4; Minstrels 2,3,4; Annual Lit. Staff 4.

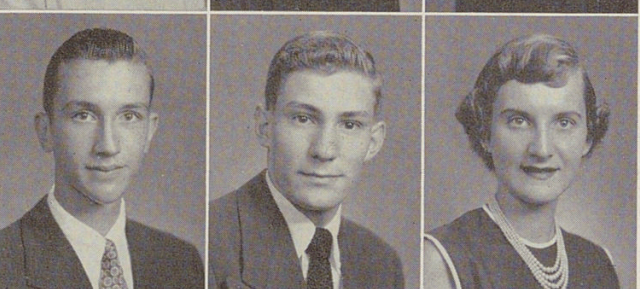
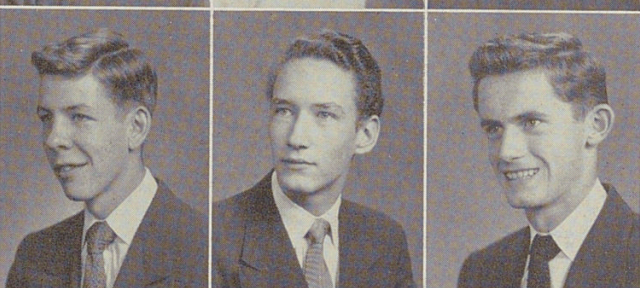
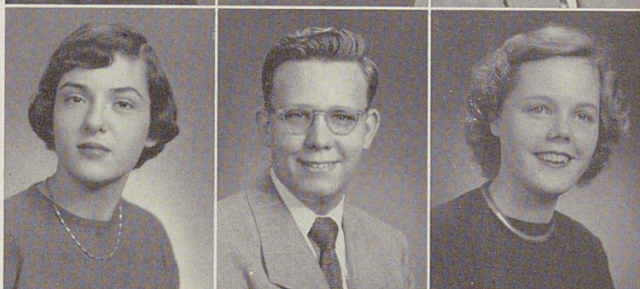
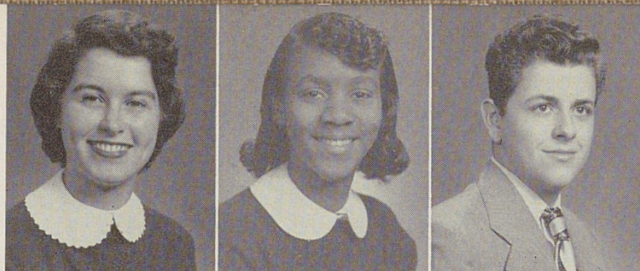
Row 4—Skaggs, Gayle: Gens Togata 2; Home Ec. Club 4; Junior Choir 3; Glee Club 4; G.A.A. 4; Bowling 3,4. Smalley, Lucy Frances: Entered Withrow in Junior year from Anderson Twp. School; Student Council 3, Chm. Finance Com. 4; Home Ec. Club 3, Treas. 4; Z.B.K. Kityves. Smith, Charlene Marie "Char": Locker Keys 1; Lunchroom 1,2,3,4; Alpha-Y 1.

Row 5—Smith, Gilbert H.: Physics Club 3; Cross Country 2; "Tiger" Pep Leader 4. Smith, Lani Kamiki: Band 1,2,3,4; Orchestra 3; Presentation Orchestra 2,3,4; Brass Ensemble 3; K.T.K. Spann, Richard Edward "Dick": Entered Withrow in Sophomore year from Dayton, Ohio; Sigma Gamma; Philologia 3,4; Tiger Club 3,4; Track 2,3,4; Basketball 3,4; Tri Chi.

Row 6—Spathelf, Sara Anne "Spatty": Spanish Club 3; G.A.A. 1,2; Basketball 3; Baseball 3,4; First Aid Club 2,3; Alpha Delta Gamma, Pres. 4. Specht, Betty Claire: Home Ec. Club 1; Future Merchandisers 4; Basketball 1,2,3; Volleyball 1,2,3; Hockey 3; Baseball 1,2,3; G.A.A.; Dolphin Club 1,2,3; Pep Squad 1. Spencer, Marilyn Ruth "Mare": Entered Withrow in Sophomore year from Western Hills High School; G.A.A. 3,4; Bowling 3,4; Baseball 3,4; Basketball 3,4; Hockey 4; Volleyball 4; Z.B.K.

Row 7—Sper, John Ronald: Entered Withrow in Junior year from Monterey, California; Spanish Club 4; Physics Club 4. Staley, Robert Landwehr "Bob": Philologia 3,4; German Club 3,4; Physics Club 3; Boys' Glee Club 2,3; Senior Choir 4; Minstrels 2,3,4; Tiger Club 3,4; Swimming Team 2,3,4. Stedam, June Catherine "Curly": Future Merchandisers; Volleyball 1,3; Baseball 1; Basketball 3; Phi Gamma Sigma.

Row 8—Steinmetz, Janet Marie "Jan": Baseball 4; Basketball 1; Alpha Delta Gamma, Vice-Pres. 3. Steinhoff, Edward "Ed": Philologia 3,4; German Club 1,2,3,4; Physics Club 3; Nature Club 1; Boys' Glee Club 2,3,4; Senior Choir 4; Minstrels 2,3,4; Tennis Club 1,3,4; Annual Rep. 3; Beta Hi-Y 4. Stempfly, Gil Lyle: Boys' Glee Club 2,3,4; Minstrels 2,3,4; Football 3.



WITHROW? WILL THEY