

Row 1—Upson, James Grigg "Uppy": Football 2,3,4; Projection Crew 1,2,3,4; Iota. Van Billiard, Ruth "Ruthie": Dux Femina; Gens Togata 1,2,3,4; Scribblers 4, Treas. 3; Physics Club 3; German Club 3, Sec. 4; Minstrels 1,2; G.A.A. 1,2,3,4; Hockey 1,2,3,4; Volleyball 1,2,3; Basketball 1,2,3; Baseball 1,2,3,4; Individual Sports 1,2,3,4; Outing Club 3,4; Pep Squad 1,2; Annual Bus. Staff 1, Co-Bus. Mgr. 2,4, Bus. Mgr. 3; Kytives, Corr. Sec. 3, Treas. 4. Veatch, Charles James "Jim": Beta Chi 1,2; Annual Bus. Staff 3,4; Reserve Football 3; Reserve Baseball 2; Treasurer's Office 4.

Row 2—Van Cleve, Jo Ann "Jo": Home Ec. Club 3,4; G.A.A. 1,2,3,4; Volleyball 2; Phi Gamma Sigma. Vaughn, Doris Elaine: Beta Chi 2, 3,4; G.A.A. 1,2,3,4; Volleyball 1,2,3,4; Basketball 1,2,3,4; Baseball 1,2, 3,4; Bowling 3,4; Tip-Toppers 2,3,4; Minstrels 3,4. Vaughn, Harvey Eugene.

Row 3—Von Bargaen, Robert John "Bob": Football 1; Cheerleader 3; Tower News 3; T.S., Vice-Pres. 4. Wade, Mary Etta: Ivyettes. Wagner, Gail Ann: Spanish Club 1,2,3,4; Alpha-Y 1.

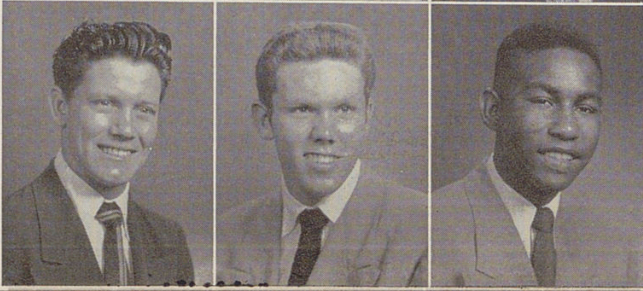
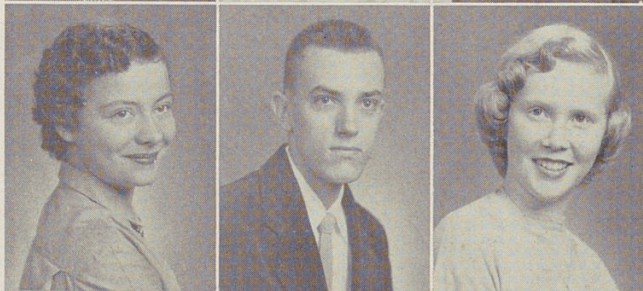
Row 4—Walling, Nancy Jean: Dux Femina; Student Council 3,4; Gens Togata 2,3; Scribblers 4; Physics Club 3; Girls' Glee Club, Librarian 2,3; Senior Choir; Minstrels 3,4; Archery 2; Volleyball 2,3, 4; Baseball 2,3,4; Basketball 2,3; Annual Lit. Staff 2,3, Co-Editor 4; Athletic Rep. 2,3,4; Dance Club 2,3, Vice-Pres. 4; Tally-Ho, Chaplain 4. Ward, Donald Lee "Don": Offset Club 3,4. Weatherford, Cheryl Lou "Sherry": Literatas 1,2; German Club 1,2,3,4; Girls' Glee Club 2; Senior Choir, Robe Mistress 3, Librarian 4; Madrigal 4; Minstrels 2,3,4; G.A.A. 1; Bowling 1; E.O.X.

Row 5—Weaver, M. Ruth "Ruthie": Home Ec. Club 4; Literatas 1,2; Volleyball 1,4; Individual Sports 2,3,4; Annual Lit. Staff 2,3; Tower News Rep. 1. Webster, Joan "Jo": History Club 2,3,4; Girls' Glee Club 2; Senior Choir 3,4; Volleyball 2,3,4; Basketball 2,4; Baseball 2,4; Archery 4; Tower News 2,3; Minstrels 3,4; Tally-Ho, Sgt.-at-Arms 3, Corr. Sec. 4. Weiss, Dick.

Row 6—Weiss, Margaret "Margie": Beta Chi 1; Spanish Club 1,2,3,4; Scribblers 3,4; Minstrels 2,3,4; G.A.A. 1,2,3,4; Volleyball 1,2,4; Basketball 1,2; Individual Sports 1,2,3; Tennis Club 3; Annual Ad. Staff 3,4; Tower News 2; Tower News Rep. 3; Tally-Ho. Wentzel, Mary Lou "Lou": Gens Togata 2,3; G.A.A. 2,4; Volleyball 1,2,4; Basketball 4; Bowling 1,2,4; Baseball 1,4. Wesselmann, Ann Virginia "Annie": Home Ec. Club 4; Band 2,3; Orchestra 3; Minstrels 2,3,4; Basketball 1,2; Baseball 1,2; Tennis Club 2; Tower News Rep. 2; B.O.X.

Row 7—Wesselmann, Maurice Joseph. Werner, Jean Carole: Gens Togata 2,3; G.A.A. 1,2,3,4; Hockey 1,2,3,4; Volleyball 2,3,4; Basketball 1,2,4; Baseball 1,2,3,4; Bowling 4; Outing Club 3,4; Individual Sports 4; Tower News 1,2,3,4; Annual Rep. 3,4; Tip-Toppers 1; Kytives. Wertheimer, Edward "Eppy": Football 1,2,3,4; Baseball 3,4.

Row 8—Wheeler, Ralph "Red": Boys' Glee Club 3; Senior Choir 4; Minstrels 3,4; B.T.O. Wilder, Eugene "Gene": Football 1; Track 1,2; T.O., Sgt.-at-Arms 3, Pledge Master 4. Wilkins, James: Entered Withrow in Sophomore year from Stowe School.



OLD ALMA MATER OR A