



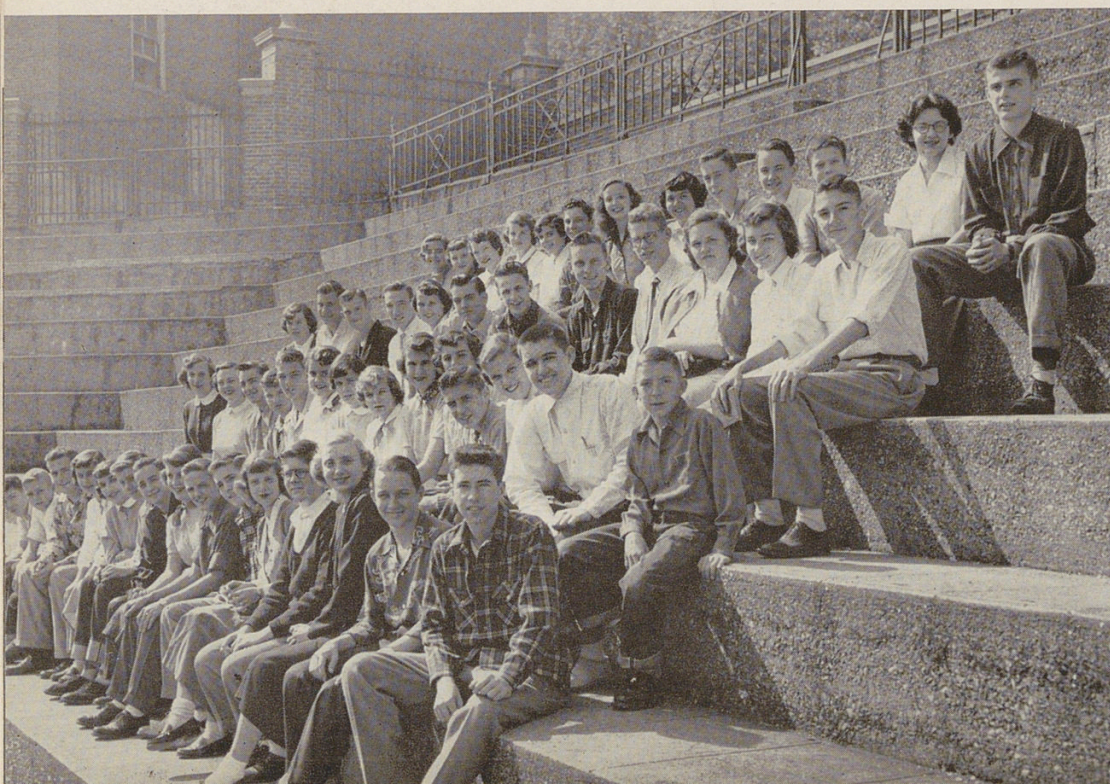
Their work looks easy but . . . Oh, the life they lead if the weekly issues fail to get to the students!

TOWER NEWS REPRESENTATIVES, Above: Row 1—C. McGrath; E. Augustine; J. DeVore; G. Reis; B. Lauderdale; D. Kruse; A. Pullem; G. St. Clair; N. Kiphart; R. Grimmer; M. Browne; N. Streit; I. Lerner; D. DeVore; L. Whitesell; R. Eden. Row 2—D. Neff; D. Lundquist; N. Wade; D. Zschau; N. Moore; G. Robbins; E. Woerner; W. Shannon; K. Hilton; P. Nelson; J. Weber; T. Schroeder; B. Noll; E. Heiser; J. Gabbard; C. Swanson; C. Good; S. Savery. Row 3—T. Boyd; T. Thompson; J. Braun; D. Agger; R. Baxter; D. Stein; J. Heuser; H. Anderson; R. Bacon; C. Woods; B. Lloyd; P. Morris; N. Currens; J. Gilbert; E. Coffman; S. Evans; F. Bodin; E. Probst. Row 4—G. Clark; J. McIntosh; B. Giles; B. Winglewish; B. Hummel; D. VanFrank; C. Stumpf; L. Ladley; J. Stimpert; E. Bartsch; J. Wilson; J. Cahall; B. Carter; D. Seilkop. Row 5—P. Krumme; R. Rippey; J. Moesta; B. Small; M. Endebrock; M. Feldhaus; R. Lane; D. Souder; C. Schuehler; V. Usher; L. Lusby; M. Goodell; A. Ferguson; S. Duquette; A. Edwards; L. Arnold; C. Finn; D. McGrath.

Two of the unheralded groups of students around Withrow which keep the school running smoothly are the **Tower News** and **Annual Representatives**. Being the immediate contact between these two publications and the student body, the representatives are directly responsible for sales and distribution. The eighty-nine Tower News representatives hold each year two subscription drives, which are extremely important to the financial success of the weekly paper. After making sales to as many students as possible, it is their job to deliver the issues to the subscribers every week. A successful annual depends a great deal on the salesmanship of its representatives, fifty-four in number. During December and January these industrious people sell yearbooks to most of the students, handle all of the Home Room accounts, and distribute the books in June to recipients.

## THE ANNUAL STAFFS

They may get a free Annual but they rise early on distribution day.



ANNUAL REPRESENTATIVES, Left: Row 1—B. Nelson; J. Johnson; J. Brucher; N. Kiphart; J. MacKenzie; P. Kyrlich; H. Davis; L. Wessinger; D. Cragg; D. Nabors; J. Allstatt; K. Fieler; C. Reinschmidt; C. Woods; D. Scott. Row 2—H. Mocker; L. Kyrlich; L. Aprile; T. Smithers; C. Masuck; M. Derrick; K. Mercer; T. Hartman; M. Klappert; J. Werner; R. Crail; N. Schrader; D. Haas; R. Van Lieu. Row 3—D. Faeter; B. Sweney; A. Popp; K. Cordes; P. Eldridge; T. Jenkins; R. Sheppard; A. Coenawein; P. Konnersmann; L. Woef; E. Fray; J. Braman. Row 4—C. Hallerman; C. Steinkuhl; C. Cooper; J. Boyer; I. Lea; D. Ridge; L. Bureson; Y. Ghory; S. Armstrong; K. Bruning; R. Wilmes; V. Wolfe; A. Schwettman.