

Row 11—Ott, Ronnie Nicholas: Sigma Gamma; Student Council 2,3,4; Tiger Club 2,3; Pres. 4; Basketball 1,2,3,4; Football 2; Baseball 1,2,3,4; K.T.K. Parker, Elaine Martha: Home Ec. Club 1; Junior Choir 1,2; Girls' Glee Club 1,2,3,4; Minstrels 1,2,3,4; Tally-Ho. Parker, Ted Glenn: Football 3,4; Track 3,4; Tiger Club 1,2,3,4; Iota, Treas. 4.

Row 12—Peck, Marlene: Home Ec. Club 4. Pelton, Ralph Leroy "Lu": Boys' Glee Club 2,3; Minstrels 2,3; Football 1,4. Penn, Walter Wesley "Walt": Football 1,2,3,4; Tiger Club 3,4.

Row 13—Perkins, Gail Anne: Entered Withrow in Senior year from Norwood High School. Petersen, Beverly Ann "Bev": Entered Withrow in Sophomore year from Western Hills High School. Home Ec. Club 2,3,4; G.A.A. 2; Red Cross Club 2,3; Theta Alpha. Petty, Mildred Jane "Janie": Entered Withrow in Sophomore year from Fresno, California. French Club 3, Treas. 4; Minstrels 2,3,4; G.A.A. 2,3,4; Hockey 2; Volleyball 2; Dance Club 2,3,4; Tennis Club 2,3,4; Withrow Players 2,3, Hist. 4; Annual Lit. Staff 2,3,4; Altruist.

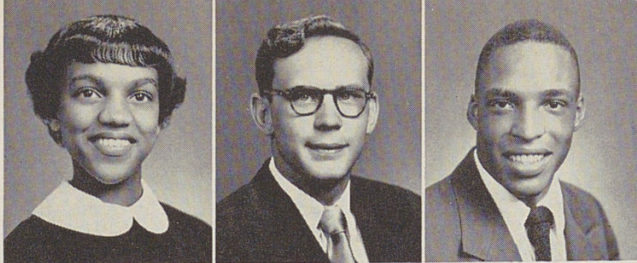
Row 14—Pieper, Carl Michael "Mike": Minstrels 2,4; Office 2,3. Poertner, Anna Mae "Ann": G.A.A. 1,2; Y-Teens 1. Poole, Anita Lowden "Neader": Entered Withrow in Junior year from Pittsburgh, Pa. Home Ec. Club 4; G.A.A. 3,4; Hockey 4; Volleyball 3,4; Basketball 3,4; Dolphin Club 3, Pres. 4; E.O.X., Treas. 4.

Row 15—Price, Don Edward. Pullin, Edward Arnold "Ed": Entered Withrow in Junior year from Youngstown, Ohio. Punkari, Mary Patricia "Pat": Entered Withrow in Junior year from Chatham, New Jersey. French Club 3,4; Home Ec. Club 3,4; G.A.A. 3; Tennis Club 3,4.

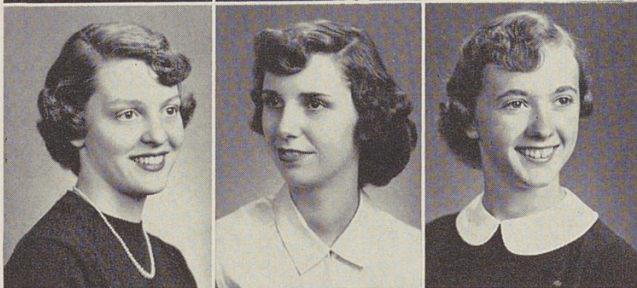
Row 16—Pyles, Lowell Trawick: Band 1,2,3; Minstrels 1; Iota, Sec. 3. Rabenstein, Carol Louise: Home Ec. Club 1; Girls' Glee Club 2,3,4; Kytives. Redd, Janette: Entered Withrow in Junior year from Versailles, Ky. Home Ec. Club 3,4.

based on their own

12



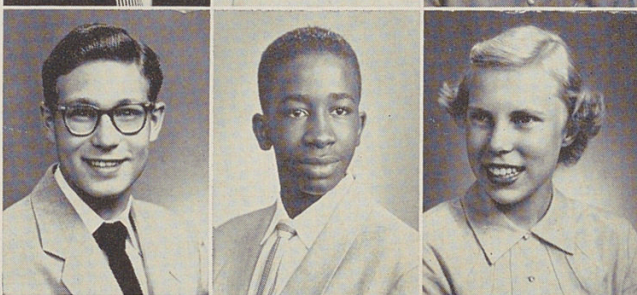
13



14



15



16

