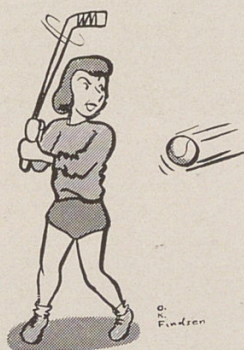




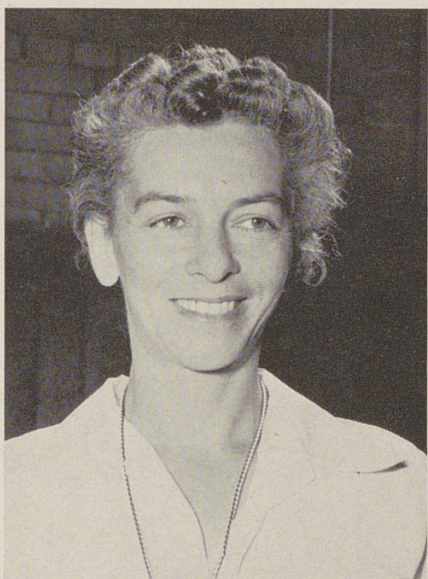
G.A.A. Managers. Foreground—C. Royal, Baseball; A. Poole, Dolphin Club; B. Duncan, Basketball; J. Fink, Volleyball; S. Usher, Bowling; H. Littmann, Hockey. Background—V. Pyles and L. Mueller, Individual Sports; P. Flaughter, Outing Club; S. Morten, Archery; V. True, Dance Club; N. Morgan, Archery.



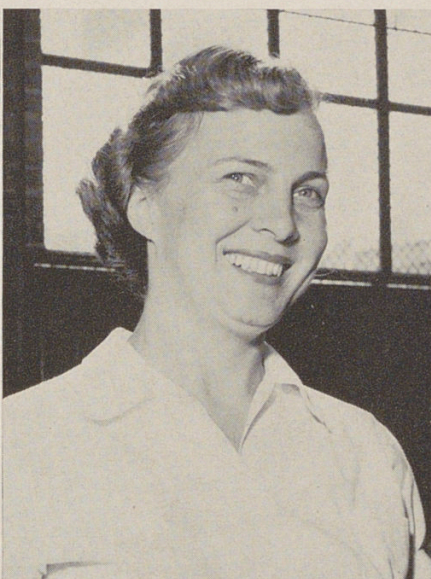
Mrs. Lally



Sauntering down the G.A.A. road, girls meet new friends and find new pathways and hidden talents. If this thoroughfare be marked off into seasonal chapters, its merry travelers will first stumble upon Autumn Avenue, where hockey attracts attention. As fall drifts away, Winter Road takes over with its volleyball and basketball until it melts into Spring Lane's baseball. Midst all these, Main Street bustles with its scores of year round sports.



Miss Blasberg



Miss Robinson



Mrs. Salwasser