

roaming over the bridge; loafing in the sun;

Top to Bottom

12. **CARR, BEVERLY JOYCE ("Bev")**: Tower Y 3,4; Alpha Y 1,2; Gens Togata 2,3,4; French Club 4; Individual Sports 3; Tennis 3; Volleyball 3; Archery 4; E.O.X.

CARR, BERTRAM REID: Beta Chi 3,4; Library 2,3,4; Stamp Club 2.

CARTER, BETTY R.: B.O.X.; G.A.A. 1,2,3,4; Volleyball 1,2,3,4; Basketball 1,2,3,4; Hockey 3,4; Individual Sports 3,4; Dance Club 3,4; Sec. 4; Literatas 1; French Club 3,4; Gens Togata 2; Tennis Club 3,4; Minstrels 3,4.

13. **CASEY, ROBERT HARRISON ("Jr.")**.

CAVAGNARO, ANITA JEAN: Withrow Players 1,2,3,4; Literatas 1; Spanish Club 3,4; Tennis Club 3,4; Minstrels 2,3,4; G.A.A. 1,2,3,4; Hockey 3,4; Volleyball 1,3,4; Basketball 3,4; Individual Sports 3,4; Tower News 3,4; Girls' Glee Club 4; Athletic Rep. 3; Dance Club 2,3,4; B.O.X.

CECIL, JEAN HELEN: Girls' Glee Club 3,4; Thalian 3,4; History Club 3,4; Savings Stamp Rep. 2; Beta Chi 4; Home Ec. Club 4.

14. **CHAMPION, NANCY BEE ("Nance")**: Tower News 2,3,4; Reporter 2; Second Page Co-Editor 3,4; Scribblers 3,4; French Club 2,3,4; Thalian 3,4; Minstrel Usher 3,4; G.A.A. 1,3,4; Tower News Rep. 2,3,4; Altruist.

CHANNELL, DOLORES LILLIAN ("Dody"): G.A.A. 2,3,4; Beta Chi 2,3,4; Camera Club 2; Minstrel Crew 4; Jr. Choir 2,3; Girls' Glee Club 4.

CHAPMON, THOMAS.

CLARK, JO CATHERINE ("Jo"): G.A.A. 2,3,4.

15. **CLEMENTS, JACK FRANK ("Gorgeous")**.

CLINGER, RITA KATHLEEN ("Reet"): G.A.A. 1,2,4; Alpha Y 1; Archery 1; Bullseye Club 1; Hockey 1.

COLE, PHYLLIS JOAN ("Jo"): Entered Withrow in Junior year from Washington Hi in Indianapolis; Tower Y 3; Vice-Pres. 4; G.A.A. 4; Basketball 4; Kytives 4.

COLLINS, MARJORIE CLARA: Girls' Glee Club 2; Beta Chi 3,4.

16. **CONNER, HELEN**: Entered Withrow in Sophomore year from Terrace Park; Gens Togata 2; Beta Chi 3,4; Basketball 3,4; Annual Literary 4; Savings Stamp Rep. 3; Volleyball 3.

CONSTABLE, ALBERTA REBECCA ("Mickey").

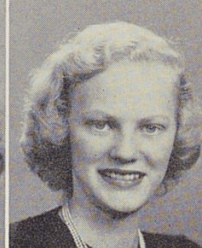
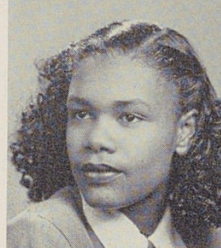
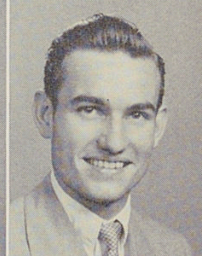
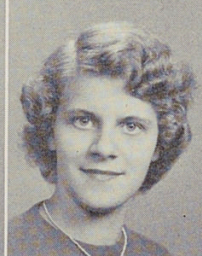
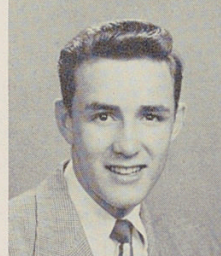
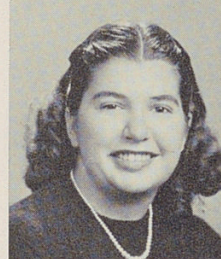
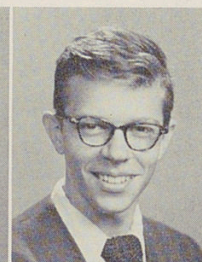
COPELIN, HOWARD LEE.

CORDES, RHETA MAE ("Reet"): Annual Rep. 1; Girls' Glee Club 2,3; Bowling 4; Basketball 4; G.A.A. 4; B.O.X.

14

15

16



9

10

11

12

13

