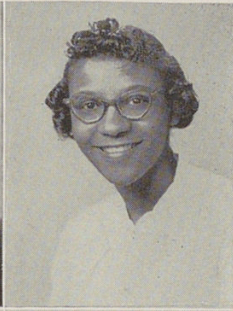
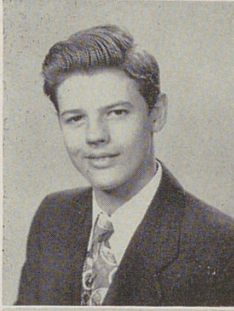


Seniors

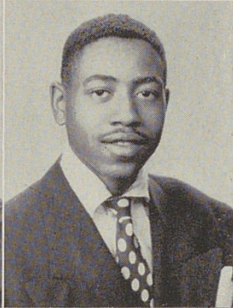
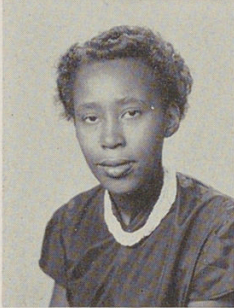


SMITH, CURTISS

Curtiss is an enterprising boy with ambitions. We hope he really will be a smart business man.

SMITH, JOAN CAROL

Choir, Biology Club.
Joan's lovely voice is quite an asset to Woodward's choir. At this point she's wandering about in a pink cloud. How about it, Joan?

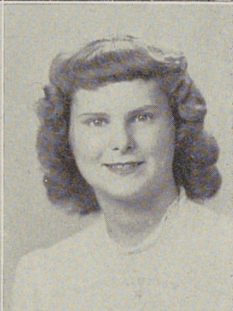
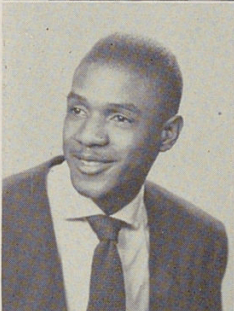


SMITH, THERESA

Theresa is a newcomer but she has acquired many friends since her arrival. She's a dependable girl.

SMITH, WELTON

Alpha Hi-Y.
Welton is quiet — sometimes. He's a sharp dresser and has a smooth personality, a real friend and very popular.

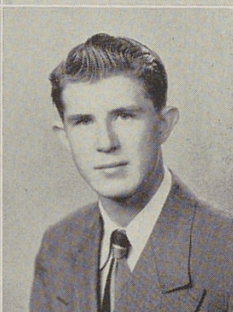
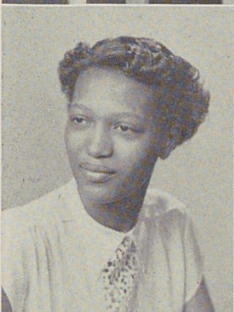


SOFER, JOHN

Track, Gym Team.
A gentleman and a gymnast, John is a good athlete and an excellent friend and is well-liked by everyone.

SOMMER, PAULINE

Co-op.
Pauline is an attractive, ambitious girl. Her vim and enthusiasm are a constant source of amazement to her friends. Always on the ball.

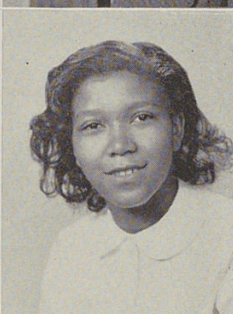
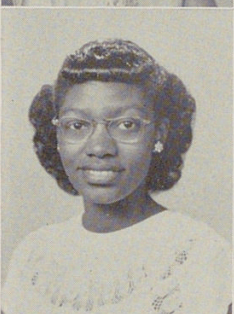


SPEARS, SARA

G. A. A., American Problems Club.
Sara is a very quiet girl and a hard worker. Whenever you find yourself within her company, every moment will be without regret.

STAPLETON, GENE

Band, Public Speaking, Bulldog Staff.
One of Woodward's contributions to the ministry. Gene can usually be found reading a book at the Grant Branch Library, where he works. Most Woodwardites know "Pretzel" from seeing him play trumpet in the band.

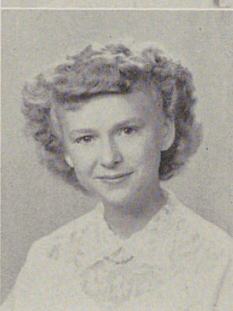
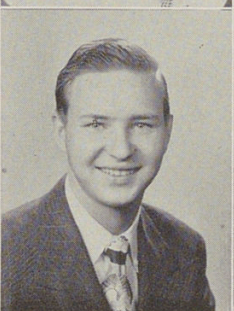


STEELE, DORIS

Band, Choir, G. S. W., Iota Honor Club.
Doris is a real wizard at the piano. She gives unstintingly of her time and energy to play for the choir or any other group which asks her.

STAYHORNE, SADIE

Tap Dancing.
Sadie is quiet and well-liked as one can tell from her many friends. Take a bow, Sadie, for being a fine friend.



SUHR, GEORGE

Cincinnati is going to have another fine Certified Public Accountant if George realizes his ambition. Good luck, George!

SURRITT, BETTY

Secretary of Student Council, Treas. of G. A. A., Kappa Honor Club.
Betty's clothes prove that she is a clever seamstress, and her manner proves she is a friend and an asset to the senior class.