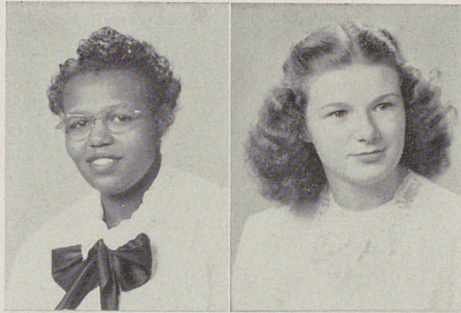
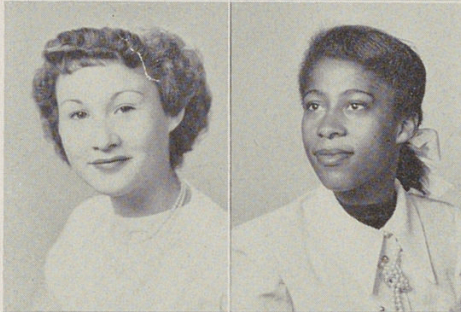


Seniors



TURNER, ANNA LEE

Choir, Public Speaking.
Anna Lee has a merry smile and a friendly manner. It's no secret that she is in on all the fun and frolic going.



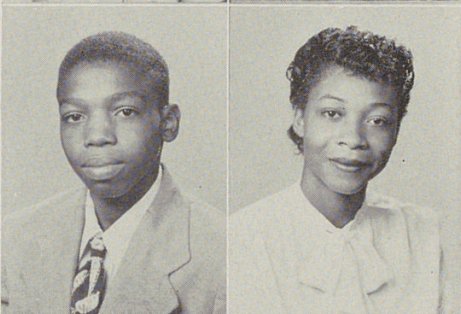
TYREE, CHRISTENE

Co-op, Y-Teens.
If you want the answer to a question before it is asked, just see Christine. She's amazing!



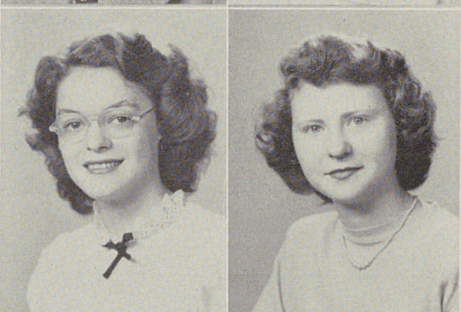
UPSHAW, MATTIE

Mattie is one of the brightest spots in the sixth period study hall. She's one pupil who can be depended upon to be quiet, courteous and hard working.



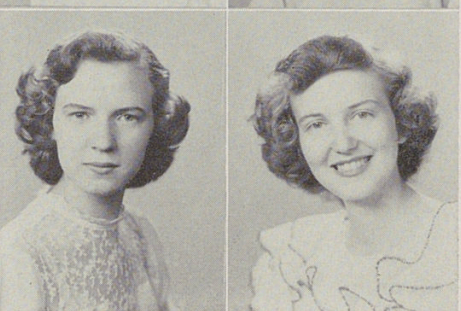
WALKER, WILLIE

Theta Honor Club, Chess Club, Latin Club.
Willie has a keen sense of humor together with a quick mind and a friendly personality. We hope Miss Anthony can find somebody in Latin II next year who can take teasing as well as Willie.



WALLACE, MYRTLE

Pres. Senior Secretarial Club, Rec. Sec. of G. A. A., Kappa Honor Club, Cheerleader.
Myrtle is one of the most active girls at Woodward. Whether it's sports, clubs or just plain "helping" you'll find "Myrt" there, overflowing with pep and energy. She's a fine, dependable worker.



WATKINS, SANDRA

Co-op, Y-Teens.
Although many people think Sandra is quiet, her shy appearance is deceiving. She's gay and charming and fun to be with.

TYLER, GENEVA MAE

Tap Dancing, Janie Y-Teens, Physiology Club, Biology Club.
Don't call her "Red" if you value your life. At least that's what she says. If you're feeling quite brave you might try it and see what happens.

TWYMAN, MARIE

Public Speaking, Choir, Botany Club, Sr. Phi Oser.
Marie is always very smartly dressed. She is very quiet in class unless she is among her friends, then the only one you can hear is Marie.

VICE, RICHARD

Pres. of Sigma Honor Club, Lunchroom Squad, Sec. of Alpha Hi-Y, Y. C. C.
Under Richard's leadership the way was paved for the setting up of a new system of senior awards. He's strong on school spirit. Look for him at all Woodward activities.

WALKER, WINIFRED

American Problems Club, Physiology Club, Public Speaking, Ballet.
Winnie's gaiety and liveliness guarantee lots of fun to her friends. No wonder she has such a great number of them.

WARE, LUELLA

Y. C. C., American Problems Club, Ballet, Tap Dancing.
Luella is a little on the quiet side but she is fun to be with and is liked by all. She's interested in many of the clubs at Woodward.

WATT, IRENE

Y-Teens, Y. C. C.
Irene shows that "Still water runs deep". Everyone loves her quiet resourcefulness and dependability.