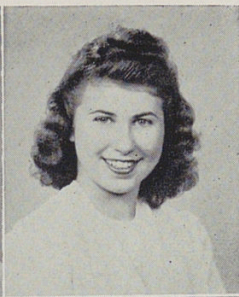


ANDERSON, MILDRED B.

Girl Reserves; G. S. W., Pres.;  
American Problems Club; Choir.  
"Always smiling. A friendly chick.  
A sharp dresser."



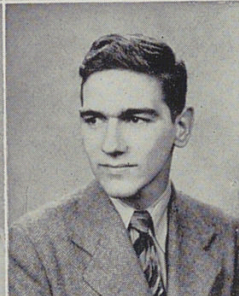
APPLEGATE, BETTY

Co-op; Woodward Boosters.  
"A very nice little girl with a  
pretty diamond ring. Awfully  
small to have turned such a big  
trick!"



BACH, BETTY JANE

Co-op; Woodward Boosters.  
"Very fond of music. Finds time  
for both work and play. It's  
wonderful if you can do it!"



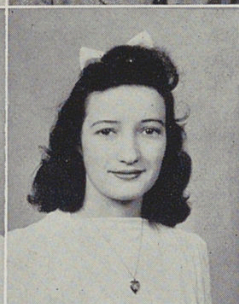
BAILEY, ERNEST P.

Band; Lunchroom Staff; Visual  
Aids.  
"Pep, vim, and vigor — that's  
Bailey. Don't mix his name with  
Daley, they're opposites. Even if  
he does get 'speedy' every once  
in a while!"



BAIRD, KATHLEEN

Woodward Boosters; Annual  
Staff.  
"Really a popular gal, especially  
among our fellows—laughing eyes  
and personality plus."



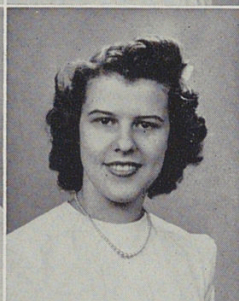
BAKER, EVELYN

"A quiet girl but she's really  
friendly for all her shy manner.  
Has a charming smile."



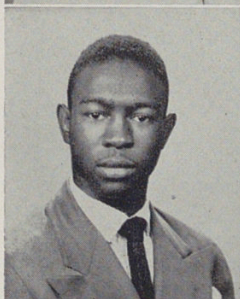
BARKELOO, LA VEEDA

"Sincere and gracious in manner  
— a diligent worker. . . . Many  
friends."



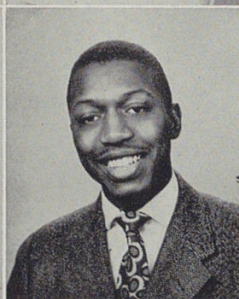
BEARD, CHARLOTTE

Secretary of the Senior Class;  
Woodward Boosters; Co-ed Club;  
American Problems Club.  
"A passion for nursing and a  
certain Marine. Pleasing person-  
ality with many friends — always  
gay and cheerful."



BEASLEY, ALFRED J.

Hi-Y; Public Speaking.  
"A real gentleman and a fine  
scholar. Kind of popular with  
the women. A wolf in sheep's  
clothing. Beats out some nice  
jive on the ivories!"



BELL, LOUIS

Hi-Y; Baseball; Volley Ball;  
Choir.  
"Slower than molasses in winter  
but he finally moved fast enough  
to get out the Senior Class! But  
he'll get along. A friendly fellow  
in his quiet way."

# Seniors

