

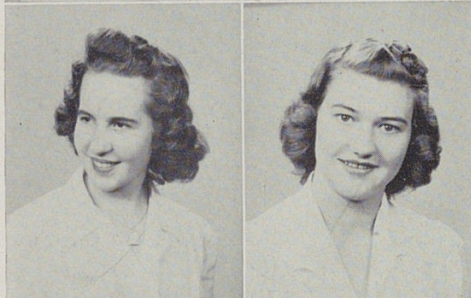
HALL, MARIE

Co-op; Rollicking Rollers; Woodward Boosters; Annual Staff.
"If you're looking for Marie, just call WO. 4040. Yes, that's Sefferino's. She spends most of her spare time there. Keeps her out of mischief — or does it?"

HARRELL, JUANITA

"A sincere friend. Always quiet, but awfully nice after you really get to know her. Her shy smile is a charming asset."

Juanita Harrell

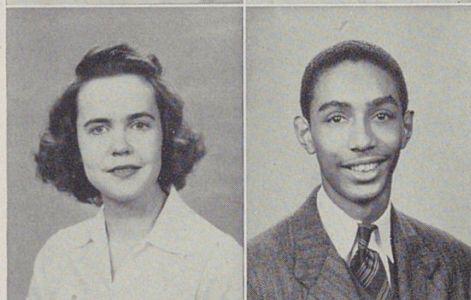


HASTELL, MARILYN

Co-op.
"One of Woodward's best athletic boosters. Could it be the early excuse? Now that would be telling!"

HENNINGER, RITA

Co-op.
"Quiet with a gentle voice. Another Bette Davis. She has ambitions, too!"

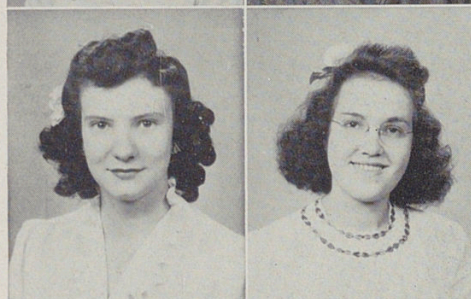


HENRY, JEWEL

Co-op.
"Nice personality. Eager to get ahead. Never a dull moment when she's around."

HERNDON, LOUIS

Camouflage; American Problems Club.
"A willing worker. Very quiet. A nice fellow to know. A true friend."



HESS, ERMA

Co-op.
"Loves to go dancing. A very hard worker. Simply loves to wear flowers in her hair. And they really do something for her. But then, maybe she does something for them!"

HESEL, CLARA H.

Choir; Glee Club; Lunchroom Staff.
"Serene and charming, interested especially in Music. Many friends."



HIBBS, MADELINE

Co-op.
"A charming girl—quiet in manner. Always sweet and cheerful."

HICKEY, MAXINE J.

G. S. W.; Spanish Club; Girl Reserves.
"Hears no evil, speaks no evil." A true friend to all; so she has many friends. A willing worker."

Seniors

