

WINBURN, ELEANOR

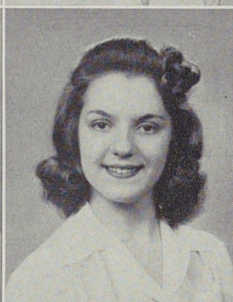
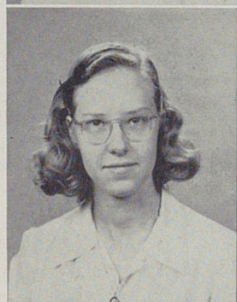
Girl Reserves; Choir; Woodward Boosters; American Problems Club.

"She's a crooner from the heart, dear Windy. At that, she's not bad. A hard worker, but she gets what she wants!"

WINNES, MARIAN

Spanish Club; Ballet.

"Beauty and brains together — always neat and gracious. A whiz in math. Always a friendly smile for everyone."



WOLF, RUTH A.

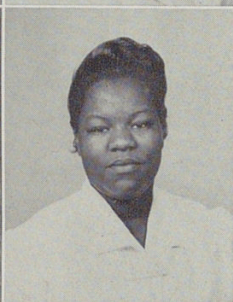
Glee Club; Spanish Club; Woodward Boosters.

"Charming and dependable. Very likable and studious. Many friends."

WOLF, MARY LOUISE

Co-op.

"The serious type — especially about her friend in the Service! True blue, that's Mary Lou."



WOMBOLD, ESTHER

Co-op.

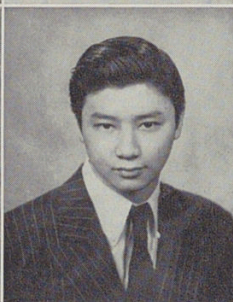
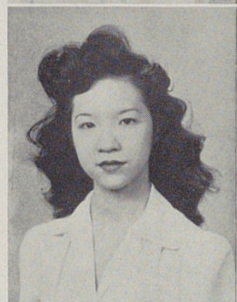
"A charming girl, who is doing a good job of keeping up the morale of the sailors. But it's her patriotic duty!"

*Mildred Wright*

WRIGHT, MILDRED

Choir.

"Golden soprano. Loves to sing. Nice and friendly, with an ever-ready, charming smile."



YEE, BLANCHE

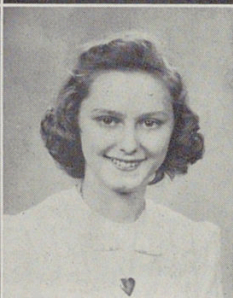
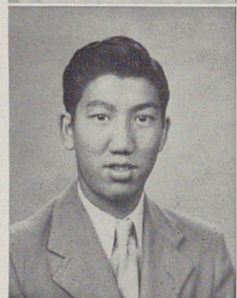
Latin Club; Girl Reserves; Physiology Club.

"Very ambitious—a good worker. A friend when needed — a true friend indeed."

YEE, RICHARD

Football; Basketball; Baseball; "W" Club.

"Quiet in class, but oh! outside. He gets around — but why not! He has what it takes—but definitely!"



YEE, WILLIAM P.

Football Manager; Track; Basketball; Co-ed Club.

"You can always depend on Yee. He was sort of short-changed at the beginning of the year but he came through. Wonder what he and Cooper had to talk about every morning!"

YETTER, SHIRLEY C.

G. A. A.; Rollicking Rollers; Woodward Boosters; American Problems Club.

"Everyone knows who Shirley loves! A lot of fellows are sorry about the whole thing, too. But she knows what she's doing."

*Seniors*

