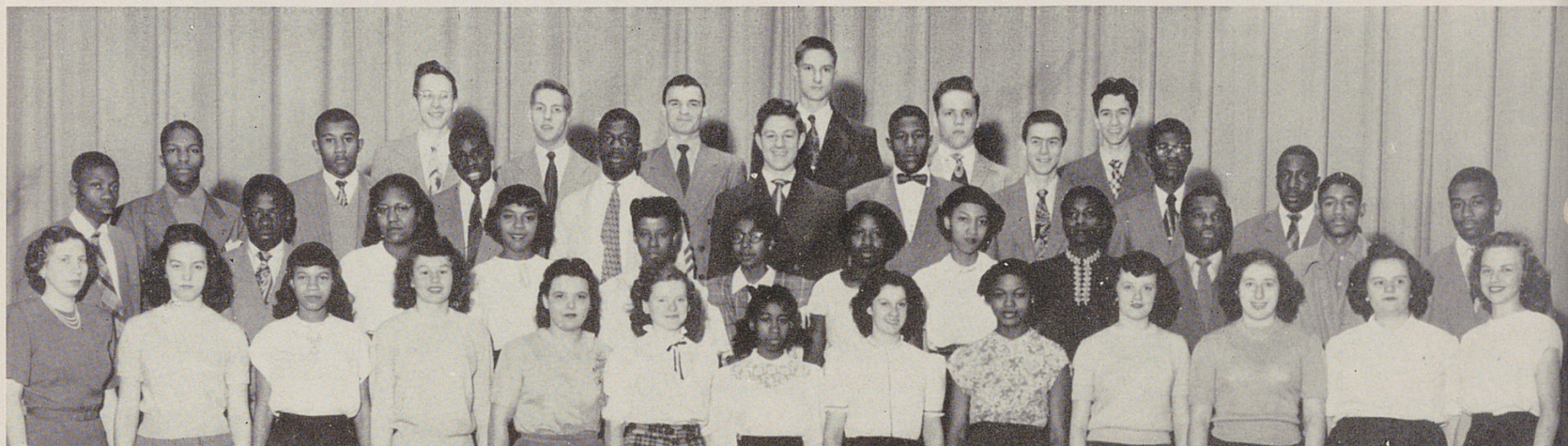
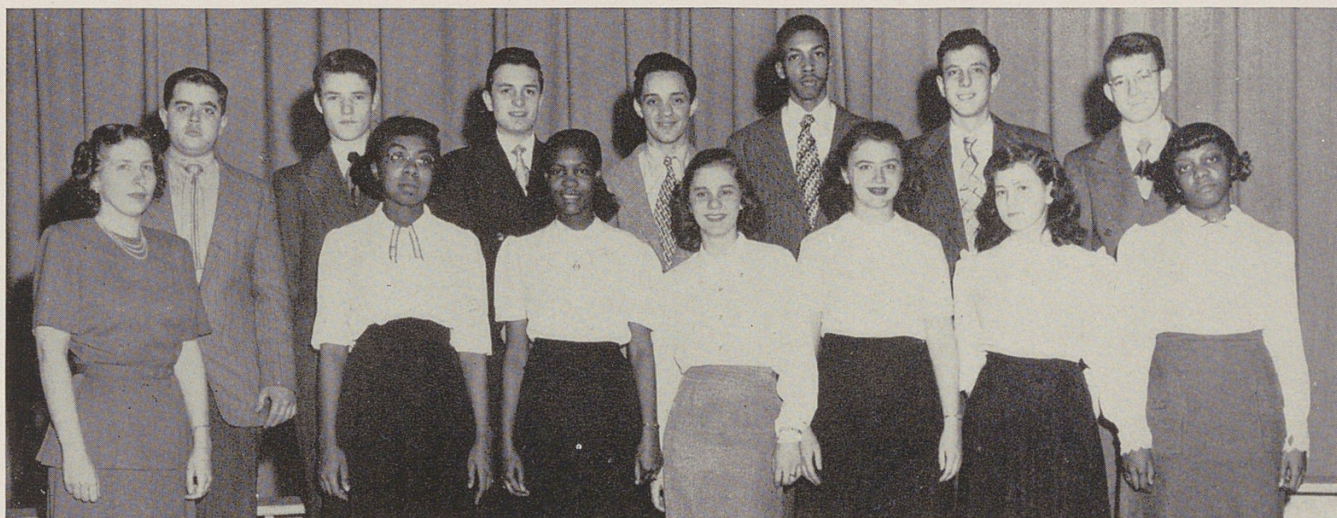


American Problems Club



ROW 1—Mrs. Huckaba, H. Earhart, E. Kilgore, J. Hurdle, M. Russo, O. Lux, D. Meatchem, P. Kalfas, C. McIntosh, D. Reed, M. Amrein, H. Earhart.
 ROW 2—J. Crowder, E. Long, J. Marshall, L. Manigan, A. Brown, J. Douglas, K. Fields, E. Amos, M. Lawson, W. Smith, J. Swan, L. Sloan.
 ROW 3—R. Crews, J. Black, E. Webb, R. Smith, K. Lentz, V. Canady, J. Greene, H. Williams, J. Allen.
 ROW 4—H. Schulz, G. McCarley, E. Rice, L. Ruther, M. Parker.



ROW 1—Mrs. Huckaba, R. Ahmed, M. Veasley, J. Gramke, P. Zucker, L. Hatfield, N. Durrett.
 ROW 2—F. Dauterman, E. Jordan, O. Frees, C. Miller, E. Britton, B. Beraha, C. Eastham.



ROW 1—J. Hamilton, D. Gardner, D. Robinson, A. Solomon, D. Hill, G. Blanks, E. Bedgood, R. Taylor, P. Tepe, E. Tuccinarde, H. Smith, P. Remer, A. Fenstermacher.
 ROW 2—L. Whitehead, R. Lefever, M. Rokich, D. Morgan, L. Cannon, B. Johnson, M. Harris, F. Quatromani.
 ROW 3—W. Burton, R. Muse, C. Gibson, A. Sharp, H. McCollum, Mrs. Huckaba, A. Alexander, O. Trammel, L. Daniels, D. Ligon, C. Mutters.