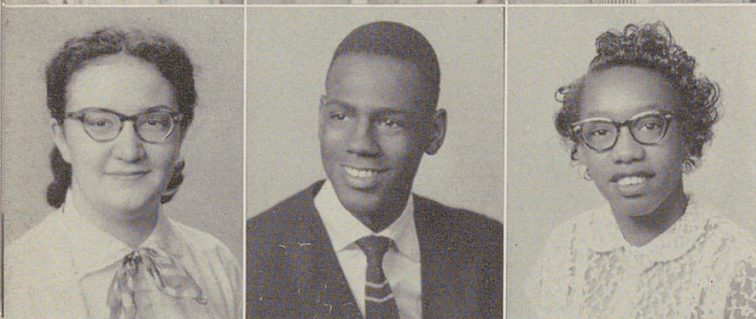


JOYCE PREWITT. Some lucky office will acquire a good worker and a pleasant companion in hiring Joyce.

OLDS PRINGLE. "Real gone" . . . one of the best bass drummers that Woodward has ever had.

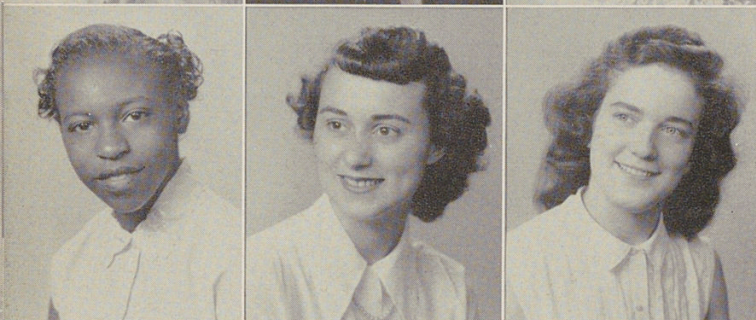
NATHANIEL PUGH. Has a friendly personality that will carry him far in whatever work he chooses.



JOAN RACE. She's fun to know, and useful besides . . . a whiz in Zoology . . . an accurate cashier in the lunchroom.

ROBERT RANDOLPH. A game of checkers, played scientifically, is what he likes best. What we like even better in his unfailing courtesy.

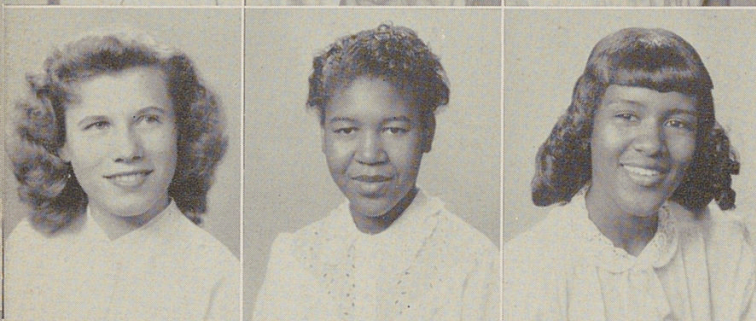
CARLSIE RAWLS. Packed with vitality, Carlsie is one of the girls we are always glad to see.



LOUISE REED. Alert, cheerful . . . always in the mood for activity of any kind.

JANET REESE. Pretty and capable. Janet bubbles over with enthusiasm for Stanley Home Products. An efficient girl.

LILLIAN RICHMOND. Besides being a lively companion, Lil makes a pretty picture with her blue eyes and sleek dark hair.



BARBARA RITCHIE. Will probably take on a secretarial job with the same enthusiasm she has for dancing and skating, and with the same success.

NORA ETTA ROBERTS. This girl really has rhythm. The band would have been lost without her this year.

PRUDENCE ROBERTS. Neat and popular . . . a girl with many ambitions, and with the energy and will to achieve them.



AMANDA ROUSSEAU. Well groomed, poised, and friendly . . . in short, a young lady of real quality.

HELEN RUEBUSCH. A lovely voice that will be missed from Woodward's choir.

BILL RUSSO. King Russo I will never forget English IV, and vice versa. Our favorite future pharmacist.



JACK SAMPLES. Man of the hour with the girls . . . Show business for him — we look ahead to seeing his name in lights.

BETTY SAYLOR. What every band needs — a red-headed majorette captain. Betty has a host of friends.

BETTY SELBY. A real exhibition of speed and grace on skates . . . always good company.



MILDRED SHANNON. A charming girl with an easy-going disposition. Accurate and responsible . . . she will make a good bookkeeper.

NORMA SHEARER. Her melodic soprano voice holds her listeners spellbound . . . and she looks as good as she sounds.

VIRGINIA SHEARER. Sincerity and willingness to assume responsibility make Ginny tops among the seniors.