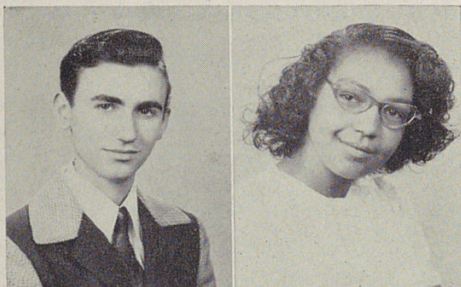


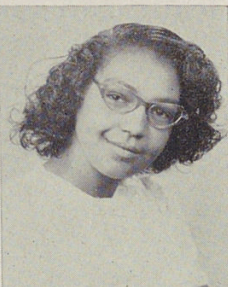
SENIORS



AMBROSE, NICK

French Club, American Problems.

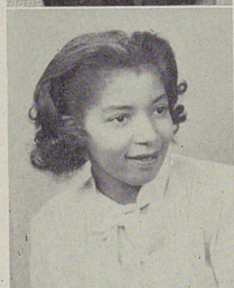
"A swell guy and a very studious fellow. Forms half of the corporation known as 'Hart and Ambrose'. Doesn't care for women, but there'll come a day!"



ANDERSON, ALICE

Physiology Club, Y-Teens, Glee Club.

"Alice has a keen sense of humor and is liked by all — especially the boys. She can tell good jokes, too. And how!"



ANDERSON, ELEANOR

Co-op, Shorthand Club, Y-Teens.

"A nice girl with gobs of personality. Well liked by all her friends. Always has a new fellow. How do you do it, Eleanor?"



ANDERSON, LILLIAN

G. A. A., Y-Teens, Choir.

"Active girl in sports. A willing worker and dependable. Has many friends. Quiet but friendly. That's a mighty sweet smile you have, Lillian."



ANDREWS, JESSIE

G. S. W., Choir, Tap Dancing, Y-Teens.

"A sweet and poised girl. Very popular with a certain boy. Where do you get those hair styles, Jessie?"



ATKINS, NORMA

Tap Dancing Club, Glee Club, Y-Teens.

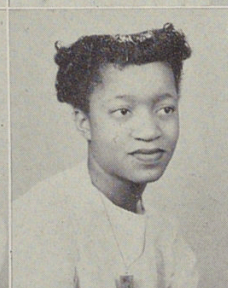
"Always pleasant and charming. Keeps up with the latest fashions. Talks all day about a certain boy. We don't blame you!"



AVERETT, GERTRUDE

Old Woodward Honor Club, G. S. W., Y-Teens, Choir.

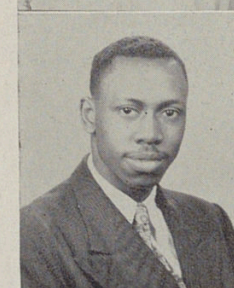
"A good student and a girl well liked by her classmates. Takes an active part in all her classes and does well in her studies."



BACHELOR, CATHERINE

Y-Teens.

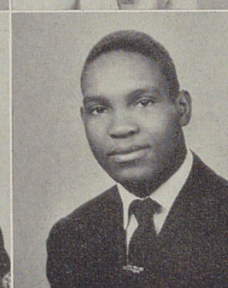
"Quiet but has a pleasing personality. Always willing to do her share of work. Hopes to be a 'Bachelor' in name only!"



BAILEY, JOHN

Choir, Visual Aids.

"Johnny seems to devote his whole time to school work and the more important things of life. Oh, but don't think we don't know about the little lady, John. Don't deny it!"



BAKER, GEORGE

"George is a very capable English student. He may even be a comedian one day for he seems to get laughs with the assistance of another friend in the study hall regardless of the situation. Keep trying, George!"